

Product datasheet for **MG204527**

C1galt1c1 (NM_021550) Mouse Tagged ORF Clone

Product data:

Product Type:	Expression Plasmids
Product Name:	C1galt1c1 (NM_021550) Mouse Tagged ORF Clone
Tag:	TurboGFP
Symbol:	C1galt1c1
Synonyms:	1500002I11Rik; AB030184; C1GalT2; C81205; Cosmc
Mammalian Cell Selection:	Neomycin
Vector:	pCMV6-AC-GFP (PS100010)
E. coli Selection:	Ampicillin (100 ug/mL)
ORF Nucleotide Sequence:	>MG204527 representing NM_021550 Red=Cloning site Blue=ORF Green=Tags(s)

TTTTGTAATACGACTCACTATAGGGCGGCCGGAATTCGTCGACTGGATCCGGTACCGAGGAGATCTGCC
GCC**CGATCGCC**

ATGCTTTCAGAAAGCAGTTCCTTTTTGAAGGGTGTGATGCTTGGAAAGCATCTTCTGTGCCTTGATCACTA
TGCTAGGCCACATTAGGATTGGAAACAGAATGCACCACCATGAGCATCACCATCTGCAAGCCCCTAACAA
AGACGATATCTCGAAAATTTAGAGGCTGAACGCATGGAGCTCAGTAAGAGTTCCGGGTACTGTATA
GTTCTTGTAACCCAAAGATGTGAGTCTTTGGGCTGCAGTGAAGGAGACTTGGACCAAACTGTGACA
AAGCAGAATTCTCAGTCTGAAAATGTTAAAGTGTGAGTCAATTAATATGGACACAAATGACATGTG
GTTGATGATGAGGAAAGCTTACAAATATGCTTATGATCAATACAGGGACCAATACTGGTTCTTCCTT
GCACGCCCCACTACTTTCGCTGTTATTGAAAACCTCAAATATTTTTGTTAAAAAAGGATCAATCCCAAC
CTTTCTATCTCGACACACTGTAATCTGGAGACCTTGAATATGTGAGTGTGGATGGAGGAATTGTCTT
AAGCATAGAATCAATGAAAAGACTCAACAGTCTTCTCAGTGTTCCTGAAAAGTGTCTGAAACAAGGAGGA
ATGATTTGGAAGATATCTGAAGATAAACAGCTGGCGGTCTGCCTGAAATACGCCGGAGTATTTGCAGAAA
ATGCCGAAGATGCCGATGGAAAAGATGTGTTAATACCAAATCCGTTGGCCTTTTCATTAAGAGGCAAT
GACTAACCAACCAACCAGGTAGTAGAAGGCTGTTGCTCTGATATGGCTGTTACTTTCAATGGACTGACT
CCTAATCAGATGCACGTGATGATGATGGGGTGTACCGGCTTAGGGCATTGGACATGTTTTCAATGATG
CATTGGTTTTCTTACCTCAAATGGTTCTGAGAATGAC

ACGCGTACGCGGCCGCTCGAG - GFP Tag - GTTTAA



[View online »](#)

Protein Sequence: >MG204527 representing NM_021550
 Red=Cloning site Green=Tags(s)

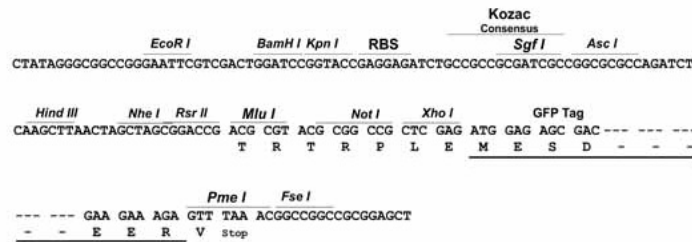
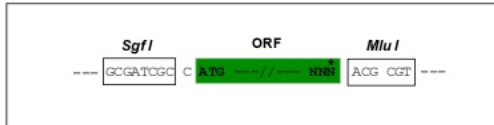
MLSESSSFLKGVMLGSIFCALITMLGHIRIGNRMHHEHHHLQAPNKDDISKISEAERMELSKSFRVYCI
 VLVKPKDVSLWAAVKETWTKHCDAEFFSSENVKVFESINMDTNDMWLMMRKAYKYAYDQYRDQYNWFFL
 ARPTTFAVIENLKYFLLKKDQSQPFYLGHTVKSGDLEYVSVDDGGIVLSIESMKRLNSLLSVPEKCPQGG
 MIWKISEDKQLAVCLKYAGVFAENAEDADGKDFVNTKSVGLFIKEAMTNQPNQVVEGCCSDMAVTFNGLT
 PNQMHVMMYGVYRLRAFGHVFNDAVFLPPNGSEND

TRTRPLE - GFP Tag - V

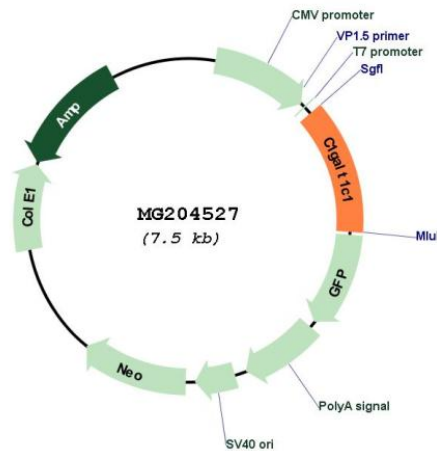
Restriction Sites: SgfI-MluI

Cloning Scheme:

Cloning sites used for ORF Shuttling:



Plasmid Map:



ACCN: NM_021550

ORF Size: 948 bp

OTI Disclaimer:	The molecular sequence of this clone aligns with the gene accession number as a point of reference only. However, individual transcript sequences of the same gene can differ through naturally occurring variations (e.g. polymorphisms), each with its own valid existence. This clone is substantially in agreement with the reference, but a complete review of all prevailing variants is recommended prior to use. More info
OTI Annotation:	This clone was engineered to express the complete ORF with an expression tag. Expression varies depending on the nature of the gene.
Components:	The ORF clone is ion-exchange column purified and shipped in a 2D barcoded Matrix tube containing 10ug of transfection-ready, dried plasmid DNA (reconstitute with 100 ul of water).
Reconstitution Method:	<ol style="list-style-type: none">1. Centrifuge at 5,000xg for 5min.2. Carefully open the tube and add 100ul of sterile water to dissolve the DNA.3. Close the tube and incubate for 10 minutes at room temperature.4. Briefly vortex the tube and then do a quick spin (less than 5000xg) to concentrate the liquid at the bottom.5. Store the suspended plasmid at -20°C. The DNA is stable for at least one year from date of shipping when stored at -20°C.
RefSeq:	NM_021550.3
RefSeq Size:	1481 bp
RefSeq ORF:	951 bp
Locus ID:	59048
UniProt ID:	Q9JMG2
Cytogenetics:	X A3.3
Gene Summary:	Probable chaperone required for the generation of 1 O-glycan Gal-beta1-3GalNAc-alpha1-Ser/Thr (T antigen), which is a precursor for many extended O-glycans in glycoproteins. Probably acts as a specific molecular chaperone assisting the folding/stability of core 1 beta-3-galactosyltransferase (C1GALT1) (By similarity).[UniProtKB/Swiss-Prot Function]