

## Product datasheet for **MG204505**

### **Tmem231 (NM\_001033321) Mouse Tagged ORF Clone**

#### Product data:

**Product Type:** Expression Plasmids  
**Product Name:** Tmem231 (NM\_001033321) Mouse Tagged ORF Clone  
**Tag:** TurboGFP  
**Symbol:** Tmem231  
**Synonyms:** 4932417I16Rik; Gm178  
**Mammalian Cell Selection:** Neomycin  
**Vector:** pCMV6-AC-GFP (PS100010)  
**E. coli Selection:** Ampicillin (100 ug/mL)  
**ORF Nucleotide Sequence:** >MG204505 representing NM\_001033321  
 Red=Cloning site Blue=ORF Green=Tags(s)

TTTTGTAATACGACTCACTATAGGGCGGCCGGAATTCGTCGACTGGATCCGGTACCGAGGAGATCTGCC  
 GCC**CGATCGCC**

ATGGCGCTGTACCATCTTCTCTCACCAATCGAGCGCGCTTACCGCGCGGGCTCTGCTCCAAGGCCG  
 CGCTCTTCTGCTGTTGACCACCGCGCTCACCTACATCCCCCGCTGCTGGTGGCCTCCGGAGCCACGG  
 GTTTGGCTGAAGCGGAGCAGCTACGAGGAGCAGCCGAACGTGCGCTCCAGCACCAAGTCTGCTCGTG  
 GCTCTCTGGGGCCGGAGCCTGAAGCCTCCTCGCCTGGAGCACGTTCCCCACCTCAACCGGCTGCAGG  
 GGGCTCACCTGCGCGTCCCGCTCGTGTCTGTCAGAGAAGAAGACCGGAACCAGGATGGAAAAATGGATGT  
 GCTGTACTTTAACTTGAACCTCCCTGCAACCCACAGAGCATGTCTCGGTGTGCAGCTAATCCTGACC  
 TTCTCCTACCAACTGCACAGGATGTCAACATTCGAGATGCAGAGCATGGCCTTTCTCCAGTCTCCTTTG  
 CTGTCCCTGGGTACAGTTATATGTGAATGGCGACCTGAGGCTGCAACAGAAGCAGCCACTGAGCTACCG  
 TGGCCTGGACATCAGATAACAAGTGTCCGTGATCAATGGGACAAGTCCTTTTGCCAGGACTACGACCTC  
 ACCCATTGTTGCCGCTATCAGGAAAGAAATGTTACCACTGTCCTCAGTGACCCCAACCCGATCTGGC  
 TGGTGGGAGAGCCGCTGAAGCTCCGTTTCGTGATCCATGCTGTATCCGCTATCCACGGAAGTCATTTT  
 TTACCAGCCAGGTTCTGGGAGATGATCAAGTTCGCCTGGATCCAGTATGTCAGCATCCTGCTGATCTTC  
 CTCTGGGTGTTTGAAGAATCAAATCTTCGTGTTTCAGAACCAAGTAGTGACCTCTATCCCTGTAGCCG  
 TGCCCCAGGGAGAGATACGGAAGAGCACTTATCC

**ACGCGT**ACGCGGCCGCTCGAG - GFP Tag - GTTTAA



[View online »](#)

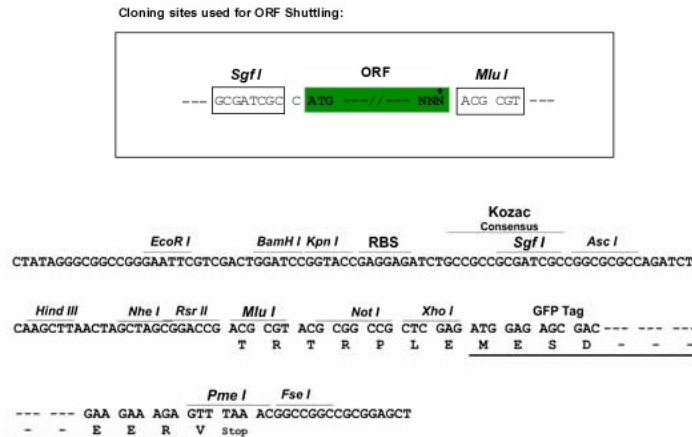
**Protein Sequence:** >MG204505 representing NM\_001033321  
 Red=Cloning site Green=Tags(s)

MALYHLFSHPIERAYRAGLCSKAALFLLLTTALTYIPPLLVAFRSHGFWLKRSSYEEQPNVRFQHQLLV  
 ALLGPEPEAFLAWSTFPTFNRLQGAHLRVPLVSSREEDRNQDGKMDVL YFKLELPLQPTHEVLGVQLILT  
 FSYQLHRMSTFEMQSMFLQSSFAVPGSQLYVNGDLRLQQKQPLSYRGLDIRYNVSVINGTSPFAQDYDL  
 THIVAAYQERNVTTVLSDPNPIWLVGRAAEAPFVIHAVIRYPTVEVSYQPGFWEMIKFAWIQYVSILLIF  
 LWVFERIKIFVFQNVVTSIPVAVPQGEIRKEHLS

TRTRPLE - GFP Tag - V

**Restriction Sites:** SgfI-MluI

**Cloning Scheme:**



**ACCN:** NM\_001033321

**ORF Size:** 945 bp

**OTI Disclaimer:** The molecular sequence of this clone aligns with the gene accession number as a point of reference only. However, individual transcript sequences of the same gene can differ through naturally occurring variations (e.g. polymorphisms), each with its own valid existence. This clone is substantially in agreement with the reference, but a complete review of all prevailing variants is recommended prior to use. [More info](#)

**OTI Annotation:** This clone was engineered to express the complete ORF with an expression tag. Expression varies depending on the nature of the gene.

**Components:** The ORF clone is ion-exchange column purified and shipped in a 2D barcoded Matrix tube containing 10ug of transfection-ready, dried plasmid DNA (reconstitute with 100 ul of water).

**Reconstitution Method:**

1. Centrifuge at 5,000xg for 5min.
2. Carefully open the tube and add 100ul of sterile water to dissolve the DNA.
3. Close the tube and incubate for 10 minutes at room temperature.
4. Briefly vortex the tube and then do a quick spin (less than 5000xg) to concentrate the liquid at the bottom.
5. Store the suspended plasmid at -20°C. The DNA is stable for at least one year from date of shipping when stored at -20°C.

**RefSeq:** [NM\\_001033321.2](#)

**RefSeq Size:** 2887 bp

**RefSeq ORF:** 948 bp

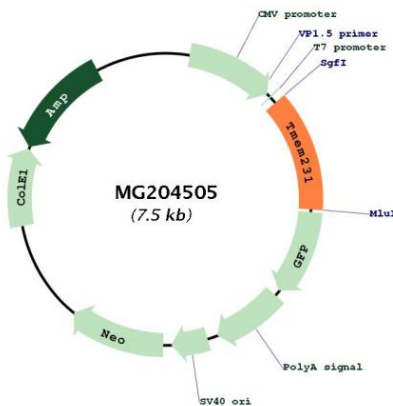
**Locus ID:** 234740

**UniProt ID:** [Q3U284](#)

**Cytogenetics:** 8 E1

**Gene Summary:** Transmembrane component of the tectonic-like complex, a complex localized at the transition zone of primary cilia and acting as a barrier that prevents diffusion of transmembrane proteins between the cilia and plasma membranes. Required for ciliogenesis and sonic hedgehog/SHH signaling.[UniProtKB/Swiss-Prot Function]

## Product images:



Circular map for MG204505