

Product datasheet for **MG204503**

Calu (BC051423) Mouse Tagged ORF Clone

Product data:

Product Type:	Expression Plasmids
Product Name:	Calu (BC051423) Mouse Tagged ORF Clone
Tag:	TurboGFP
Symbol:	Calu
Synonyms:	9530075H20Rik
Mammalian Cell Selection:	Neomycin
Vector:	pCMV6-AC-GFP (PS100010)
E. coli Selection:	Ampicillin (100 ug/mL)
ORF Nucleotide Sequence:	>MG204503 representing BC051423 Red=Cloning site Blue=ORF Green=Tags(s)

TTTTGTAATACGACTCACTATAGGGCGGCCGGAATTCGTCGACTGGATCCGGTACCGAGGAGATCTGCC
GCC**CGATCGCC**

ATGGACCTGCGTCAGTTTCTTATGTGCCTGTCCCTGTGCACAGCCTTTGCTTTGAGCAAGCCTACAGAAA
AGAAGGACCGAGTACACCATGAGCCTCAGCTCAGCGATAAAGTTCACAATGATGCTCAGAATTTTGACTA
TGACCATGATGCCTTCTGGGTGCAGAAGAGGCAAAGAGTTTTGATCAGCTGACACCAGAAGAGAGCAAG
GAAAGGCTTGAAAGATTGTAAGTAAAAATAGATGACGACAAGGATGGGTTTGTCACTGTGGATGAACTCA
AAGGCTGGATTAAGTTTGCACAAAAGCGCTGGATTCACGAGGATGTAGAGCGGCAATGGAAGGGCACGA
CCTCAATGAGGATGGCCTCGTTTTCTGGGAGGAGTATAAAAATGCCACCTACGGCTACGTTTTAGATGAT
CCAGATCCTGATGATGGATTTAATTATAAACAGATGATGGTCAGAGATGAGCGGAGGTTTAAAATGGCAG
ACAAGGATGGAGACCTAATTGCCACAAAGGAAGAGTTCACAGCTTTCCTGCACCCTGAGGAATATGACTA
CATGAAAGACATAGTCGTGCAGGAAACCATGGAGGATATAGACAAGAATGCTGATGGGTTTCATTGATCTA
GAGGAGTACATTTGGTGACATGTACAGTCACGATGGGAATGCTGATGAGCCAGAGTGGGTGAAGACAGAGC
GAGAACAGTTCGTGGAGTTTCGAGATAAGAACCAGGATGGGAAGATGGACAAGGAAGAGACCAAAGACTG
GATCCTCCCCTCAGACTATGACCATGCAGAGGCAGAAGCCAGGCATCTGGTCTATGAGTCAGACCAAAAC
AAGGATGGCAAGCTCACCAAGGAGGAGATTGTCGACAAGTATGATTTATTTGTGGCAGCCAGGCCACAG
ATTTCCGGGAGGCCTTAGTACGACATGATGAGTTC

ACGCGTACGCGGCCGCTCGAG - GFP Tag - GTTTAA



[View online »](#)

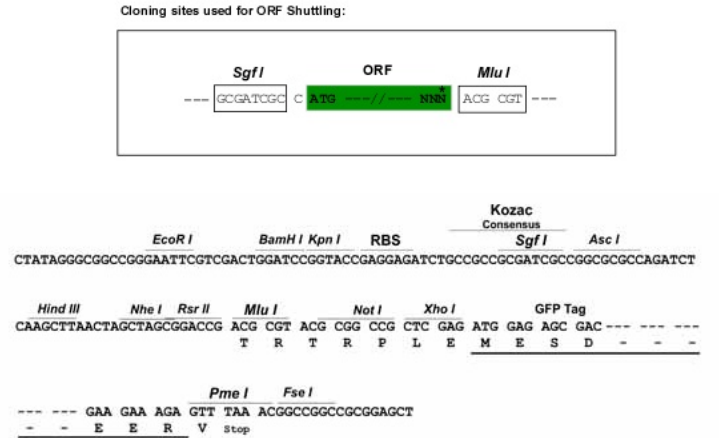
Protein Sequence: >MG204503 representing BC051423
Red=Cloning site Green=Tags(s)

MDLRQFLMCLSLCTAFALSKPTEKKDRVHHEPQLSDKVHND AQNFYDHD AFLGAE EAKSFDQLTP EESK
 ERLGKIVSKIDDDK DGFVTVD ELKGWIKFAQKRWIHEDVERQWKGHDLNEDGLVSWE EYKNATYGYVLD D
 PDPDDGFNYKQMMVRDERRFKMADKGD L IATKEEFT AFLHP E EYDYM KD I VVQETMEDIDKNADGFIDL
 EEYIGDMYSHDGN ADEPEWVKTEREQFVEFRDKNRD GKMDKEETKDWILPSDYDHAEAEARHLVYESDQN
 KDGKLTKEEIVDKYDLFVGSQATDFGEALVRHDEF

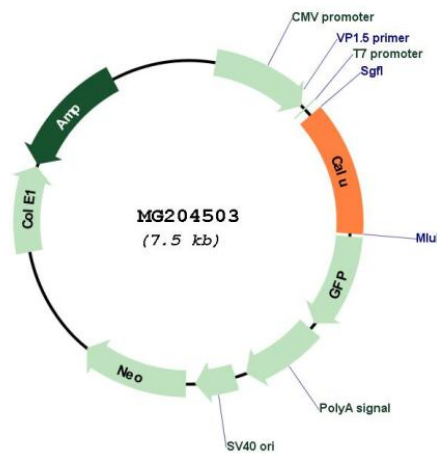
TRTRPLE - GFP Tag - V

Restriction Sites: SgfI-MluI

Cloning Scheme:



Plasmid Map:



ACCN: BC051423

ORF Size: 947 bp

OTI Disclaimer:	The molecular sequence of this clone aligns with the gene accession number as a point of reference only. However, individual transcript sequences of the same gene can differ through naturally occurring variations (e.g. polymorphisms), each with its own valid existence. This clone is substantially in agreement with the reference, but a complete review of all prevailing variants is recommended prior to use. More info
OTI Annotation:	This clone was engineered to express the complete ORF with an expression tag. Expression varies depending on the nature of the gene.
Components:	The ORF clone is ion-exchange column purified and shipped in a 2D barcoded Matrix tube containing 10ug of transfection-ready, dried plasmid DNA (reconstitute with 100 ul of water).
Reconstitution Method:	<ol style="list-style-type: none">1. Centrifuge at 5,000xg for 5min.2. Carefully open the tube and add 100ul of sterile water to dissolve the DNA.3. Close the tube and incubate for 10 minutes at room temperature.4. Briefly vortex the tube and then do a quick spin (less than 5000xg) to concentrate the liquid at the bottom.5. Store the suspended plasmid at -20°C. The DNA is stable for at least one year from date of shipping when stored at -20°C.
RefSeq:	BC051423 , AAH51423
RefSeq Size:	3309 bp
RefSeq ORF:	947 bp
Locus ID:	12321
Cytogenetics:	6 A3.3
Gene Summary:	Involved in regulation of vitamin K-dependent carboxylation of multiple N-terminal glutamate residues. Seems to inhibit gamma-carboxylase GGCX. Binds 7 calcium ions with a low affinity (By similarity).[UniProtKB/Swiss-Prot Function]