

Product datasheet for **MG204422**

Tpsg1 (NM_012034) Mouse Tagged ORF Clone

Product data:

Product Type: Expression Plasmids
Product Name: Tpsg1 (NM_012034) Mouse Tagged ORF Clone
Tag: TurboGFP
Symbol: Tpsg1
Synonyms: Prss31; Tmt
Mammalian Cell Selection: Neomycin
Vector: pCMV6-AC-GFP (PS100010)
E. coli Selection: Ampicillin (100 ug/mL)
ORF Nucleotide Sequence: >MG204422 representing NM_012034
 Red=Cloning site Blue=ORF Green=Tags(s)

TTTTGTAATACGACTCACTATAGGGCGGCCGGAATTCGTCGACTGGATCCGGTACCGAGGAGATCTGCC
 GCC**CGATCGCC**

ATGGCTCTGGGGCCAACTGTGGCATCCTACTGTTTCTGGCTGTTTCTGGGTGTGGCCATCCCCAGGTTT
 CAAACTCGGGAAGTCGAATCGTGGGAGGGCATGCTGCCCCAGCAGGCACATGGCCGTGGCAGGCTAGCCT
 CCGTCTGCACAAGGTGCACGTGTGTGGAGGCTCCCTGCTCAGTCCAGAATGGGTGCTCACAGCAGCCAC
 TGCTTCTCTGGGTCTGTGAACCTGTGATTATCAGGTGCACTTGGGAGAGCTTACGGTCACACTGTCTC
 CCCACTTCTCCACTGTAAAACGGATCATCATGTACACTGGCTCTCCAGGACCACCGGGTCCAGTGGGGA
 CATTGCCCTGGTGCAGCTGTCTCCCGGTGGCCCTTCCAGCCAGGTCCAGCCTGTGTGCCTCCCAGAG
 GCCTCAGCTGACTTCTACCCTGGGATGCAGTGTGGGTGACTGGCTGGGGCTATACAGGGGAGGGAGAGC
 CTCTGAAGCCCCATACAACCTTCAGGAGGCCAAAGTCTCTGTGGTGGATGTAAGACCTGCAGCCAGGC
 TTACAATAGTCCAATGGCAGCCTCATCCAGCCAGACATGCTATGCGCCCGGGCCCTGGGGATGCCTGC
 CAGGATGACTCTGGAGGGCCACTAGTCTGCCAGGTGGCTGGAACCTGGCAGCAGGCCGGCGTTGTGAGT
 GGGGTGAGGGCTGTGGCCGCCCTGACCGCCCTGGCGTCTATGCCCGGGTTACTGCCTATGTAACCTGGAT
 CCACCACCACATCCCGAAGCAGGGGGCTCAGGAATGCAAGGGCTTCCCTGGGCTCCTCTCTGGCTGCC
 CTCTTCTGGCCAAGCCTTCTCTGCTGGTCTCTGGAGTCTGATGGCCAAGTACTGGCTGAGCTCTC
 CCTCCCACGGCCCTCGGAATC

ACGCGTACGCGGCCGCTCGAG - GFP Tag - GTTTAA



[View online »](#)

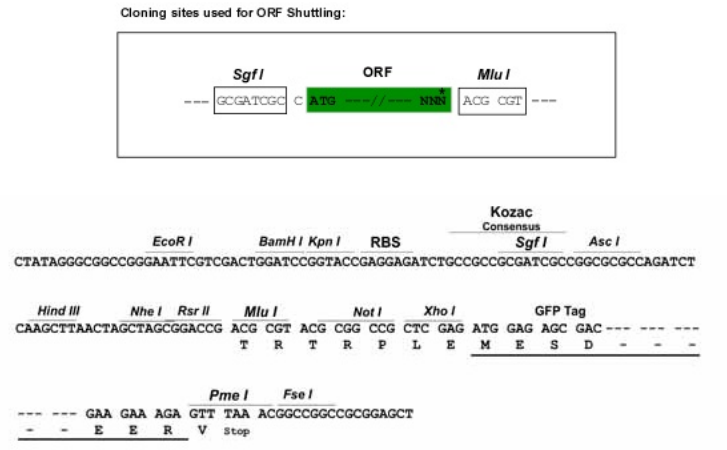
Protein Sequence: >MG204422 representing NM_012034
Red=Cloning site Green=Tags(s)

MALGPNCGILLFLAVSGCGHPQVSNVSGSRIVGGHAAPAGTWPWQASLRHLHKVHVCGGSLLSPEWVLTAAH
 CFSGSVNSDDYQVHLGELTVTLSPHFSTVKRIIMYTGSPGPPGSSGDIALVQLSSPVALSSQVQPCLPE
 ASADFYPMQCVWTGWGTYGEGEPLKPPYNLQEAKVSVVDVKTCQAYNSPNGSLIQDMLCARGPGDAC
 QDDSGGPLVCQVAGTWQQAGVVSWGEGCGRPDRPGVYARVTAAYVNWIIHHHIPEAGGSGMQGLPWAPLLAA
 LFWPSLFLLLVSGLMAKYWLSSPSHAASEL

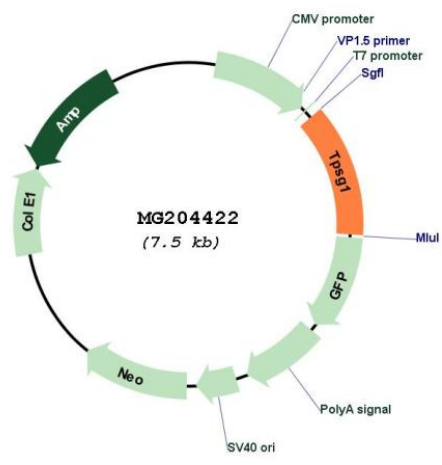
TRTRPLE - GFP Tag - V

Restriction Sites: SgfI-MluI

Cloning Scheme:



Plasmid Map:



ACCN: NM_012034
ORF Size: 933 bp

OTI Disclaimer:	The molecular sequence of this clone aligns with the gene accession number as a point of reference only. However, individual transcript sequences of the same gene can differ through naturally occurring variations (e.g. polymorphisms), each with its own valid existence. This clone is substantially in agreement with the reference, but a complete review of all prevailing variants is recommended prior to use. More info
OTI Annotation:	This clone was engineered to express the complete ORF with an expression tag. Expression varies depending on the nature of the gene.
Components:	The ORF clone is ion-exchange column purified and shipped in a 2D barcoded Matrix tube containing 10ug of transfection-ready, dried plasmid DNA (reconstitute with 100 ul of water).
Reconstitution Method:	<ol style="list-style-type: none">1. Centrifuge at 5,000xg for 5min.2. Carefully open the tube and add 100ul of sterile water to dissolve the DNA.3. Close the tube and incubate for 10 minutes at room temperature.4. Briefly vortex the tube and then do a quick spin (less than 5000xg) to concentrate the liquid at the bottom.5. Store the suspended plasmid at -20°C. The DNA is stable for at least one year from date of shipping when stored at -20°C.
RefSeq:	NM_012034.2 , NP_036164.1
RefSeq Size:	1202 bp
RefSeq ORF:	936 bp
Locus ID:	26945
Cytogenetics:	17 12.53 cM