

Product datasheet for **MG204388**

Ucp2 (NM_011671) Mouse Tagged ORF Clone

Product data:

Product Type:	Expression Plasmids
Product Name:	Ucp2 (NM_011671) Mouse Tagged ORF Clone
Tag:	TurboGFP
Symbol:	Ucp2
Synonyms:	Slc25a8; UCP 2; UCPH
Mammalian Cell Selection:	Neomycin
Vector:	pCMV6-AC-GFP (PS100010)
E. coli Selection:	Ampicillin (100 ug/mL)
ORF Nucleotide Sequence:	>MG204388 representing NM_011671 Red=Cloning site Blue=ORF Green=Tags(s)

TTTTGTAATACGACTCACTATAGGGCGCCGGGAATTCGTCGACTGGATCCGGTACCGAGGAGATCTGCC
GCC**CGATCGCC**

ATGGTTGGTTTCAAGGCCACAGATGTGCCCCCAACAGCCACTGTGAAGTTCAGGGGGCTGGGACAGCTG
CCTGCATTGCAGATCTCATCACTTTCCCTCTGGATACCGCCAAGTCCGGCTGCAGATCCAAGGGGAGAG
TCAAGGGCTAGTGCACCGCAGCCAGCGCCAGTACCGTGGCGTTCTGGGTACCATCTAACCATGGTG
CGCACTGAGGGTCCACGCAGCCTCTACAATGGGCTGGTCGCCGGCCTGCAGCGCCAGATGAGCTTTGCCT
CCGTCCGCATTGGCCTCTACGACTCTGTCAAACAGTTCTACACCAAGGGCTCAGAGCATGCAGGCATCGG
GAGCCGCCTCCTGGCAGGTAGCACCACAGGTGCCCTGGCCGTGGCTGTAGCCAGCCTACAGATGTGGTA
AAGGTCGGCTTCCAGGCTCAGGCCCGGGCTGGTGGTGGTCGGAGATACCAGAGCACTGTGCAAGCCTACA
AGACCATTGCACGAGAGGAAGGGATCCGGGGCCTCTGAAAGGGACTTCTCCCAATGTTGCCCGTAATGC
CATTGTCAACTGTGCTGAGCTGGTGACCTATGACCTCATCAAAGATACTCTCCTGAAAGCCAACCTCATG
ACAGATGACCTCCCTTGCCACTTCACTTCTGCCTTCGGGGCCGGCTTCTGCACCACCGTCATCGCCTCCC
CTGTTGATGTGGTCAAGACGAGATACATGAACTCTGCCTTGGGCCAGTACCACAGCGCAGGTCACGTGTC
CCTTACCATGCTCCGGAAGGAGGGACCCCGCCCTTCTACAAGGGGTTTCATGCCTTCTTCTCCGCTTG
GGATCCTGGAACGTAGTGATGTTGTACCTATGAGCAGCTCAAAGAGCCCTAATGGCTGCCTACCAAT
CTCGGGAGGCACCTTTC

ACGCGTACGCGGCCGCTCGAG - GFP Tag - GTTTAA



[View online »](#)

Protein Sequence: >MG204388 representing NM_011671
Red=Cloning site Green=Tags(s)

MVGFKATDVPPTATVKFQGAGTAACIADLITFPLDTAKVRLQIQGESQGLVRTAASAQYRGVLGTILTMV
 RTEGPRSLYNGLVAGLQRQMSFASVRIGLYDSVKQFYTKGSEHAGIGSRLLAGSTTGALAVAVAQPTDVV
 KVRFQAQARAGGRRYQSTVEAYKTIAREEGIRGLWKGTSPNVARNAIVNCAELVTYDLIKDTLLKANLM
 TDDLPCHFTSAFGAGFCTTVIASPVDVVKTRYMNSALGQYHSAGHCALTMLRKEGPRAFVKGFMPFSLRL
 GSWNVVMFVTYEQLKRALMAAYQSREAPF

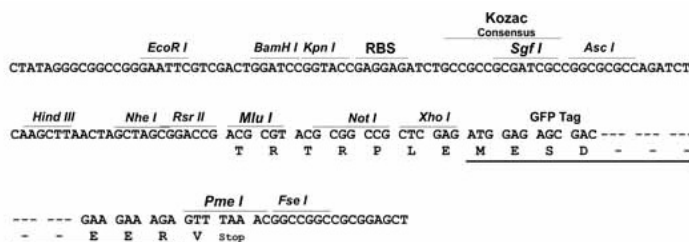
TRTRPLE - GFP Tag - V

Chromatograms: https://cdn.origene.com/chromatograms/ja3362_e08.zip

Restriction Sites: SgfI-MluI

Cloning Scheme:

Cloning sites used for ORF Shuttling:



ACCN: NM_011671

ORF Size: 927 bp

OTI Disclaimer: The molecular sequence of this clone aligns with the gene accession number as a point of reference only. However, individual transcript sequences of the same gene can differ through naturally occurring variations (e.g. polymorphisms), each with its own valid existence. This clone is substantially in agreement with the reference, but a complete review of all prevailing variants is recommended prior to use. [More info](#)

OTI Annotation: This clone was engineered to express the complete ORF with an expression tag. Expression varies depending on the nature of the gene.

Components: The ORF clone is ion-exchange column purified and shipped in a 2D barcoded Matrix tube containing 10ug of transfection-ready, dried plasmid DNA (reconstitute with 100 ul of water).

Reconstitution Method:

1. Centrifuge at 5,000xg for 5min.
2. Carefully open the tube and add 100ul of sterile water to dissolve the DNA.
3. Close the tube and incubate for 10 minutes at room temperature.
4. Briefly vortex the tube and then do a quick spin (less than 5000xg) to concentrate the liquid at the bottom.
5. Store the suspended plasmid at -20°C. The DNA is stable for at least one year from date of shipping when stored at -20°C.

RefSeq: [NM_011671.3](#)

RefSeq Size: 1583 bp

RefSeq ORF: 930 bp

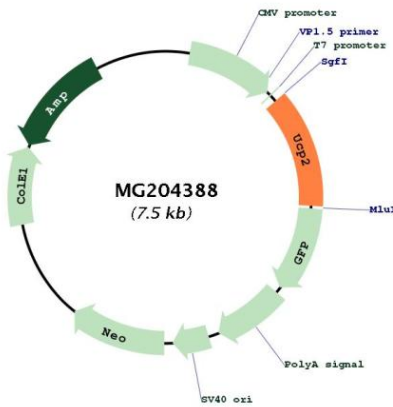
Locus ID: 22228

UniProt ID: [P70406](#)

Cytogenetics: 7 54.36 cM

Gene Summary: UCP are mitochondrial transporter proteins that create proton leaks across the inner mitochondrial membrane, thus uncoupling oxidative phosphorylation from ATP synthesis. As a result, energy is dissipated in the form of heat (By similarity).[UniProtKB/Swiss-Prot Function]

Product images:



Circular map for MG204388