

Product datasheet for **MG204365**

Zdhhc7 (BC075666) Mouse Tagged ORF Clone

Product data:

Product Type:	Expression Plasmids
Product Name:	Zdhhc7 (BC075666) Mouse Tagged ORF Clone
Tag:	TurboGFP
Symbol:	Zdhhc7
Synonyms:	AL024087; Gramp2
Mammalian Cell Selection:	Neomycin
Vector:	pCMV6-AC-GFP (PS100010)
E. coli Selection:	Ampicillin (100 ug/mL)
ORF Nucleotide Sequence:	>MG204365 representing BC075666 Red=Cloning site Blue=ORF Green=Tags(s)

TTTTGTAATACGACTCACTATAGGGCGGCCGGAATTCGTCGACTGGATCCGGTACCGAGGAGATCTGCC
GCC**CGATCGCC**

ATGCAGCCGTCGGGACACAGGCTCCGGGACATCGAGCACCATCCTCTCCTGACTGACAATGACAATTACG
ACTCAGCATCCTTTCGTCCTCCGAGACTGACATGGCAGACAGGGTGTGGTTCATCCGAGATGGCTGTGG
CATGGTCTGTGCTGTCATGACGTGGCTTCTCGTCGTCTATGCAGACTTCGTGGTACCTTTGTCTGCTG
CTGCCTCCAAAGACTTCTGGTACTCCGTGGTGAACGGAGTCCTTCAACTGCTTGGCGGTGCTCGCGC
TGTCTCCACCTGAGAACCATGCTCACTGACCCGGGTGCTGTCCCAAAGGCAACGCCACGAAGGAGTA
CATGGAGAGCTTGCAGCTGAAGCCAGGCGAGGTGATCTACAAGTGCCCAAGTGTGCTGCATCAAGCCG
GAACGTGCCACCACTGCAGTATTTGCAAGAGATGCATTGCAAGATGGACCATCACTGCCCGTGGGTGA
ACAACGCGTCGGGGAGAAGAATCAGAGGTTCTTCGTGCTTTTACCATGTACATAGCTCTGTCTTCGGT
TCATGCTCTGATTCTCTGTGGGCTTCAGTTCATCTCCTGCGTCCGAGGGCAGTGGACAGAGTGCAGCGAC
TTCTCTCTCCATAACTGTAATCCTGTTGGTCTTCTGTGCCTTGAGGGCTCCTGTTCTTACCTTCA
CCGAGTCATGTTCCGCACCCAGATCCACTCGATATGCAATGATGAAACAGAGATCGAGAGGCTGAAGAG
CGAGAAGCCACGTGGGAGCGCAGGCTGCGGTGGGAAGGAATGAAGTCTGTCTTCGGGGGCCCTCCCTCC
CTCCTCTGGATGAACCCCTTCGTTGGCTCCGACTCAGGCGGCTGCAGATGAGGACCAGGAAAGGAGGCC
CCGAGTTCTCTGTC

ACGCGTACGCGGCCGCTCGAG - GFP Tag - GTTTAA



[View online »](#)

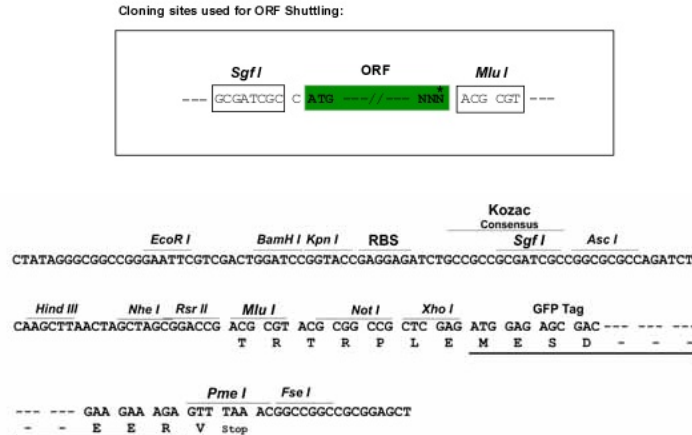
Protein Sequence: >MG204365 representing BC075666
Red=Cloning site Green=Tags(s)

MQPSGHLRLDIEHHPLLTDNDNYDSASSSSSETDMADRVWFIRDGCGMCAVMTWLLVYADFVVTFMVL
 LPSKDFWYSVNVGVLFNCLAVLALSSHLRTMLTDPGAVPKGNATKEYMESLQLKPGEVIYKPKCCCIKP
 ERAHHCISICKRCIRKMDHHCWPVWNNVCVGEKNQRFFVLFTMYIALSSVHALILCGLQFISCVRGQWTECSD
 FSPPITVILLVFLCLEGLLFFFTAVMFGTQIHSICNDETEIERLKSEKPTWERRLRWEGMKSVMFGGPPS
 LLWMNPFVGFRLRRLQMRTRKGGPEFSV

TRTRPLE - GFP Tag - V

Restriction Sites: SgfI-MluI

Cloning Scheme:



ACCN: BC075666

ORF Size: 926 bp

OTI Disclaimer: The molecular sequence of this clone aligns with the gene accession number as a point of reference only. However, individual transcript sequences of the same gene can differ through naturally occurring variations (e.g. polymorphisms), each with its own valid existence. This clone is substantially in agreement with the reference, but a complete review of all prevailing variants is recommended prior to use. [More info](#)

OTI Annotation: This clone was engineered to express the complete ORF with an expression tag. Expression varies depending on the nature of the gene.

Components: The ORF clone is ion-exchange column purified and shipped in a 2D barcoded Matrix tube containing 10ug of transfection-ready, dried plasmid DNA (reconstitute with 100 ul of water).

Reconstitution Method:

1. Centrifuge at 5,000xg for 5min.
2. Carefully open the tube and add 100ul of sterile water to dissolve the DNA.
3. Close the tube and incubate for 10 minutes at room temperature.
4. Briefly vortex the tube and then do a quick spin (less than 5000xg) to concentrate the liquid at the bottom.
5. Store the suspended plasmid at -20°C. The DNA is stable for at least one year from date of shipping when stored at -20°C.

RefSeq: [BC075666](#), [AAH75666](#)

RefSeq Size: 2874 bp

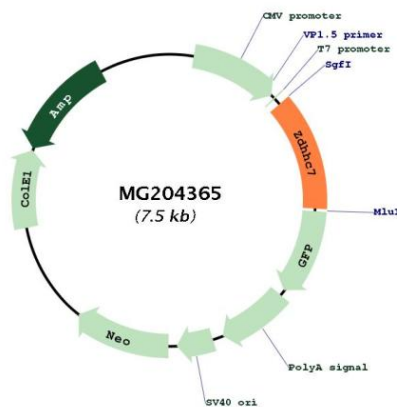
RefSeq ORF: 926 bp

Locus ID: 102193

Cytogenetics: 8 E1

Gene Summary: Palmitoyltransferase with broad specificity (PubMed:15603741, PubMed:25253725). Palmitoylates JAM3 (By similarity). Palmitoylates SNAP25 and DLG4/PSD95 (PubMed:15603741, PubMed:25253725). Palmitoylates sex steroid hormone receptors, including ESR1, PGR and AR, thereby regulating their targeting to the plasma membrane and their function in rapid intracellular signaling upon binding of sex hormones (By similarity). May play a role in follicle stimulation hormone (FSH) activation of testicular Sertoli cells (By similarity).[UniProtKB/Swiss-Prot Function]

Product images:



Circular map for MG204365