

Product datasheet for **MG204364**

Syp (NM_009305) Mouse Tagged ORF Clone

Product data:

Product Type:	Expression Plasmids
Product Name:	Syp (NM_009305) Mouse Tagged ORF Clone
Tag:	TurboGFP
Symbol:	Syp
Synonyms:	A230093K24Rik; AI848995; p38; Syn
Mammalian Cell Selection:	Neomycin
Vector:	pCMV6-AC-GFP (PS100010)
E. coli Selection:	Ampicillin (100 ug/mL)
ORF Nucleotide Sequence:	>MG204364 representing NM_009305 Red=Cloning site Blue=ORF Green=Tags(s)

TTTTGTAATACGACTCACTATAGGGCGGCCGGAATTCGTCGACTGGATCCGGTACCGAGGAGATCTGCC
GCC**CGATCGCC**

ATGCTGCTGCTGGCAGACATGGACGTGGTGAATCAGCTGGTGGCTGGGGTCAGTCCGGGTGGTCAAGG
AGCCCCTTGGCTTCGTGAAGGTGCTGCAGTGGTCTTTGCCATCTTCGCCTTTGCTACGTGCGGCAGCTA
CACCGGAGAGCTTCGGCTGAGCGTGGAGTGTGCCAACAAGACGGAGAGTGCCTCAACATCGAAGTCGAA
TTTGAGTACCCATTCAGGCTGCACCAAGTGTACTTTGATGCACCCTCCTGCGTTAAAGGGGGCACTACCA
AGATCTTCTAGTTGGTACTACTCCTCCTCGGCTGAATTCCTTTGTCACCGTGGCTGTGTTGCCTTCCT
CTACTCCATGGGGCCCTGGCCACCTACATCTTCTGCAGAACAAGTACCGAGAGAAACAACAAGGGCCA
ATGATGGACTTCCCTGGCCACAGCAGTGTTCGCTTTCATGTGGCTAGTTAGCTCATCCGCCTGGGCCAAAG
GCCTGTCCGATGTGAAGATGGCCACTGACCCAGAGAACATTATCAAGGAGATGCCTATGTGCCGCCAGAC
AGGAAACACATGCAAGGAACTGAGGGACCTGTGACTTCAGGACTCAACACCTCGGTGGTGTGGCTTC
CTGAACCTGGTGTCTGGGTTGGCAACCTATGGTTCGTGTTCAAGGAGACAGGCTGGGCCGCCCAATTCA
TGCGCGCACCTCCAGGCGCCCCAGAAAAGCAACCAGCTCCTGGCGATGCCTACGGCGATGCGGGCTATGG
GCAGGGCCCCGGAGGCTATGGGCCCCAGGACTCCTACGGGCCTCAGGGTGGTTATCAACCCGATTACGGG
CAGCCAGCCAGCGCGGTGGCGTGGCTACGGGCCTCAGGGCGACTATGGGCAGCAAGGCTACGGCCAAC
AGGGTGGCCACCTCCTTCTCCAATCAGATG

ACGCGTACGCGGCCGCTCGAG - GFP Tag - GTTTAA



[View online »](#)

Protein Sequence: >MG204364 representing NM_009305
 Red=Cloning site Green=Tags(s)

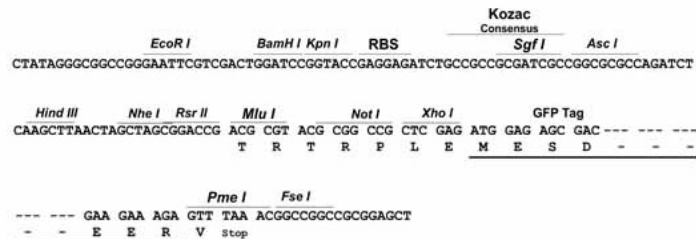
MLLLADMDVNVNQLVAGGQFRVVKPELGFVKVLQWVFAIFAFATCGSYTGELRLSVECANOTESALNIEVE
 FEYPFRLHQVYFDAPSCVKGGTTKIFLVGDYSSSAEFFVTAVFAFLYSMGALATYIFLQNKYRENNKGP
 MMDFLATAVFAFMWLVSSSAWAKGLSDVKMATDPENIIKEMPMCRQTGNTCKELRDPVTSGLNLSVVFGE
 LNLVLWVGNLWVFKETGWAAPFMRAPPGAPEKQFAPGDAYGDAGYGGQGGYGPQDSYGPQGGYQPDYG
 QPASGGGGYGPQGDYGGQYGGQGGAPTSFSNQM

TRTRPLE - GFP Tag - V

Restriction Sites: SgfI-MluI

Cloning Scheme:

Cloning sites used for ORF Shuttling:



ACCN: NM_009305

ORF Size: 942 bp

OTI Disclaimer: The molecular sequence of this clone aligns with the gene accession number as a point of reference only. However, individual transcript sequences of the same gene can differ through naturally occurring variations (e.g. polymorphisms), each with its own valid existence. This clone is substantially in agreement with the reference, but a complete review of all prevailing variants is recommended prior to use. [More info](#)

OTI Annotation: This clone was engineered to express the complete ORF with an expression tag. Expression varies depending on the nature of the gene.

Components: The ORF clone is ion-exchange column purified and shipped in a 2D barcoded Matrix tube containing 10ug of transfection-ready, dried plasmid DNA (reconstitute with 100 ul of water).

Reconstitution Method:

1. Centrifuge at 5,000xg for 5min.
2. Carefully open the tube and add 100ul of sterile water to dissolve the DNA.
3. Close the tube and incubate for 10 minutes at room temperature.
4. Briefly vortex the tube and then do a quick spin (less than 5000xg) to concentrate the liquid at the bottom.
5. Store the suspended plasmid at -20°C. The DNA is stable for at least one year from date of shipping when stored at -20°C.

RefSeq: [NM_009305.2](#), [NP_033331.2](#)

RefSeq Size: 2482 bp

RefSeq ORF: 945 bp

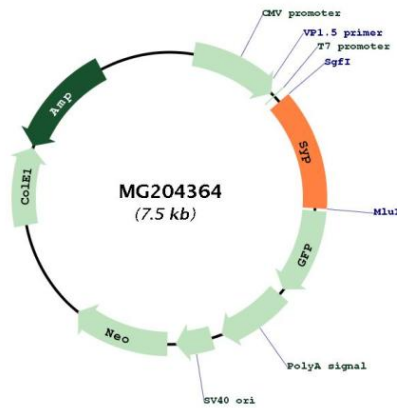
Locus ID: 20977

UniProt ID: [Q62277](#)

Cytogenetics: X 3.44 cM

Gene Summary: Possibly involved in structural functions as organizing other membrane components or in targeting the vesicles to the plasma membrane (By similarity). Involved in the regulation of short-term and long-term synaptic plasticity.[UniProtKB/Swiss-Prot Function]

Product images:



Circular map for MG204364