

## Product datasheet for **MG204359**

### Tomm40l (NM\_001037170) Mouse Tagged ORF Clone

#### Product data:

Product Type:	Expression Plasmids
Product Name:	Tomm40l (NM_001037170) Mouse Tagged ORF Clone
Tag:	TurboGFP
Symbol:	Tomm40l
Mammalian Cell Selection:	Neomycin
Vector:	pCMV6-AC-GFP (PS100010)
E. coli Selection:	Ampicillin (100 ug/mL)
ORF Nucleotide Sequence:	>MG204359 representing NM_001037170 Red=Cloning site Blue=ORF Green=Tags(s)

TTTTGTAATACGACTCACTATAGGGCGGCCGGAATTCGTCGACTGGATCCGGTACCGAGGAGATCTGCC  
GCC**CGATCGCC**

ATGGGGAACACCCTGGGCTGGCACCGATGGGTACTTTACCCCGCCGGAGCCACCCTCGAGAGGAACCGC  
TGCCCAACCCCGGGAGCTTCGACGAGCTGCACCGTTGTGCAAAGATGTATCCAGCACAGATGGAAGG  
CGTGAAGCTGGTTGTCAACAAGTTCTGAGCAGCCATTTCCAGGTGGCTCATACTGTGCACATGAGTGCC  
CTGGGCTTGCCAGGGTACCACCTCCATACCGCCTATGCAGGGGACTGGCAGCTTAGCCCCACAGAGGTGT  
TCCCACCTGTGGTGGGGATATGGACAGCAGTGGCAGTCTCAACGCCAGGTCTTGCTTCTGTTGGCAGA  
ACGGCTGCGAGCTAAGGCTGTCTTCCAGACACAGCAGGCCAAGTTCCTGACATGGCAGTTTGATGGCGAG  
TATCGGGGAGATGACTACACAGCCACTCTGACCTGGGAAATCCGGATCTGATTGGGGAATCAGTGATCA  
TGGTTGCTCACTTCTGCAGAGCATCACCCATCGGCTTGTGCTAGGAGGAGAGCTAGTTTATCACCGCGC  
GCCAGGAGAAGAGGGGGCCATCTTGACTCTGGCTGGGAAGTACTCAGCTGTCCACTGGGTAGCTACGTTG  
AATGTTGGGTGAGTGGGGCCATGCAAGTTATTACCACAAGGCCAATGAACAGGTTTCAAGTTGGAGTAG  
AGTTTGGGCAAATAACAAGGCTACAAGATACGACCTTCTCCTTTGGTTACCACCTGACTCTGCCACGGC  
CGATATGGTGTAGAGGCTTGGTGGACAGTAACTGGTGTGGTGGTGGTGGTGGTGGTGGTGGTGGTGGT  
CCCCTGCCTGTACCCTAGCCCTGGAGCCTTCTCAATCACTGGCGAAACAGATTCCATTGCGGCTTCA  
GCATCACTGTGGGC

**ACGCGT**ACGCGGCCGCTCGAG - GFP Tag - GTTTAA



[View online »](#)

**Protein Sequence:** >MG204359 representing NM\_001037170  
 Red=Cloning site Green=Tags(s)

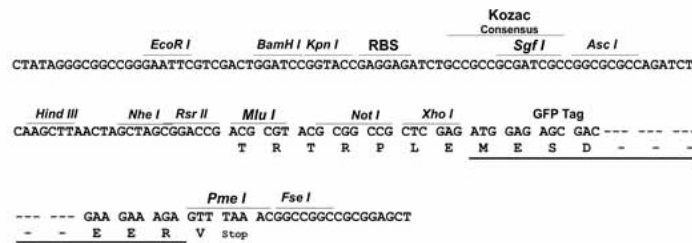
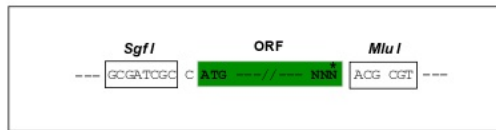
MGNTLGLAPMGTLPRRSHRREEPLPNPGSFDELHRLCKDVFP AQMEGVKLVVNKVLSSHFQVAHTVHMSA  
 LGLPGYHLHTAYAGDWQLSPTEVFPTVVGDMDSGSLNAQVLLLLAERLRAKAVFQTQQAKFLTWFQFDGE  
 YRGDDYTATLTLGNPDLIGESVIMVAHFLQSITHRLVLGGELVYHRRPGEEGAILTLAGKYSAVHWVATL  
 NVGSGGAHASYHKANEQVQVGVFEANTRLQDTTFSGYHLTLPQADMVFRGLVDSNWCVGAVLEKKMR  
 PLPVTLALGAFLNHWNRFRHCGFSITVG

TRTRPLE - GFP Tag - V

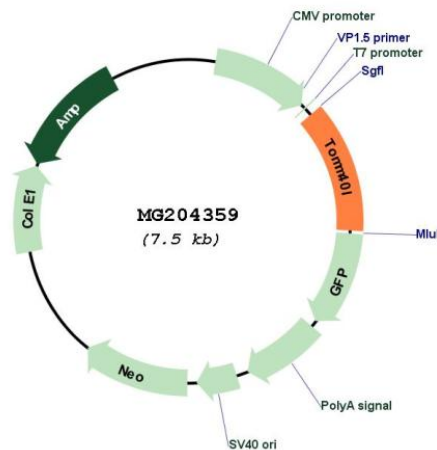
**Restriction Sites:** SgfI-MluI

**Cloning Scheme:**

Cloning sites used for ORF Shutting:



**Plasmid Map:**



**ACCN:** NM\_001037170

**ORF Size:** 924 bp

<b>OTI Disclaimer:</b>	The molecular sequence of this clone aligns with the gene accession number as a point of reference only. However, individual transcript sequences of the same gene can differ through naturally occurring variations (e.g. polymorphisms), each with its own valid existence. This clone is substantially in agreement with the reference, but a complete review of all prevailing variants is recommended prior to use. <a href="#">More info</a>
<b>OTI Annotation:</b>	This clone was engineered to express the complete ORF with an expression tag. Expression varies depending on the nature of the gene.
<b>Components:</b>	The ORF clone is ion-exchange column purified and shipped in a 2D barcoded Matrix tube containing 10ug of transfection-ready, dried plasmid DNA (reconstitute with 100 ul of water).
<b>Reconstitution Method:</b>	<ol style="list-style-type: none"><li>1. Centrifuge at 5,000xg for 5min.</li><li>2. Carefully open the tube and add 100ul of sterile water to dissolve the DNA.</li><li>3. Close the tube and incubate for 10 minutes at room temperature.</li><li>4. Briefly vortex the tube and then do a quick spin (less than 5000xg) to concentrate the liquid at the bottom.</li><li>5. Store the suspended plasmid at -20°C. The DNA is stable for at least one year from date of shipping when stored at -20°C.</li></ol>
<b>RefSeq:</b>	<a href="#">NM_001037170.2</a>
<b>RefSeq Size:</b>	2921 bp
<b>RefSeq ORF:</b>	927 bp
<b>Locus ID:</b>	641376
<b>UniProt ID:</b>	<a href="#">Q9CZR3</a>
<b>Cytogenetics:</b>	1 H3
<b>Gene Summary:</b>	Potential channel-forming protein implicated in import of protein precursors into mitochondria.[UniProtKB/Swiss-Prot Function]