

Product datasheet for **MG204355**

Ftsj1 (BC011144) Mouse Tagged ORF Clone

Product data:

Product Type:	Expression Plasmids
Product Name:	Ftsj1 (BC011144) Mouse Tagged ORF Clone
Tag:	TurboGFP
Symbol:	Ftsj1
Synonyms:	Ftsjl, Sfc12, Ftsj
Mammalian Cell Selection:	Neomycin
Vector:	pCMV6-AC-GFP (PS100010)
E. coli Selection:	Ampicillin (100 ug/mL)
ORF Nucleotide Sequence:	>MG204355 representing BC011144 Red=Cloning site Blue=ORF Green=Tags(s)

TTTTGTAATACGACTCACTATAGGGCGGCCGGAATTCGTCGACTGGATCCGGTACCGAGGAGATCTGCC
GCC**CGATCGCC**

ATGGGACGGACATCTAAGGATAAACGGGATGTCTACTACCGCCTGGCCAAGGAGAATGGCTGGCGGGCCC
GAAGCGCTTTCAAGCTCCTGCAACTGGATGAGGAATTCTCGTGCTAGAGAGTGTGAAGCGAGCGGTTGC
AGTGTGTGCAGCCCTTTTTTTTTTTTTTTTGTGCGTCTGCAAAAGCGGGGGCCACGGTTCTGGTCAG
GTGGTGGCCGTGGACTTACAGGCTATGGCTCCACAACCAGGTGTGATACAGATACAGGGCGACATCACTC
AGCTTTCAACTGCCAAGGAGATCATCCAGCACTTTGAAGGCTGCCCTGCTCTGTTTGTGTGTGAAGG
GGCTCCTGATGTCACTGGTCTCCATGATGTGGATGAGTACATGCAGGCCAGCTTCTGCTAGCTGCTCTC
AACATCGTACTCATGTCTTGAAGCTAGGGGGCTCTTCTGTGGCCAAGATATCCGAGGCCGGGATGTGA
CCCTGCTCTACAGCCAACACTACGTATCTTCTTCCCCAGTGTGCTCTGCGCTAAGCCCAAGAGCAGCCGGAA
CTCTAGCATTGAGGCCTTTGCTGTGTGTCAGGGTTATGACCCCTCTGAGGGCTTCATTCCAGACCTGACC
AGACCCCTGTGAACCACTCATATGATTTCAACCAGTTGGATGGTCCCACCCGTGTTATTGTGCCCTTTG
TGGCCTGTGGGGACCTCAGCGCCTACGATTCGGACCGCACTTACTCTCTGGATCCCCCATCGCACCCCC
ATACCAAGAGGCCTGCAGGTTGAAGAAGAATGGACAGCTGGCCAAGGAACTCTCCCCAAGAATGCTCC
ATCAACAGTGTGGACAAGTTGCCCCAGCCTCTGGCTATCCATACCCTGTAGACCCCAAGGTGGAAGACA
ATGAAATTCATTGT

ACGCGTACGCGGCCGCTCGAG - GFP Tag - GTTTAA



[View online »](#)

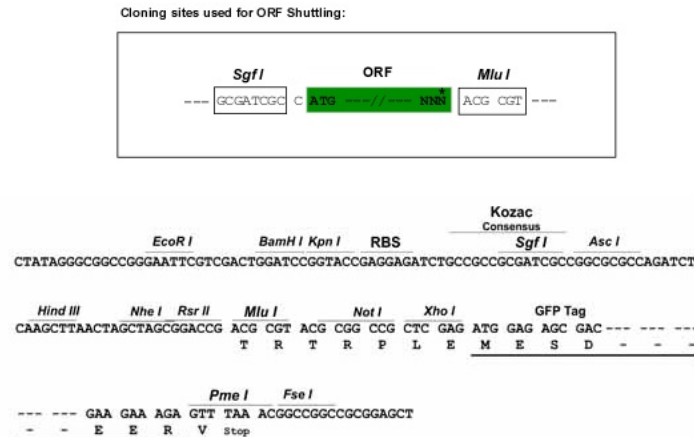
Protein Sequence: >MG204355 representing BC011144
Red=Cloning site Green=Tags(s)

MGRTSKDKRDVYRLAKENGWRARSFAKLLQLDEEFSLLESVKRAVAVCAAPFFFFVRLQKAGGHGSGQ
 VVAVDLQAMAPQPGVIQIQGDITQLSTAKEIIQHFEPCALFVAVCEGAPDVTGLHDVDEYMQAQLLLAAL
 NIATHVLKLGCCFVAKIFRGRDVTLLYSQLRIFFPSVLCAKPKSSRNSSIEAFVAVCQGYDPPPEGFIPDLT
 RPLLNHSDYDFNQLDGPTRVIVPFVACGDL SAYDSDRTYSLDPPIAPPYQEACRLKKNQQLAKELLPQEC
 INSVDKLPQPLAIHTLLDPKVEDNEIHC

TRTRPLE - GFP Tag - V

Restriction Sites: SgfI-MluI

Cloning Scheme:



ACCN: BC011144

ORF Size: 924 bp

OTI Disclaimer: The molecular sequence of this clone aligns with the gene accession number as a point of reference only. However, individual transcript sequences of the same gene can differ through naturally occurring variations (e.g. polymorphisms), each with its own valid existence. This clone is substantially in agreement with the reference, but a complete review of all prevailing variants is recommended prior to use. [More info](#)

OTI Annotation: This clone was engineered to express the complete ORF with an expression tag. Expression varies depending on the nature of the gene.

Components: The ORF clone is ion-exchange column purified and shipped in a 2D barcoded Matrix tube containing 10ug of transfection-ready, dried plasmid DNA (reconstitute with 100 ul of water).

Reconstitution Method:

1. Centrifuge at 5,000xg for 5min.
2. Carefully open the tube and add 100ul of sterile water to dissolve the DNA.
3. Close the tube and incubate for 10 minutes at room temperature.
4. Briefly vortex the tube and then do a quick spin (less than 5000xg) to concentrate the liquid at the bottom.
5. Store the suspended plasmid at -20°C. The DNA is stable for at least one year from date of shipping when stored at -20°C.

RefSeq: [BC011144.1](#)

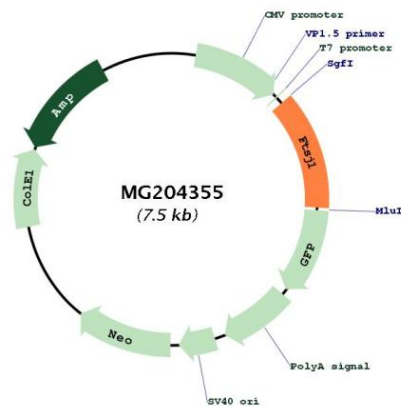
RefSeq Size: 1543 bp

RefSeq ORF: 926 bp

Locus ID: 54632

Cytogenetics: X 3.73 cM

Product images:



Circular map for MG204355