

Product datasheet for **MG204308**

Bxdc1 (BC025093) Mouse Tagged ORF Clone

Product data:

Product Type:	Expression Plasmids
Product Name:	Bxdc1 (BC025093) Mouse Tagged ORF Clone
Tag:	TurboGFP
Symbol:	Bxdc1
Mammalian Cell Selection:	Neomycin
Vector:	pCMV6-AC-GFP (PS100010)
E. coli Selection:	Ampicillin (100 ug/mL)
ORF Nucleotide Sequence:	>MG204308 representing BC025093 Red=Cloning site Blue=ORF Green=Tags(s)

TTTTGTAATACGACTCACTATAGGGCGGCCGGAATTCGTCGACTGGATCCGGTACCGAGGAGATCTGCC
GCC**CGATCGCC**

ATGGATGCTTTGGACAAAGTTCTAAAGCCTAAAACCTAAAAGGGCTAAGAGATTCCTTGAGAAGAGAGAAC
CGAAACTCACTGAGAACATTAAGAATGCCATGCTGATTAAGGCGGAAATGCAAAATGCAACCGTGACACA
AGTACTCAGAGACATGTATGCACTGAAGAAACCATATGGAGTTCTCTATAAAAAGAAAAATATTACAAGA
CCATTTGAGGATCAGACGTCCTGGAGTTCTTTCAAAGAAGTCAGACTGCTCTTTATTCATGTTTGGCT
CCCATAACAAGAAGAGGCCAAATAACCTAGTAATAGGTCGTATGTATGACTACCATGTGCTGGATATGAT
TGAATTAGGTATTGAGAAATTTGTGTCTCTAAAAGATATTAAGACTAGTAAGTGCCCGAGGGAACAAAA
CCGATGTTGATATTTGCTGGTGATGATTTTGATGTAACAGAAGACTACAGAAGATTAAAAAATCTTCTTA
TTGATTTCTTCAGAGGCCCCACAGTATCGAACGTCGGCTGGCTGGATTAGAGTATGTTCTGCACCTCAC
TGCACTGAATGGGAAGGTTTACTTCCGAAGCTATAAGCTGCTGTTGAAGAAATCTGGGTGCAGAACACCA
CGAATCGAGCTAGAAGAGATGGGACCATCACTGGACCTGGTCATGAGGAGGACACACCTAGCATCAGATG
ACCTTTATAAACTGTCCATGAAAGTGCCCAAGGCTCTCAAGCCAAAGAAGAGAAAGAATATCTCTCAGGA
TACTTTTGGCACAAACATTTGGAAGGATTCATATGCAGAAGCAAGACTTAAGCAAACCTACAAACGAGGAAA
ATGAAGGGGTTGAAGAAGCGACCTGCAGAGAATGGAGTAGACACCAGGGGAAAAAATCAAAGAGAATTA
AGAAAAAT

ACGCGTACGCGGCCGCTCGAG - GFP Tag - GTTTAA



[View online »](#)

Protein Sequence: >MG204308 representing BC025093
 Red=Cloning site Green=Tags(s)

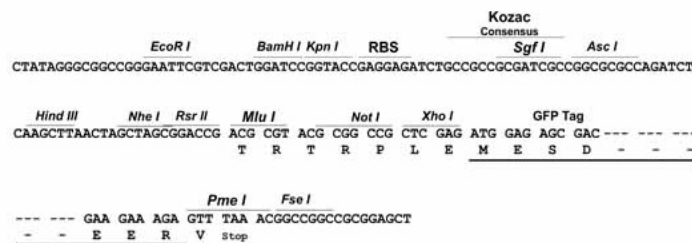
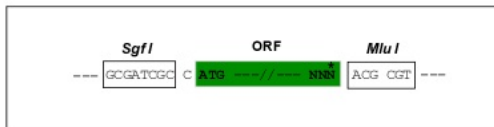
MDALDKVLKPKTKRAKRFLEKREPKL TENIKNAML IKGGNANATVTQVLRDMYALKKPYGVLYKKKNITR
 PFEDQTSLEFFSKKSDCSLFMFGSHNKKRPNNL VIGRMYDYHVLDMIELGIEKFVSLKDIKTSKCPEGTK
 PMLIFAGDDFDVTEYRRLKNLL IDFFRGPTVSNVRLAGLEYVLHFTALNGKVYFRSYKLLLLKSGCRTP
 RIELEEMGPSLDLVMRRTHLASDDL YKLSMKVPKALKPKKRKNI SQDTFGTTFGRIMQKQDL SKLQTRK
 MKGLKKRPAENGVDQGKKSRIKKN

TRTRPLE - GFP Tag - V

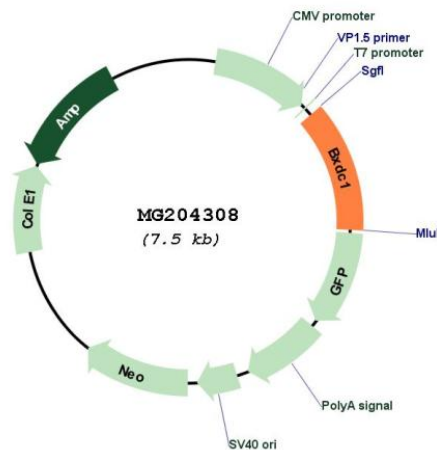
Restriction Sites: SgfI-MluI

Cloning Scheme:

Cloning sites used for ORF Shutting:



Plasmid Map:



ACCN: BC025093

ORF Size: 920 bp

OTI Disclaimer:	The molecular sequence of this clone aligns with the gene accession number as a point of reference only. However, individual transcript sequences of the same gene can differ through naturally occurring variations (e.g. polymorphisms), each with its own valid existence. This clone is substantially in agreement with the reference, but a complete review of all prevailing variants is recommended prior to use. More info
OTI Annotation:	This clone was engineered to express the complete ORF with an expression tag. Expression varies depending on the nature of the gene.
Components:	The ORF clone is ion-exchange column purified and shipped in a 2D barcoded Matrix tube containing 10ug of transfection-ready, dried plasmid DNA (reconstitute with 100 ul of water).
Reconstitution Method:	<ol style="list-style-type: none">1. Centrifuge at 5,000xg for 5min.2. Carefully open the tube and add 100ul of sterile water to dissolve the DNA.3. Close the tube and incubate for 10 minutes at room temperature.4. Briefly vortex the tube and then do a quick spin (less than 5000xg) to concentrate the liquid at the bottom.5. Store the suspended plasmid at -20°C. The DNA is stable for at least one year from date of shipping when stored at -20°C.
RefSeq:	BC025093
RefSeq Size:	1699 bp
RefSeq ORF:	920 bp
Locus ID:	67239
Cytogenetics:	10 B1
Gene Summary:	Involved in ribosomal large subunit assembly. May regulate the localization of the 5S RNP/5S ribonucleoprotein particle to the nucleolus.[UniProtKB/Swiss-Prot Function]