

Product datasheet for **MG204287**

Igfbp2 (NM_008342) Mouse Tagged ORF Clone

Product data:

Product Type: Expression Plasmids
Product Name: Igfbp2 (NM_008342) Mouse Tagged ORF Clone
Tag: TurboGFP
Symbol: Igfbp2
Synonyms: AI255832; IBP-2; IGFBP; Igfbp-2; mIGFBP-2
Mammalian Cell Selection: Neomycin
Vector: pCMV6-AC-GFP (PS100010)
E. coli Selection: Ampicillin (100 ug/mL)
ORF Nucleotide Sequence: >MG204287 representing NM_008342
 Red=Cloning site Blue=ORF Green=Tags(s)

TTTTGTAATACGACTCACTATAGGGCGGCCGGAATTCGTCGACTGGATCCGGTACCGAGGAGATCTGCC
 GCC**CGGATCGCC**

ATGCTGCCGAGATTGGGCGGCCCGCGCTGCCGCTGCTCCTGCCGTCGTTGCTCTTGCTGCTGCTCTTGG
 GCGCGGGCGGCTGCGGCCCGGGGTGCGCGCCGAGGTGCTGTTCCGCTGCCACCCTGCACGCCGAGCG
 TCTGGCCGCTTGGGGCCCCACCCGACGCGCCCTGCCCGAGCTGGTGCAGAGCCCGGCTGCGGCTGC
 TGCTCCGTGTGCGCACGGCAGGAGGGCGAAGCATGCGGCGTCTACATCCCGCGCTGCGCCGACGCTAC
 GCTGCTATCCCAACCCGGGCTCCGAGCTGCCCTGAAGGCGCTTGTACAGGCGGGTACCTGTGAAAA
 GAGACGCGTGGGACACCCACAGCAGTTGCAGACAGTGATGACGACCACTCTGAGGGAGGCCTGGTG
 GAGAACCACGTGGATGGGACCATGAACATGTTGGGAGGTGGTAGCAGTGCTGGCCGGAAGCCCTCAAGT
 CAGGCATGAAGGAGCTGGCTGTGTTCCGGGAGAAGGTAATGAACAGCACCGGCAGATGGGCAAGGGTGC
 CAAACACCTCAGTCTGGAGGAGCCAAAGAAGTTGCGCCCGCTCCCGCCAGGACCCCTTGCAGCAGGAG
 TTGGACCAGGTCTGGAGCGGATCTCCACCATGCGCCTCCGGATGATCGGGGCCCTGGAAACATCTCT
 ACTCCCTGCACATCCCAACTGTGACAAGCATGGCCGGTACAACCTTAAGCAGTGAAGATGTCTCTGAA
 CGGACAGCGCGGGGAGTGCTGGTGTGTGAACCCCAATACCGGGAAGCCCATCCAGGGAGCTCCACCATC
 CGGGGAGACCCCGAGTGCCATCTCTTCTACAACGAGCAGCAGGAGACTGGTGGGGCCCATGCCAAAGTG
 TGCAG

AG**CGGACCG**ACGCGTACGCGGCCGCTCGAG - GFP Tag - GTTTAA



[View online »](#)

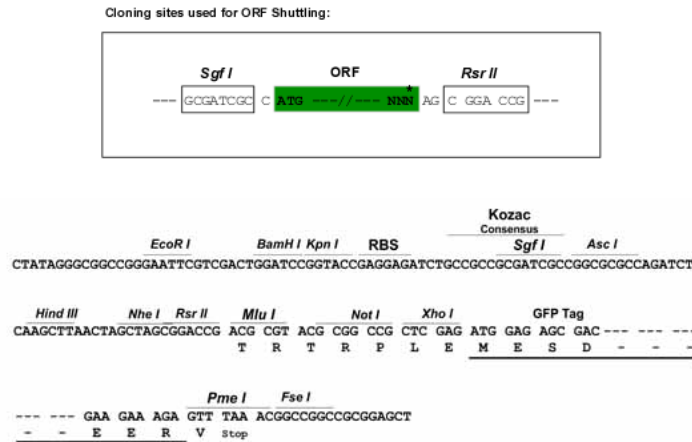
Protein Sequence: >MG204287 representing NM_008342
 Red=Cloning site Green=Tags(s)

MLPRLGGPALPLLLPSLLLLLLGAGGCGPGVRAEVLFRCPPTPERLAACGPPDPAPCAELVREPGCGC
 CSVCARQEAGEACGVYIPCAQTLRCYPNPGSELPLKALVTGAGTCEKRRVGTTPQQVADSDDDHSEGLV
 ENHVDGTMNMLGGSSAGRKPLKSGMKELAVFREKVNQHRQMGKAKHLSLEEKKLRRPPPARTPCQQE
 LDQVLERI STMRLPDDRGPLEHLYSLHIPPNC DKHG RY NLKQCKMSLNGQRGECWCVNPNTGKPIQGAPTI
 RGDPECHLFYNEQQETGGAHAQSVQ

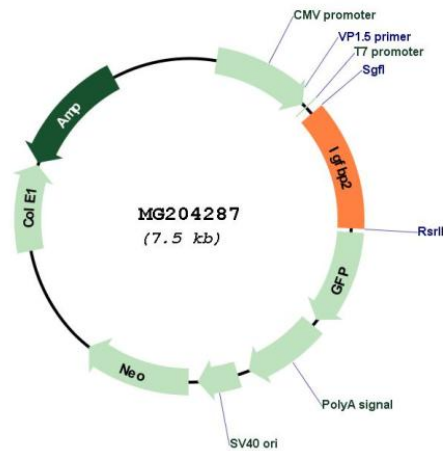
SGPTRRRLE - GFP Tag - V

Restriction Sites: SgfI-RsrII

Cloning Scheme:



Plasmid Map:



ACCN: NM_008342

ORF Size: 915 bp

OTI Disclaimer:	The molecular sequence of this clone aligns with the gene accession number as a point of reference only. However, individual transcript sequences of the same gene can differ through naturally occurring variations (e.g. polymorphisms), each with its own valid existence. This clone is substantially in agreement with the reference, but a complete review of all prevailing variants is recommended prior to use. More info
OTI Annotation:	This clone was engineered to express the complete ORF with an expression tag. Expression varies depending on the nature of the gene.
Components:	The ORF clone is ion-exchange column purified and shipped in a 2D barcoded Matrix tube containing 10ug of transfection-ready, dried plasmid DNA (reconstitute with 100 ul of water).
Reconstitution Method:	<ol style="list-style-type: none">1. Centrifuge at 5,000xg for 5min.2. Carefully open the tube and add 100ul of sterile water to dissolve the DNA.3. Close the tube and incubate for 10 minutes at room temperature.4. Briefly vortex the tube and then do a quick spin (less than 5000xg) to concentrate the liquid at the bottom.5. Store the suspended plasmid at -20°C. The DNA is stable for at least one year from date of shipping when stored at -20°C.
RefSeq:	NM_008342.3 , NP_032368.2
RefSeq Size:	1342 bp
RefSeq ORF:	918 bp
Locus ID:	16008
UniProt ID:	P47877
Cytogenetics:	1 36.94 cM
Gene Summary:	The protein encoded by this gene is one of several similar proteins that bind insulin-like growth factors I and II (Igf-I and Igf-II). The encoded protein can be secreted into the bloodstream, where it binds Igf-I and Igf-II with high affinity, or it can remain intracellular, interacting with many different ligands. Two transcript variants, one encoding a secreted isoform and the other encoding a nonsecreted isoform, have been found for this gene. [provided by RefSeq, Sep 2015]