

Product datasheet for **MG204275**

Csn1s1 (BC006024) Mouse Tagged ORF Clone

Product data:

Product Type:	Expression Plasmids
Product Name:	Csn1s1 (BC006024) Mouse Tagged ORF Clone
Tag:	TurboGFP
Symbol:	Csn1s1
Synonyms:	AA959832; AW212882; Cсна
Mammalian Cell Selection:	Neomycin
Vector:	pCMV6-AC-GFP (PS100010)
E. coli Selection:	Ampicillin (100 ug/mL)
ORF Nucleotide Sequence:	>MG204275 representing BC006024 Red=Cloning site Blue=ORF Green=Tags(s)

TTTTGTAATACGACTCACTATAGGGCGGCCGGAATTCGTCGACTGGATCCGGTACCGAGGAGATCTGCC
GCC**CGATCGCC**

ATGAAACTCCTCATCCTCACCTGCCTCGTGGCTGCTGCTTTTGCTATGCCAGACTTCATAGTAGAAATG
CAGTTAGCAGTCAAACCTCAGCAACAGCATAGCAGCAGTGAGGAAATTTTTAAACAACCAAAGTATCTCAA
CCTAAATCAGGAATTCGTCAACAACATGAACAGACAGAGACTTCTGACAGAACAGAACGATGAAATC
AAGGAACAAGCAATGGCAAGTCTCAGGAAGACTCTTCAATCAGCTCATCAAGTGAGGAATCTGAGGAAG
CTATTCCTCAATATCACTGAGCAGAAAAACATTGCAAAATGAAGACATGCTCAACCAGTGCACCCTGGAACA
GCTTCAGAGACAGTTAAGTACAACCAACTTCTCCAGAAAGCTTCCCTGGCTAAGCAAGCTTCCCTGTTT
CAGCAACCTTCCCTGGTACAGCAAGCTTCCCTGTTTCAGCAACCTTCCCTGCTTCAGCAAGCTTCCCTGT
TTCAGCAACCTTCCATGGCTCAGCAAGCTTCCCTGCTACAGCAACTTCTCCTGGCCAGCAACCTTCCCT
GGCACTGCAAGTTTCCCAAGCAGCAATCTTCCCTGGTACAGCAAGCTTTCCTGGCACAGCAAGCTTCC
CTGGCACAGAAACATCATCAAGACTGAGCCAGTCTACTATCCACATATGGAACAGCCTTACAGAAATGA
ATGCATACAGCCAAGTTCAAATGAGACATCCTATGAGTGTAGTGGATCAGGCACTGGCCAGTCTCTGT
TCAGCCCTTCCCAAAATCTTCCAGTATGATGCCTTTCCCTTTGGGCTTACTTTCCACAGGATATGCAG
TATCTTACTCCCAAAGCTGTCTTAACACCTTCAAGCCATTGTCTCAAGGATACTGAAAAACCAATG
TGTGG

ACGCGTACGCGGCCGCTCGAG - GFP Tag - GTTTAA



[View online »](#)

Protein Sequence: >MG204275 representing BC006024
 Red=Cloning site Green=Tags(s)

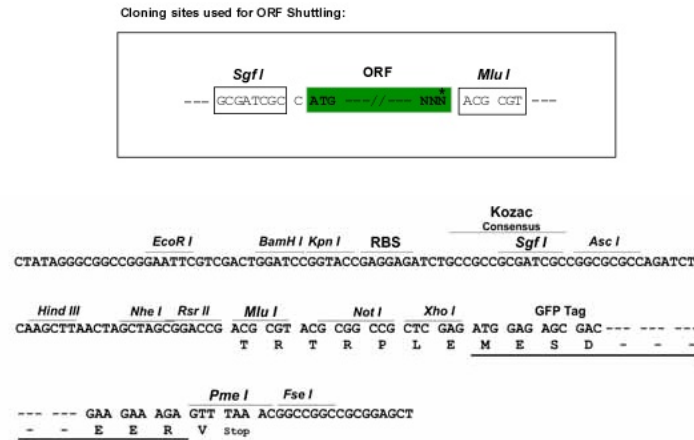
MKLLILTCLVAAAFAMPRLHSRNAVSSQTQQQHSSEEIFKQPKYLNLNQEFVNNMNRQRALLTEQNDEI
 KEQAMASAQEDSSI SSSSEEEAIPNI TEQKNI ANEDMLNQCTLEQLQRQFKYNQLLQKASLAKQASLF
 QQPSLVQQASLFQQPSLLQQASLFQQPSMAQQASLLQQLLLAQQPSLALQVSPAQQSSLVQQAFLAQQAS
 LAQKHHPRLSQSYYPHMEQPYRMNAYSQVQMRHPMSVVDQALAQFSVQPFQIFQYDAFPLWAYFPQDMQ
 YLTPKAVLNTFKPIVSKDTEKTNVW

TRTRPLE - GFP Tag - V

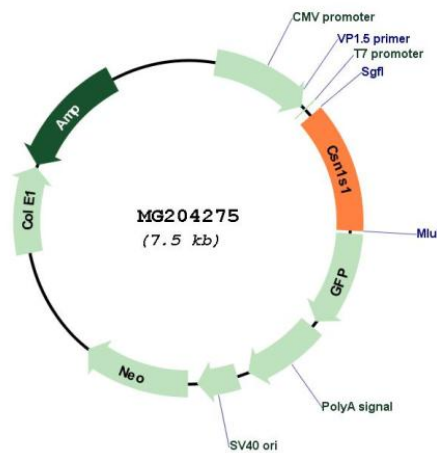
Restriction Sites:

Sgfl-MluI

Cloning Scheme:



Plasmid Map:



ACCN: BC006024

ORF Size: 917 bp

OTI Disclaimer:	The molecular sequence of this clone aligns with the gene accession number as a point of reference only. However, individual transcript sequences of the same gene can differ through naturally occurring variations (e.g. polymorphisms), each with its own valid existence. This clone is substantially in agreement with the reference, but a complete review of all prevailing variants is recommended prior to use. More info
OTI Annotation:	This clone was engineered to express the complete ORF with an expression tag. Expression varies depending on the nature of the gene.
Components:	The ORF clone is ion-exchange column purified and shipped in a 2D barcoded Matrix tube containing 10ug of transfection-ready, dried plasmid DNA (reconstitute with 100 ul of water).
Reconstitution Method:	<ol style="list-style-type: none">1. Centrifuge at 5,000xg for 5min.2. Carefully open the tube and add 100ul of sterile water to dissolve the DNA.3. Close the tube and incubate for 10 minutes at room temperature.4. Briefly vortex the tube and then do a quick spin (less than 5000xg) to concentrate the liquid at the bottom.5. Store the suspended plasmid at -20°C. The DNA is stable for at least one year from date of shipping when stored at -20°C.
RefSeq:	BC006024 , AAH06024
RefSeq Size:	1409 bp
RefSeq ORF:	917 bp
Locus ID:	12990
Cytogenetics:	5 43.56 cM
Gene Summary:	Important role in the capacity of milk to transport calcium phosphate.[UniProtKB/Swiss-Prot Function]