

Product datasheet for **MG204165**

Sult1b1 (NM_019878) Mouse Tagged ORF Clone

Product data:

Product Type: Expression Plasmids
Product Name: Sult1b1 (NM_019878) Mouse Tagged ORF Clone
Tag: TurboGFP
Symbol: Sult1b1
Synonyms: ST1B1; St2b2
Mammalian Cell Selection: Neomycin
Vector: pCMV6-AC-GFP (PS100010)
E. coli Selection: Ampicillin (100 ug/mL)
ORF Nucleotide Sequence: >MG204165 representing NM_019878
Red=Cloning site Blue=ORF Green=Tags(s)

TTTTGTAATACGACTCACTATAGGGCGGCCGGAATTCGTCGACTGGATCCGGTACCGAGGAGATCTGCC
GCC**CGCATCGCC**

ATGAGTGCCTCAGAAGACGTTTGGAGAAAAGATCTGAAGATGATCCATGGCTACCCCATGATCTATGCTT
TTGCACCTCAATTGGGAAAGGATTGAAGAGTTCCAGAGCACACCAGGTGACATTGTAATAACCACTTACCC
TAAATCAGGTAATACTTGGCTTAGTGAGATTGTAGACATGGTTCTAAATGATGGAATGTTGAAAAATGT
AAGAGAGATGTTATCACCTCCAAAGTTCCAATGTTGGAAGTGAAGTTCCTGGAATAAGAATATCAGGTG
TTGAAGTCTTGAAGAAAAGTCCATCACCTCGGATAATAAAGACACATCTCCAATCGATCTACTCCCAA
ATCCTTCTGGGAGAACAAAGTGAAGATGATTTACCTTGCCTGAAATGGCAAGGATGTTGCTGCTCCTAT
TATCATTTTATGATCTGATGAATAGTATTAATCCTCTTCTGGCACCTGGGAAGAATATCTGGAGAAATTC
TAGCTGGAAATGTGGCCTATGGTTCATGGTTTATCATGTTAAGAGTTGGTGGGAAAAGAGGGAAGAGCA
TCCTTTACTTTACTTATACTATGAAGAATTGAAACAGAACCCAAAGAAAGAAATCAAGAAGATAGCCAGC
TTTCTAGACAAGACCTTGGATGAAGAGGCTTGGACAGGATCGTCCATCACACCTCCTTTGAAATGATGA
AGGAAAACCCCTGGTCAATTACACCATCTGCCACAGCAATGATGGACCACAGCAAGTCCCCTTTCAT
GAGAAAAGGATTGTTGGGACTGGAAAAATTACTTACAATGACCCAACTGAGCAATTTGATGCTGTC
TATAAGAAGAAGATGTCTGGAACAACACTTGAGTTCTGCACAGACATTCAGAGTGCC

ACGCGTACGCGGCCGCTCGAG - GFP Tag - GTTTAA



[View online »](#)

Protein Sequence: >MG204165 representing NM_019878
 Red=Cloning site Green=Tags(s)

MSASEDVWRKDLKMIHGYPMIYAFALNWERIEEFQSTPGDIVITTYPKSGTTWLSEIVDMVLNDGNVEKC
 KRDVITSKVPMLELSVPGIRISGVELLKKTPSPRIKTHLPIDLLPKSFWENKCKMIYLARNKDVAVSY
 YHFDLMNSINPLPGTWEEYLEKFLAGNVAYGSWFDHVKSWEKREEHLLYLYEELKQNPKEIKKIAS
 FLDKTLDEEALDRIVHHTSFEMMKENPLVNYTHLPTAMMDHSKSPFMRKGIVGDWKNYFTMTQTEQFDAV
 YKKKMSGTTLEFCTDIQSA

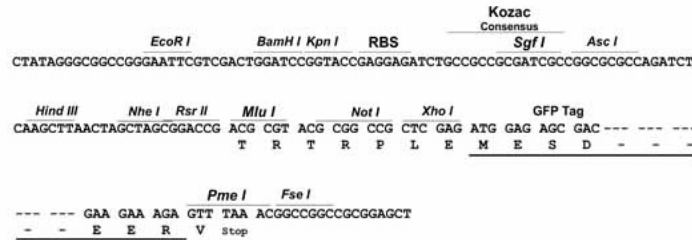
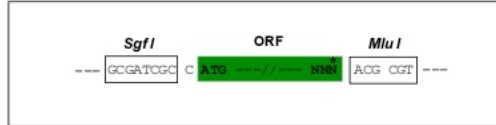
TRTRPLE - GFP Tag - V

Restriction Sites:

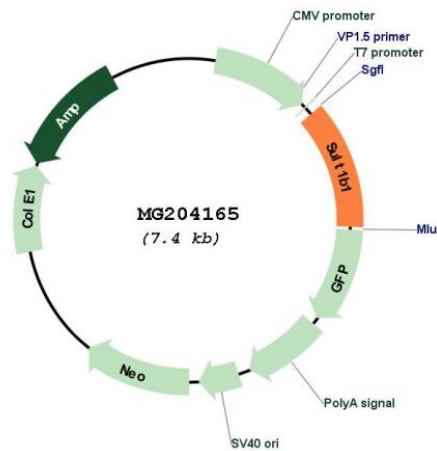
Sgfl-MluI

Cloning Scheme:

Cloning sites used for ORF Shuttling:



Plasmid Map:



ACCN: NM_019878

ORF Size: 897 bp

OTI Disclaimer:	The molecular sequence of this clone aligns with the gene accession number as a point of reference only. However, individual transcript sequences of the same gene can differ through naturally occurring variations (e.g. polymorphisms), each with its own valid existence. This clone is substantially in agreement with the reference, but a complete review of all prevailing variants is recommended prior to use. More info
OTI Annotation:	This clone was engineered to express the complete ORF with an expression tag. Expression varies depending on the nature of the gene.
Components:	The ORF clone is ion-exchange column purified and shipped in a 2D barcoded Matrix tube containing 10ug of transfection-ready, dried plasmid DNA (reconstitute with 100 ul of water).
Reconstitution Method:	<ol style="list-style-type: none">1. Centrifuge at 5,000xg for 5min.2. Carefully open the tube and add 100ul of sterile water to dissolve the DNA.3. Close the tube and incubate for 10 minutes at room temperature.4. Briefly vortex the tube and then do a quick spin (less than 5000xg) to concentrate the liquid at the bottom.5. Store the suspended plasmid at -20°C. The DNA is stable for at least one year from date of shipping when stored at -20°C.
RefSeq:	NM_019878.4
RefSeq Size:	2607 bp
RefSeq ORF:	900 bp
Locus ID:	56362
UniProt ID:	Q9QWG7
Cytogenetics:	5 E1
Gene Summary:	Sulfotransferase that utilizes 3'-phospho-5'-adenylyl sulfate (PAPS) as sulfonate donor to catalyze the sulfate conjugation of many hormones, neurotransmitters, drugs and xenobiotic compounds. Sulfonation increases the water solubility of most compounds, and therefore their renal excretion, but it can also result in bioactivation to form active metabolites. Sulfates L-DOPA and D-DOPA, tyrosine isomers such as DL-m-tyrosine, dopamine and thyroid hormones.[UniProtKB/Swiss-Prot Function]