

Product datasheet for **MG204157**

Slc25a21 (NM_172577) Mouse Tagged ORF Clone

Product data:

Product Type: Expression Plasmids
Product Name: Slc25a21 (NM_172577) Mouse Tagged ORF Clone
Tag: TurboGFP
Symbol: Slc25a21
Synonyms: 9930033G19Rik; A630030I10; BB158148
Mammalian Cell Selection: Neomycin
Vector: pCMV6-AC-GFP (PS100010)
E. coli Selection: Ampicillin (100 ug/mL)
ORF Nucleotide Sequence: >MG204157 representing NM_172577
 Red=Cloning site Blue=ORF Green=Tags(s)

TTTTGTAATACGACTCACTATAGGGCGGCCGGAATTCGTCGACTGGATCCGGTACCGAGGAGATCTGCC
 GCC**CGATCGCC**

ATGTCGGCCTCCAACGTCAGCTTACTGCACGAGACCTCCAGGCAGGTCGCGGCCGGAGGGTCTGCAGGTC
 TTGTAGAAATTTGCCTGATGCATCCTCTCGATGTGGTAAAACCAGGTTCCAGGTGCAGAGAAGTGAAC
 AGACCCACAAAGTTATAGAAGTGAAGAGGCAGCTTCCAGATGATCTCCGAACAGAGGGGTTGTTTGGC
 TTTTACAAGGGAATTATCCACCAATTTTAGCTGAAACACAAAAAGAGCAGTCAAGTTTTCTACCTTTG
 AGCTGTACAAGAAATTTCTGGGATATATGCACTATCACCAGGGCTGACATTTCTCATCGCTGGCTTAGG
 ATCGGGACTAACAGAAGCTGTCGTGGTTAACCTTTTCGAGGTGGTAAAAGTTGGCTTGCAAGTCAATCGG
 AACTTGTTCAAAGAGCAACCATCTACTTTTGCTTATGCAAGACAAATCATTAAAGAAGGAAGGCTTGGGGT
 TCCAGGGCCTCAACAAAGGATTGACAGCAACTCTGGGACGTCACGGAATTTTCAACATGGTTATTTTGG
 CTTCTACCACAACGTCAAAAATATTATCCATCCAGTAAGGATCCAACCTTGGAGTTTTTGGAAAAATTT
 GGGATTGGTTTTGTCTCAGGGACAATGGGCTCAGTGTAAACATCCCCTTTGATGTTGCAAAGAGTCGGA
 TCCAAGGGCCCCAGCCAGTTCTGGAGAGATCAAGTACCGAAGCTGCTTCAAACAATGGAGATGATCTA
 CCGGGAAGAAGGGATTTAGCCTTATACAAAGGCTGGTCCCTAAGGTGATGAGACTGGACCAGGTGGT
 GGGGTGATGTTGCTGGTGTATGAATACACCTATGCATGGCTGCAGGAAAACCTGG

ACGCGTACGCGGCCGCTCGAG - GFP Tag - GTTTAA



[View online »](#)

Protein Sequence: >MG204157 representing NM_172577
Red=Cloning site Green=Tags(s)

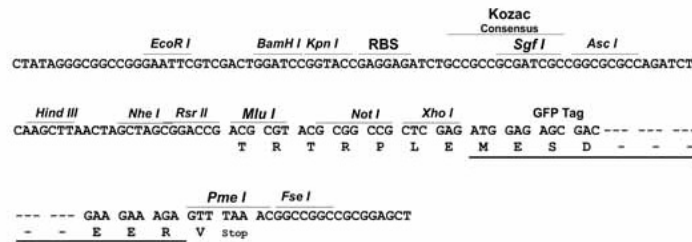
MSASNVSLHETS RQVAAGGSAGLVEICLMHPLDVVKTRFQVQSVTDPQSYRTV RGSFQMI FRTEGLFG
 FYKGIIPPILAETPKRAVKFSTFEL YKKFLGYMSLSPGLTFLIAGLGSGLTEAVVNPFEVVKVGLQVNR
 NLFKEQPS TFAYARQIIKKEGLGFQGLNKGLTATLGRHGIFNMVYFGFYHNVKNIIPSSKDPTLEFLRKF
 GIGFVSGTMGSVFNIPFDVAKSRIQGPQVPGEIKYRSCFKT MEMIYREEGILALYKGLVPKVMRLGPGG
 GVMLLVYEYTYAWLQENW

TRTRPLE - GFP Tag - V

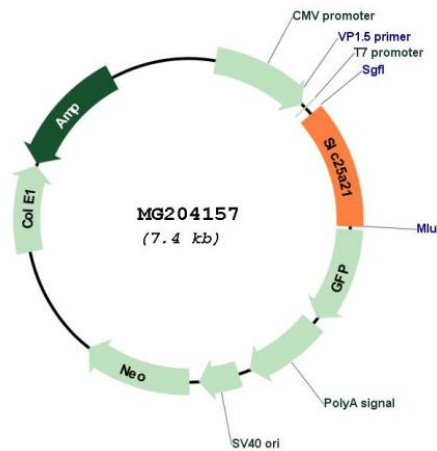
Restriction Sites: SgfI-MluI

Cloning Scheme:

Cloning sites used for ORF Shuttling:



Plasmid Map:



ACCN: NM_172577

ORF Size: 894 bp

OTI Disclaimer:	The molecular sequence of this clone aligns with the gene accession number as a point of reference only. However, individual transcript sequences of the same gene can differ through naturally occurring variations (e.g. polymorphisms), each with its own valid existence. This clone is substantially in agreement with the reference, but a complete review of all prevailing variants is recommended prior to use. More info
OTI Annotation:	This clone was engineered to express the complete ORF with an expression tag. Expression varies depending on the nature of the gene.
Components:	The ORF clone is ion-exchange column purified and shipped in a 2D barcoded Matrix tube containing 10ug of transfection-ready, dried plasmid DNA (reconstitute with 100 ul of water).
Reconstitution Method:	<ol style="list-style-type: none">1. Centrifuge at 5,000xg for 5min.2. Carefully open the tube and add 100ul of sterile water to dissolve the DNA.3. Close the tube and incubate for 10 minutes at room temperature.4. Briefly vortex the tube and then do a quick spin (less than 5000xg) to concentrate the liquid at the bottom.5. Store the suspended plasmid at -20°C. The DNA is stable for at least one year from date of shipping when stored at -20°C.
RefSeq:	NM_172577.3
RefSeq Size:	2421 bp
RefSeq ORF:	897 bp
Locus ID:	217593
UniProt ID:	Q8BZ09
Cytogenetics:	12 C1
Gene Summary:	Transports C5-C7 oxodicarboxylates across the inner membranes of mitochondria. Can transport 2-oxoadipate, 2-oxoglutarate, adipate, glutarate, and to a lesser extent, pimelate, 2-oxopimelate, 2-aminoadipate, oxaloacetate, and citrate (By similarity).[UniProtKB/Swiss-Prot Function]