

## Product datasheet for **MG204137**

### Mlx (NM\_011550) Mouse Tagged ORF Clone

#### Product data:

Product Type:	Expression Plasmids
Product Name:	Mlx (NM_011550) Mouse Tagged ORF Clone
Tag:	TurboGFP
Symbol:	Mlx
Synonyms:	bHLHd13; Tcf14; Tf4
Mammalian Cell Selection:	Neomycin
Vector:	pCMV6-AC-GFP (PS100010)
E. coli Selection:	Ampicillin (100 ug/mL)
ORF Nucleotide Sequence:	>MG204137 representing NM_011550 Red=Cloning site Blue=ORF Green=Tags(s)

TTTTGTAATACGACTCACTATAGGGCGGCCGGAATTCGTCGACTGGATCCGGTACCGAGGAGATCTGCC  
GCC**CGATCGCC**

ATGACGGAGCCGGGCGCCTCTCCGGAGGACCCTTGGGTCAAGGCAAGCTTCGCGGACGCGCACGCCGGCG  
AGGGGAGGGCGGGTCTGGGCTCGTGCACGTAGGGGGTCCGGAAGACGCGGGGCTCCCAACTATCCCCAGA  
GTCTCCCCTGCTGTCCGGGGCCCGGGCTGCAGAGAAGACAGCTCTACCCGGCCTGTGCCAAGGTCGAG  
TATGCCTACAGTGACAACAGCCTGGATCCTGGGCTTTTTGTAGAAAGCACCCACAAGGGGAGTGTAGTGT  
CCAGAGCTAATAGCATCGGCTCCACCAGTGCCTTCTGTCCCAACACAGATGAGGAGGACAGTGATTA  
TCAGCAGGAGTCTACAAGGAGTCTACAAGACCGGAGGCGGCTGCGCACACTCAGGCTGAACAGAAG  
AGAAGGGATGCTATTAAGAGAGGCTATGATGACCTTCAGACCATTGTCCCTACCTGCCAGCAGCAGGATT  
TCTCCATTGGCTCCCAAAAAGCAGCAAAGCCATCGTTCTACAGAAGACCATTGACTACATCCAGTTTTT  
ACACAAGGAGAAGAAAAAGCAGGAGGAAGAAGTATCCACACTGCGCAAGGACGTCACAGCCTTGAAGATA  
ATGAAAGTGAAGTATGAGCAAATCGTGAAGGCACATCAGGACAACCCTCATGAGGGAGAGGACCAGGTCT  
CTGACCAGGTCAAGTTCAACGTCTTTCAAGGCATCATGGACTCCCTCTCCAGTCTTTCAACGCCTCTAT  
CTCTGTGGCCAGCTTCCAGGAGCTCTCAGCTTGTGTCTTCAGCTGGATTGAGGAACACTGTGAGCCACAG  
ACTCTACGAGAGATTGTGATCGGTGTCTTCATCAGTTGAAAAACCAACTCTAC

**ACGCGT**ACGCGGCCGCTCGAG - GFP Tag - GTTTAA



[View online »](#)

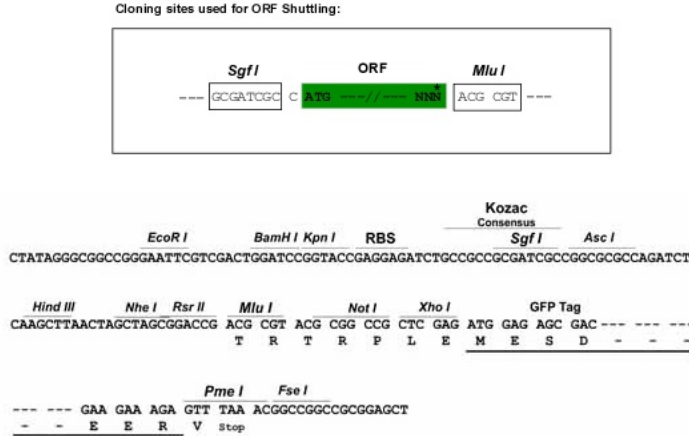
**Protein Sequence:** >MG204137 representing NM\_011550  
 Red=Cloning site Green=Tags(s)

MTEPGASPEDPWVKASFADAHAGEGRAGRARARRGSGRRGAPQLSPESPLLSGARGCREDDSSHPACAKVE  
 YAYSDNSLDPGLFVESTHKGSVVSRRANSIGSTSASSVPNTDEEDSDYQQESYKESYKDRRRRAHTQAEQK  
 RRDAIKRGYDDLQTIPTCQQQDFSIGSQKLSKAIVLQKTIQFLHKEKKKQEEVSTLRKDVTKI  
 MKVNYEQIVKAHQDNPHGEDQVSDQVKFNVFQGMDSLFQSFNASISVASFQELSACVFSWIEEHCEPQ  
 TLREIVIGVLHQLKNQLY

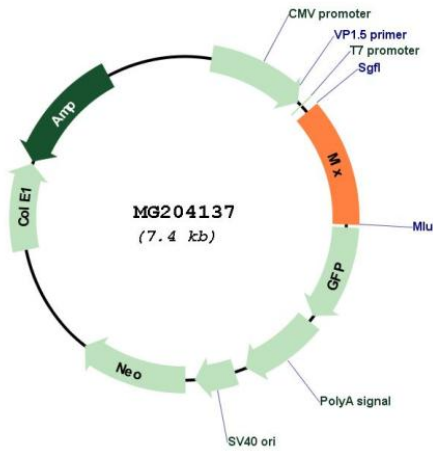
TRTRPLE - GFP Tag - V

**Restriction Sites:** SgfI-MluI

**Cloning Scheme:**



**Plasmid Map:**



**ACCN:** NM\_011550

**ORF Size:** 894 bp

<b>OTI Disclaimer:</b>	<p>Due to the inherent nature of this plasmid, standard methods to replicate additional amounts of DNA in E. coli are highly likely to result in mutations and/or rearrangements. Therefore, OriGene does not guarantee the capability to replicate this plasmid DNA. Additional amounts of DNA can be purchased from OriGene with batch-specific, full-sequence verification at a reduced cost. Please contact our customer care team at <a href="mailto:custsupport@origene.com">custsupport@origene.com</a> or by calling 301.340.3188 option 3 for pricing and delivery.</p> <p>The molecular sequence of this clone aligns with the gene accession number as a point of reference only. However, individual transcript sequences of the same gene can differ through naturally occurring variations (e.g. polymorphisms), each with its own valid existence. This clone is substantially in agreement with the reference, but a complete review of all prevailing variants is recommended prior to use. <a href="#">More info</a></p>
<b>OTI Annotation:</b>	This clone was engineered to express the complete ORF with an expression tag. Expression varies depending on the nature of the gene.
<b>Components:</b>	The ORF clone is ion-exchange column purified and shipped in a 2D barcoded Matrix tube containing 10ug of transfection-ready, dried plasmid DNA (reconstitute with 100 ul of water).
<b>Reconstitution Method:</b>	<ol style="list-style-type: none"> <li>1. Centrifuge at 5,000xg for 5min.</li> <li>2. Carefully open the tube and add 100ul of sterile water to dissolve the DNA.</li> <li>3. Close the tube and incubate for 10 minutes at room temperature.</li> <li>4. Briefly vortex the tube and then do a quick spin (less than 5000xg) to concentrate the liquid at the bottom.</li> <li>5. Store the suspended plasmid at -20°C. The DNA is stable for at least one year from date of shipping when stored at -20°C.</li> </ol>
<b>RefSeq:</b>	<a href="#">NM_011550.2</a> , <a href="#">NP_035680.2</a>
<b>RefSeq Size:</b>	1984 bp
<b>RefSeq ORF:</b>	897 bp
<b>Locus ID:</b>	21428
<b>UniProt ID:</b>	<a href="#">O08609</a>
<b>Cytogenetics:</b>	11 D
<b>Gene Summary:</b>	Transcription regulator. Forms a sequence-specific DNA-binding protein complex with MAD1, MAD4, MNT, WBSCR14 and MLXIP which recognizes the core sequence 5'-CACGTG-3'. The TCFL4-MAD1, TCFL4-MAD4, TCFL4-WBSCR14 complexes are transcriptional repressors. Plays a role in transcriptional activation of glycolytic target genes. Involved in glucose-responsive gene regulation.[UniProtKB/Swiss-Prot Function]