

Product datasheet for **MG204120**

Abhd10 (NM_172511) Mouse Tagged ORF Clone

Product data:

Product Type: Expression Plasmids
 Product Name: Abhd10 (NM_172511) Mouse Tagged ORF Clone
 Tag: TurboGFP
 Symbol: Abhd10
 Mammalian Cell Selection: Neomycin
 Vector: pCMV6-AC-GFP (PS100010)
 E. coli Selection: Ampicillin (100 ug/mL)
 ORF Nucleotide Sequence: >MG204120 representing NM_172511
 Red=Cloning site Blue=ORF Green=Tags(s)

TTTTGTAATACGACTCACTATAGGGCGGCCGGAATTCGTCGACTGGATCCGGTACCGAGGAGATCTGCC
 GCC**CGATCGCC**

ATGGCGCCTGGGCCCTTGTCGGAGGTGGGGCTGGGCGGCTGTGTCTTCGGCCGGCACCCGGCCTGA
 GCGCGTCACTAGCTCGGAAGCCCCACGGGCATGGTGGCTCTCAGCTTGCAGACAAAAGGCATCACTTTC
 TTTCTTAACCGATCAGAACTTCCAAACCTGGCTTATAAGAGGTTAAAAGGCAAAACCCAGGAATTATC
 TTCATCCCTGGCTATCTTTCTAACATGAATGGTATAAAGGCAGTAGCAGTTGAGGAGTTTTGCAAATCTC
 TAGGTCACGCCTTATAAGGTTTGACTACTCAGGGATTGGAAGTTCAGATGGTAACTTAGCAGAGTGCAC
 AGTGGGAAAATGGAGAAAGGATGTCCTTTCCATACTTGATGACGTAGCTGAAGGACCGCAGATACTGGTT
 GGATCCAGTCTTGGTGGATGGCTCATGCTGCATGCTGCAATTGCACGGCCGAAAAAGTCATAGCTCTTA
 TTGGTATAGCTACTGCTGCAGATGGATTGGTGACACAATATCATGCACTTCTGTGAGACTCAAAAGGA
 AATAGAAATGAAAGGTGAGTGGACCTTGCCATCTAGATACAACAAGGAAGGCTATTTTCAAGATCCCGTAC
 AGTTTCATTAAGAAGCGGAGCATCACTGCTTGTTCATAGCCCCATCCCTGTGACCTGCCCTGTACGCT
 TGCTCCACGGCATGAAGGATGAAATAGTTCCTTGGCAGAGATCCCTGCAGGTCGGGACCGAATAGTCAG
 CCCAGATGTAGATGTCATCCTCCGAAACAAGGTGATCACAGGATGAAGGAGAAAGCAGATATTCATCTG
 CTTATTTGACTATTGATGACTTGATTGACAAGCTTCAACTGTAGTTCCG

ACGCGTACGCGGCCGCTCGAG - GFP Tag - GTTTAA



[View online »](#)

Protein Sequence: >MG204120 representing NM_172511
Red=Cloning site Green=Tags(s)

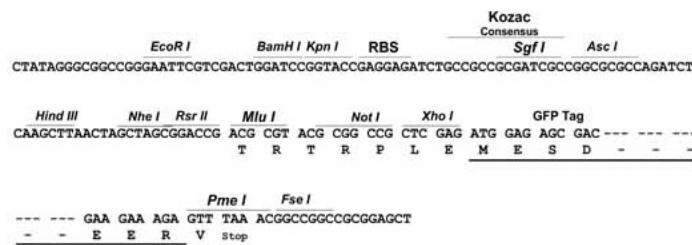
MAAWAPCRRWGAAVVSFGRHPGLSASLARKPPRAWLWSACRQKASLSFLNRSELPNLAYKRLKGKTPGII
 FIPGYLSNMNGIKAVAVEEFCKSLGHAFIRFDYSGIGSSDGNLAECTVGKWRKDVLSILDDVAEGPQILV
 GSSLGGWMLHAAIARPEKVIALIGIATAADGLVTQYHALPVETQKEIEMKGEWTLPSRYNKEGYFRIPY
 SFIKEAEHHCLLHSPIPVTCVPRLLHGMKDEIVPWQSLQVADRIVSPDQVILRKQGDHRMKEKADIHL
 LICTIDDLIDKLSTVVP

TRTRPLE - GFP Tag - V

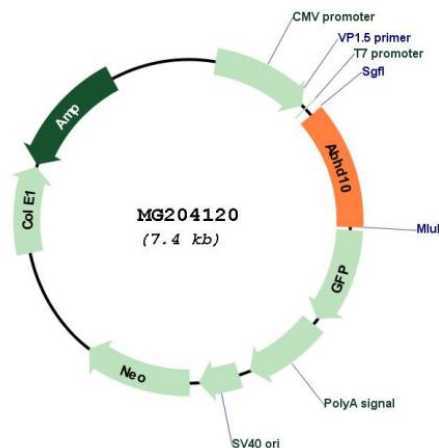
Restriction Sites: SgfI-MluI

Cloning Scheme:

Cloning sites used for ORF Shutting:



Plasmid Map:



ACCN: NM_172511

ORF Size: 891 bp

OTI Disclaimer:	The molecular sequence of this clone aligns with the gene accession number as a point of reference only. However, individual transcript sequences of the same gene can differ through naturally occurring variations (e.g. polymorphisms), each with its own valid existence. This clone is substantially in agreement with the reference, but a complete review of all prevailing variants is recommended prior to use. More info
OTI Annotation:	This clone was engineered to express the complete ORF with an expression tag. Expression varies depending on the nature of the gene.
Components:	The ORF clone is ion-exchange column purified and shipped in a 2D barcoded Matrix tube containing 10ug of transfection-ready, dried plasmid DNA (reconstitute with 100 ul of water).
Reconstitution Method:	<ol style="list-style-type: none">1. Centrifuge at 5,000xg for 5min.2. Carefully open the tube and add 100ul of sterile water to dissolve the DNA.3. Close the tube and incubate for 10 minutes at room temperature.4. Briefly vortex the tube and then do a quick spin (less than 5000xg) to concentrate the liquid at the bottom.5. Store the suspended plasmid at -20°C. The DNA is stable for at least one year from date of shipping when stored at -20°C.
RefSeq:	NM_172511.4
RefSeq Size:	2125 bp
RefSeq ORF:	894 bp
Locus ID:	213012
UniProt ID:	Q6PE15
Cytogenetics:	16 B5
Gene Summary:	This gene encodes a mitochondrially-localized enzyme that acts as a hydrolase. The encoded protein removes glucuronide from mycophenolic acid acyl-glucuronide. There are two pseudogenes for this gene on chromosome 8. Alternative splicing results in multiple transcript variants. [provided by RefSeq, Jan 2013]