

## Product datasheet for **MG204051**

### Csn1s1 (BC008278) Mouse Tagged ORF Clone

#### Product data:

Product Type:	Expression Plasmids
Product Name:	Csn1s1 (BC008278) Mouse Tagged ORF Clone
Tag:	TurboGFP
Symbol:	Csn1s1
Synonyms:	AA959832; AW212882; Cсна
Mammalian Cell Selection:	Neomycin
Vector:	pCMV6-AC-GFP (PS100010)
E. coli Selection:	Ampicillin (100 ug/mL)
ORF Nucleotide Sequence:	>MG204051 representing BC008278 Red=Cloning site Blue=ORF Green=Tags(s)

TTTTGTAATACGACTCACTATAGGGCGGCCGGAATTCGTCGACTGGATCCGGTACCGAGGAGATCTGCC  
GCC**CGATCGCC**

ATGAAACTCCTCATCCTCACCTGCCTCGTGGCTGCTGCTTTTGCTATGCCAGACTTCATAGTAGAAATG  
CAGTTAGCAGTCAAACCTCAGCAACAGCATAGCAGCAGTGAGGAAATTTTAAACAACCAAAGTATCTCAA  
CCTAAATCAGGAATTCGTCAACAACATGAACAGACAGAGAGCACTTCTGACAGAACAGAACGATGAAATC  
AAGGTAACATGGATGCAGCATCTGAGGAACAAGCAATGGCAAGTGCTCAGGAAGACTCTTCAATCAGCT  
CATCAAGTGAGGAATCTGAGGAAGCTATCCCAATATCACTGAGCAGAAAAACATTGCAATGAAGACAT  
GCTCAACCAAGTGCACCCTGGAACAGCTTCAGAGACAGTTTAAGTACAACCAACTTCTCCAGAAAGCTTCC  
CTGGCTAAGCAAGCTTCCCTGTTTCAGCAACCTTCCCTGGTACAGCAAGCTTCCCTGTTTCAGCAACCTT  
CCCTGTTTCAGCAAGCTTCCCTGTTTCAGCAACCTTCCATGGCTCAGCAAGCTTCCCTGTTTCAGCAACCT  
TCTCCTGGCCAGCAACCTTCCCTGGCACTGCAAGTTTCCCAGCACAGCAATCTTCCCTGGTACAGCAA  
GCTTTCCTGGCACAGCAAGCTTCCCTGGCACAGAAACATCATCCAAGACTGAGCCAGTCTACTATCCAC  
ATATGGAACAGCCTTACAGAATGAATGCATACAGCCAAGTTCAAATGAGACATCCTATGAGTGTAGTGGA  
TCAGGCACTGGCCAGTTCTCTGTTTCAGGATATGCAGTACCTTACTCCCAAAGCTGTCTTAACACCTTC  
AAGCCATTGTCTCCAAGGATACTGAAAAACCAATGTGTGG

**ACGCGT**ACGCGGCCGCTCGAG - GFP Tag - GTTTAA



[View online »](#)

**Protein Sequence:** >MG204051 representing BC008278  
 Red=Cloning site Green=Tags(s)

MKLLILTCLVAAAFAMPRLHSRNAVSSQTQQQHSSEEIFKQPKYLNLNQEFVNNMNRQRALLTEQNDEI  
 KVTMDAASEEQAMASAQEDSSISSSEESEEAI PNITEQKNIANEDMLNQCTLEQLQRQFKYNQLLQKAS  
 LAKQASLFQQPSLVQQASLFQQPSLLQQASLFQQPSMAQQASLLQQLLLAQQPSLALQVSPAQQSSSLVQQ  
 AFLAQASLAQKHHPRLSQSYYPHMEQPYRMNAYSQVQMRHPMSVVDQALAQF SVQDMQYLTPKAVLNTF  
 KPIVSKDTEKTNVW

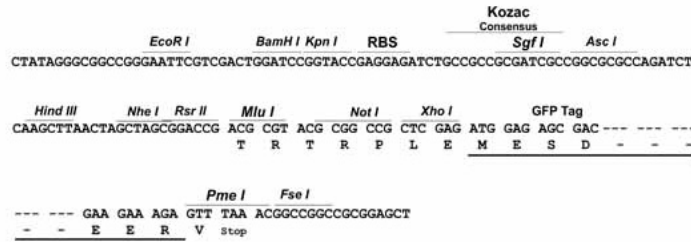
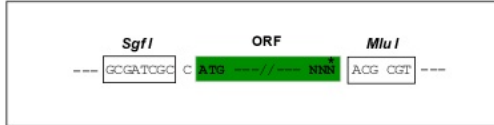
TRTRPLE - GFP Tag - V

**Restriction Sites:**

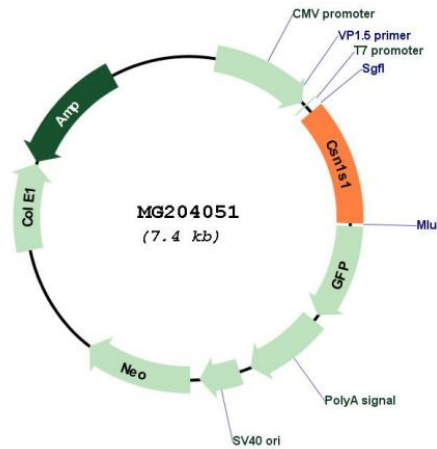
SgfI-MluI

**Cloning Scheme:**

Cloning sites used for ORF Shuttling:



**Plasmid Map:**



**ACCN:** BC008278

**ORF Size:** 884 bp

<b>OTI Disclaimer:</b>	The molecular sequence of this clone aligns with the gene accession number as a point of reference only. However, individual transcript sequences of the same gene can differ through naturally occurring variations (e.g. polymorphisms), each with its own valid existence. This clone is substantially in agreement with the reference, but a complete review of all prevailing variants is recommended prior to use. <a href="#">More info</a>
<b>OTI Annotation:</b>	This clone was engineered to express the complete ORF with an expression tag. Expression varies depending on the nature of the gene.
<b>Components:</b>	The ORF clone is ion-exchange column purified and shipped in a 2D barcoded Matrix tube containing 10ug of transfection-ready, dried plasmid DNA (reconstitute with 100 ul of water).
<b>Reconstitution Method:</b>	<ol style="list-style-type: none"><li>1. Centrifuge at 5,000xg for 5min.</li><li>2. Carefully open the tube and add 100ul of sterile water to dissolve the DNA.</li><li>3. Close the tube and incubate for 10 minutes at room temperature.</li><li>4. Briefly vortex the tube and then do a quick spin (less than 5000xg) to concentrate the liquid at the bottom.</li><li>5. Store the suspended plasmid at -20°C. The DNA is stable for at least one year from date of shipping when stored at -20°C.</li></ol>
<b>RefSeq:</b>	<a href="#">BC008278</a> , <a href="#">AAH08278</a>
<b>RefSeq Size:</b>	1397 bp
<b>RefSeq ORF:</b>	884 bp
<b>Locus ID:</b>	12990
<b>Cytogenetics:</b>	5 43.56 cM
<b>Gene Summary:</b>	Important role in the capacity of milk to transport calcium phosphate.[UniProtKB/Swiss-Prot Function]