

## Product datasheet for **MG204049**

### Taco1 (NM\_027346) Mouse Tagged ORF Clone

#### Product data:

Product Type:	Expression Plasmids
Product Name:	Taco1 (NM_027346) Mouse Tagged ORF Clone
Tag:	TurboGFP
Symbol:	Taco1
Synonyms:	2310066118Rik; Ccdc44
Mammalian Cell Selection:	Neomycin
Vector:	pCMV6-AC-GFP (PS100010)
E. coli Selection:	Ampicillin (100 ug/mL)
ORF Nucleotide Sequence:	>MG204049 representing NM_027346 Red=Cloning site Blue=ORF Green=Tags(s)

TTTTGTAATACGACTCACTATAGGGCGGCCGGAATTCGTCGACTGGATCCGGTACCGAGGAGATCTGCC  
GCC**CGATCGCC**

ATGATGTCTTGGGCTGCCGCCAGCCTGAGAATGACCGCTGTCCCGTGCTTCGTGTGCGATGCCTCGGGT  
TCCCGTGGGTCCTTGGGGCGCCTCCCAGCATGCAAACCCGGCTGTGGTGCAGCGCCACACAGGACGCT  
GCATGTCAGCGCGACGGCCTCGGGGACACAATAAGTGGTCTAAAGTCCGGCACATCAAGGGCCCCAAG  
GACATGAAAGGAGTGAATCTTCTCTAAACTCACTCTCAGTATCCGCCTGGCGGTTAAAGAGGGAGGCC  
CTAACCTGAGAACACAGCAGCCTGGCCAACATCTTAGAGTTGTGTCGAGCAAGAATATGCCCAAGTC  
AACCATCGAGTCAGCACTGAAGACAGAGAAAAACAAGGGCATTTATTTGCTATATGAGGGTCGTGGCCCT  
GGAGGCTCTTCTGCTCATTGAGGCGTTATCAAACAGTGGTCCCAAGTGCCATCTGGACATTAATATA  
TCCTGAACAAGAATGGGGGAATGATGGCTGAAGGAGCACGCCACTTTTTGACAAAAAGGAGTGTTGT  
TGTTGGAGTGGAGGACAGAGAGAAGAAAGCTGTGAACCTAGAGCGTGCCCTAGAAGTGGCCATCGAAGCA  
GGAGCCGAGGATGTGAAGGAAGCCGAAGACGAAGAAGAAAGAACCTTTTAAATTCATTTGTGATGCTT  
CTTCACTACATCAAGTGAGGAAAAACTGGACTCGCTGGGCTGTGCTGTGCTGCTGTTCAATGGAGTT  
CATCCCTCACTCAAGGTGCAGCTGGCTGAGCCGAGCTGGAGCAGGCTGCTCACCTCATCCAGGCGCTT  
AACAACTATGAGGATGTGATTACGTTTATGACAAATTTGAA

**ACGCGT**ACGCGGCCGCTCGAG - GFP Tag - GTTTAA



[View online »](#)

Protein Sequence: >MG204049 representing NM\_027346  
 Red=Cloning site Green=Tags(s)

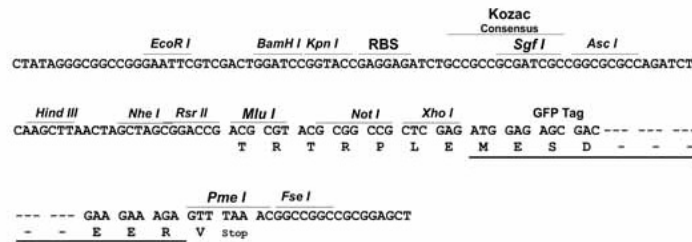
MMSWAAASLRMTAVPCFRVRCLGFRVGPWGASQHANPGCGAAPHRTLHVSATASAGHNKWSKVRHIKGP  
 DMERSRIFSKLTL SIRLAVKEGGPNPENSSLANILELCRSKNMPKSTIESALKTEKNKIYLLYEGRGP  
 GGSSLLIEALSNSGPKCHLDIKYILNKNNGMMAEGARHFFDKKGVVVVGVVEDREKKAVNLERALELAI  
 EA GAEDVKEAEDEEEKNLKFKFICDASSLHQVRKRLDSLGLCPVSCSMEFIPHSKVQLAEPELEQAHLI  
 QAL NNYEDVIHVYDNIE

TRTRPLE - GFP Tag - V

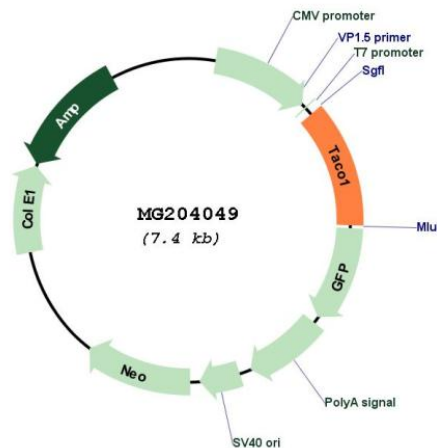
Restriction Sites: SgfI-MluI

Cloning Scheme:

Cloning sites used for ORF Shuttling:



Plasmid Map:



ACCN: NM\_027346

ORF Size: 882 bp

<b>OTI Disclaimer:</b>	The molecular sequence of this clone aligns with the gene accession number as a point of reference only. However, individual transcript sequences of the same gene can differ through naturally occurring variations (e.g. polymorphisms), each with its own valid existence. This clone is substantially in agreement with the reference, but a complete review of all prevailing variants is recommended prior to use. <a href="#">More info</a>
<b>OTI Annotation:</b>	This clone was engineered to express the complete ORF with an expression tag. Expression varies depending on the nature of the gene.
<b>Components:</b>	The ORF clone is ion-exchange column purified and shipped in a 2D barcoded Matrix tube containing 10ug of transfection-ready, dried plasmid DNA (reconstitute with 100 ul of water).
<b>Reconstitution Method:</b>	<ol style="list-style-type: none"><li>1. Centrifuge at 5,000xg for 5min.</li><li>2. Carefully open the tube and add 100ul of sterile water to dissolve the DNA.</li><li>3. Close the tube and incubate for 10 minutes at room temperature.</li><li>4. Briefly vortex the tube and then do a quick spin (less than 5000xg) to concentrate the liquid at the bottom.</li><li>5. Store the suspended plasmid at -20°C. The DNA is stable for at least one year from date of shipping when stored at -20°C.</li></ol>
<b>RefSeq:</b>	<a href="#">NM_027346.2</a>
<b>RefSeq Size:</b>	1351 bp
<b>RefSeq ORF:</b>	885 bp
<b>Locus ID:</b>	70207
<b>UniProt ID:</b>	<a href="#">Q8K0Z7</a>
<b>Cytogenetics:</b>	11 E1
<b>Gene Summary:</b>	Acts as a translational activator of mitochondrially-encoded cytochrome c oxidase 1. [UniProtKB/Swiss-Prot Function]