

Product datasheet for **MG204047**

Endog (NM_007931) Mouse Tagged ORF Clone

Product data:

Product Type:	Expression Plasmids
Product Name:	Endog (NM_007931) Mouse Tagged ORF Clone
Tag:	TurboGFP
Symbol:	Endog
Mammalian Cell Selection:	Neomycin
Vector:	pCMV6-AC-GFP (PS100010)
E. coli Selection:	Ampicillin (100 ug/mL)
ORF Nucleotide Sequence:	>MG204047 representing NM_007931 Red=Cloning site Blue=ORF Green=Tags(s)

TTTTGTAATACGACTCACTATAGGGCGGCCGGAATTCGTCGACTGGATCCGGTACCGAGGAGATCTGCC
GCC**CGATCGCC**

ATGCGCGCGTGCGGGCCGGCTGACCCTAGCGCTGGGCGCGGGCTGGGCGCCGCGGCAGAGCATTGGC
GGCGGCGGGAGGGCAAAGCGCCGGGGCTGCTGGGCCGAGTGCCATTGTTGCCGGTGGTCGCGGCCGATCT
TCCCGCGCTGCCGGGGGACCGCGGGCGGCACCGGGAACTGGCCAAGTACGGGCTGCCCGCGTGGCG
CAGCTCCGGAGCCGCGAGTCTACGTGCTTAGCTACGACCCGCGCACGCGGTGCGCTCTGGGTGTTGG
AGCAGCTGAGGCCAGAGCGGCTCCGTGGCGACGGGGACCGTAGCGCTGCGACTCCGCGAGGATGACTC
TGTGCACGCGTACCACCGCGCCACCAATGCGGACTACCGCGCAGTGGCTTTGACCGCGCCATTTGGCC
GCCGCCGCAACCACCGCTGGAGTCAGCGGGCCATGGACGACACCTTCTACCTGAGCAACGTAGCGCCTC
AGGTGCCACACCTCAACCAGAATGCCTGGAACAACCTTGAGAGGTACAGCCGAGCTTGACGCGAACTTA
CCAAAATGTCTATGTCTGCACGGGGCCGCTTTTCCTGCCAGGACCGAGGCTGATGGGAAGTCTATGTG
AAGTACCAGGTTATTGGGAAGAACCACGTGGCAGTGCCACACACTTCTCAAGGTGCTGATCCTGGAGG
CAGCCGGTGGCAGATCGAGCTACGTTCTACGTGATGCCCAATGCCCGTGGATGAGACCATCCCTCT
GGAGCGGTTCTGGTCCCATCGAGAGCATCGAGCGGGCCTCGGATTGCTCTTCGTGCCCAATATTCTG
GCTCGAGCTGAAACCTCAAGGCTACTGCTGGCAGCAAG

AG**CGGACCG**ACGCGTACGCGGCCGCTCGAG - GFP Tag - GTTTAA



[View online »](#)

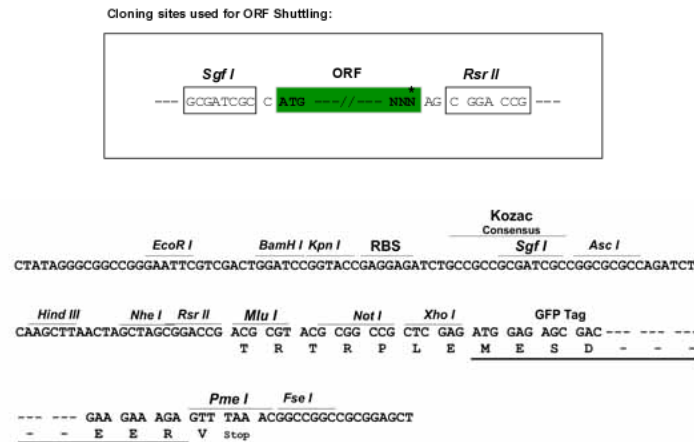
Protein Sequence: >MG204047 representing NM_007931
 Red=Cloning site Green=Tags(s)

MRALRAGLTLALGAGLGAAAEHWRRREGKAPGLLGRVPLLPVVAADLPALPGGPAGGTGELAKYGLPGVA
 QLRRESYVLSYDPRTRGALWVLEQLRPERLRGDGDRSACDFREDDSVHAYHRATNADYRGSFDRGH
 LA
 AAANHRWSQRAMDDTFYLSNVAPQVPHLNQNAWNNLERYSRSLTRTYQNVVYVCTGPLFLPRTEADGKSYV
 KYQVIGKNHVAVPTHFFKVLILEAAGGQIELRSYVMPNAPVDETIPLERFLVPIESIERASGLLFVFNIL
 ARAGNLKAITAGSK

SGP**TRRRLE** - GFP Tag - V

Restriction Sites: SgfI-RsrII

Cloning Scheme:



Plasmid Map:



ACCN: NM_007931

ORF Size: 882 bp

OTI Disclaimer:	The molecular sequence of this clone aligns with the gene accession number as a point of reference only. However, individual transcript sequences of the same gene can differ through naturally occurring variations (e.g. polymorphisms), each with its own valid existence. This clone is substantially in agreement with the reference, but a complete review of all prevailing variants is recommended prior to use. More info
OTI Annotation:	This clone was engineered to express the complete ORF with an expression tag. Expression varies depending on the nature of the gene.
Components:	The ORF clone is ion-exchange column purified and shipped in a 2D barcoded Matrix tube containing 10ug of transfection-ready, dried plasmid DNA (reconstitute with 100 ul of water).
Reconstitution Method:	<ol style="list-style-type: none">1. Centrifuge at 5,000xg for 5min.2. Carefully open the tube and add 100ul of sterile water to dissolve the DNA.3. Close the tube and incubate for 10 minutes at room temperature.4. Briefly vortex the tube and then do a quick spin (less than 5000xg) to concentrate the liquid at the bottom.5. Store the suspended plasmid at -20°C. The DNA is stable for at least one year from date of shipping when stored at -20°C.
RefSeq:	NM_007931.1 , NP_031957.1
RefSeq Size:	1032 bp
RefSeq ORF:	885 bp
Locus ID:	13804
UniProt ID:	O08600
Cytogenetics:	2 B
Gene Summary:	Cleaves DNA at double-stranded (DG)n.(DC)n and at single-stranded (DC)n tracts. In addition to deoxyribonuclease activities, also has ribonuclease (RNase) and RNase H activities. Capable of generating the RNA primers required by DNA polymerase gamma to initiate replication of mitochondrial DNA (By similarity).[UniProtKB/Swiss-Prot Function]