

Product datasheet for **MG204038**

Rps6kb2 (BC066842) Mouse Tagged ORF Clone

Product data:

Product Type:	Expression Plasmids
Product Name:	Rps6kb2 (BC066842) Mouse Tagged ORF Clone
Tag:	TurboGFP
Symbol:	Rps6kb2
Synonyms:	S6K2, 70kDa
Mammalian Cell Selection:	Neomycin
Vector:	pCMV6-AC-GFP (PS100010)
E. coli Selection:	Ampicillin (100 ug/mL)
ORF Nucleotide Sequence:	>MG204038 representing BC066842 Red=Cloning site Blue=ORF Green=Tags(s)

TTTTGTAATACGACTCACTATAGGGCGCCGGGAATTCGTCGACTGGATCCGGTACCGAGGAGATCTGCC
GCC**CGATCGCC**

ATGGCGGCCGTATTTGATTTAGACTTGGAGACCGAGGAAGGGAGCGAGGGCGAGGGCGAACC GGAGTTCA
GCCCTGCGGACGTGTGTCCCTTGGCGAATTAAGGGCTGCTGGCCTGGAGACAGTGGGACACTATGAAGA
AGTAGAGCTGACAGAGAGCAGCGTGAACCTGGGTCTGAGCGCAACGGGCCCACTGCTTTGAGCTACTG
AGTGTACTGGCAAGGGGGCTATGGCAAGGTGTTCCAGGTGAGAAAAGTGAAGGCACCAACTTGGGAA
AAATATATGCCATGAAGGTCTTAAGGAAGGCCAAGATTGTATGCAGTGCCAAGGACACAGCCATACCCG
GGCTGAGAGGAACATTCTAGAATCTGTGAAGCATCCCTTCATTGTAGAAGTGGCCTATGCTTCCAGACA
GGTGGCAAACCTACCTCATCCTGGAGTGCCTCAGTGGTGGTGGAGCTCTTACACATCTTGGAGGAAAG
GCATCTTCTGGAAGACACAGCCTGCTTACCTGGCAGAGATCACACTAGCCCTGGGCCATCTCCATTC
CCACGGCATCATCTACCGGGACCTCAAGCCTGAGAACATCATGCTCAGCAGCCAGGGCCACATCAAAGT
ACAGACTTTGGACTTTGCAAGGAGTCCATTCATGAGGGTGTATCACTCACACCTTCTGTGGCACCATTG
AGTACATGGCCCCAGAGATTCTAGTGCGCACTGGTCACAACCGGGCAGTGGACTGGTGGAGCCTGGGAGC
CCTGATGTACGACATGCTCACTGGATCGCAAGTCCAGCTTCTTGGGCGCAGGGTGGTGTGGGGAGA
TCCCTTCCAGTTGGGGCAGGACTGGGTGGGAGGACCC

ACGCGTACGCGGCCGCTCGAG - GFP Tag - GTTTAA



[View online »](#)

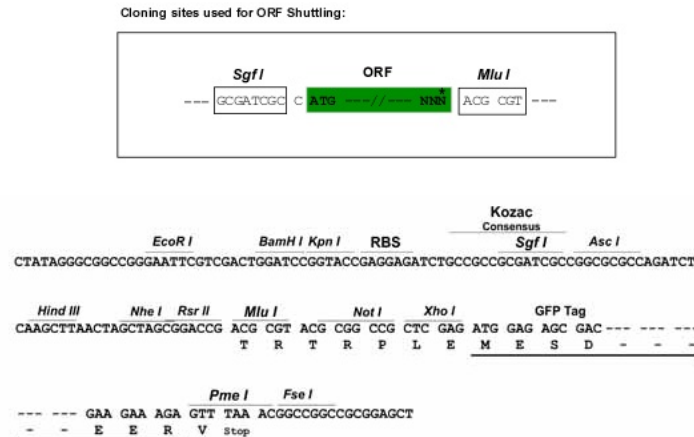
Protein Sequence: >MG204038 representing BC066842
Red=Cloning site Green=Tags(s)

MAAVFDLLETEEGSEGEPEFSPADVCPGLGELRAAGLETVGHYEEVELTESSVNLGPERNGPHCFELL
 SVLGKGGYGKVFQVRKVQGTNLGKIYAMKVLRKAKIVCSAKDTAHTRAERNILESVKHPFIVELAYAFQT
 GGKLYLILECLSGGELFTHLEREGIFLEDTACFYLAEITLALGHLHSHGIYRDLPENIMLSSQGHKIL
 TDFGLCKESIHEGAIHTHFCGTIEYMAPEILVRTGHNRAVDWWSL GALMYDMLTGSASPASLGAGWVLGR
 SLPGWGRTGWEDP

TRTRPLE - GFP Tag - V

Restriction Sites: SgfI-MluI

Cloning Scheme:



ACCN: BC066842

ORF Size: 879 bp

OTI Disclaimer: The molecular sequence of this clone aligns with the gene accession number as a point of reference only. However, individual transcript sequences of the same gene can differ through naturally occurring variations (e.g. polymorphisms), each with its own valid existence. This clone is substantially in agreement with the reference, but a complete review of all prevailing variants is recommended prior to use. [More info](#)

OTI Annotation: This clone was engineered to express the complete ORF with an expression tag. Expression varies depending on the nature of the gene.

Components: The ORF clone is ion-exchange column purified and shipped in a 2D barcoded Matrix tube containing 10ug of transfection-ready, dried plasmid DNA (reconstitute with 100 ul of water).

Reconstitution Method:

1. Centrifuge at 5,000xg for 5min.
2. Carefully open the tube and add 100ul of sterile water to dissolve the DNA.
3. Close the tube and incubate for 10 minutes at room temperature.
4. Briefly vortex the tube and then do a quick spin (less than 5000xg) to concentrate the liquid at the bottom.
5. Store the suspended plasmid at -20°C. The DNA is stable for at least one year from date of shipping when stored at -20°C.

RefSeq: [BC066842](#), [AAH66842](#)

RefSeq Size: 2105 bp

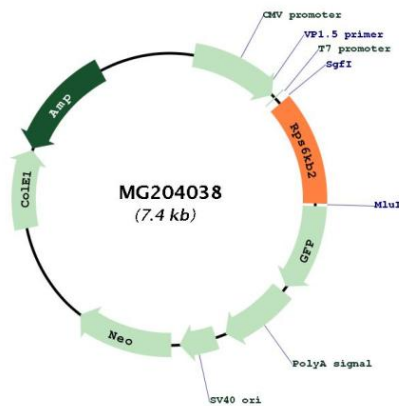
RefSeq ORF: 881 bp

Locus ID: 58988

Cytogenetics: 19 A

Gene Summary: Phosphorylates specifically ribosomal protein S6. Seems to act downstream of mTOR signaling in response to growth factors and nutrients to promote cell proliferation, cell growth and cell cycle progression in an alternative pathway regulated by MEAK7.[UniProtKB/Swiss-Prot Function]

Product images:



Circular map for MG204038