

## Product datasheet for **MG204036**

### **Fcgr2b (BC038070) Mouse Tagged ORF Clone**

#### Product data:

|                           |  |
|---------------------------|--|
| Product Type:             | Expression Plasmids  |
| Product Name:             | Fcgr2b (BC038070) Mouse Tagged ORF Clone                                   |
| Tag:                      | TurboGFP   |
| Symbol:                   | Fcgr2b   |
| Synonyms:                 | CD32, FcgRII, Fc[g]RII   |
| Mammalian Cell Selection: | Neomycin   |
| Vector:                   | pCMV6-AC-GFP (PS100010)  |
| E. coli Selection:        | Ampicillin (100 ug/mL)   |
| ORF Nucleotide Sequence:  | >MG204036 representing BC038070<br>Red=Cloning site Blue=ORF Green=Tags(s) |

TTTTGTAATACGACTCACTATAGGGCGGCCGGAATTCGTCGACTGGATCCGGTACCGAGGAGATCTGCC  
GCC**CGATCGCC**

ATGGGAATCCTGCCGTTCTACTGATCCCCATGGAGAGCAACTGGACTGTTCATGTGTTCTCACGGACTT  
TGTGCCATATGCTACTGTGGACAGCCGTGCTAAATCTTGCTGCTGGACTCATGATCTTCCAAAGGCTGT  
GGTCAAACCTCGAGCCCCGTGGATCCAGGTGCTCAAGGAAGACACGGTGACTGACATGCGAAGGGACC  
CACAACCCTGGAACTCTTCTACCCAGTGGTCCACAATGGGAGGTCCATCCGGAGCCAGGTCCAAGCCA  
GCTACACGTTTAAAGGCCACAGTCAATGACAGTGGAGAATATCGGTGTCAAATGGAGCAGACCCGCTCAG  
CGACCCTGTAGATCTGGGAGTGATTTCTGACTGGCTGCTGCTCCAGACCCTCAGCTGGTGTCTTCTGGAA  
GGGAAAACCATCACGCTAAGGTGCCATAGCTGGAGGAACAAACCACTGAACAGGATCTCGTTCTTCCATA  
ATGAAAAATCCGTGAGGTATCATCACTACAGTAGTAATTTCTCTATCCAAAAGCCAACCACAGTCACAG  
TGGGGACTACTACTGCAAAGGAAGTCTAGGAAGGACACAGCACCAGTCCAAGACTGTCACCATCACTGTC  
CAAGGGCCCAAGTCCAGCAGGTCTTTACCAGTATTGACAATTGTGGCTGCTGCTACTGGGATTGCTGTCG  
CAGCCATTGTTATTATCCTAGTATCCTTGGTCTATCTCAAGAAAAACAGGTTCCAGACAATCCTCCTGA  
TCTGGAAGAAGCTGCCAAAACCTGAGGCTGAGAATACGATCACCTACTCACTTCTCAAGCATCCCAGAACCC  
CTGGATGAAGAAACAGAGCATGATTACCAGAACCACATT

**ACGCGT**ACGCGGCCGCTCGAG - GFP Tag - GTTTAA



[View online »](#)

**Protein Sequence:** >MG204036 representing BC038070  
 Red=Cloning site Green=Tags(s)

MGILPFLIPMESNWTVHVFSRTLCHMLLWTAVLNLAAGTHDLPKAVVKLEPPWIQVLKEDTVTLTCEGT  
 HNPGNSSTQWFHNGRSIRSQVQASYTFKATVNDSGEYRCQMEQTRLSDPVDLGVISDWLLLQTPQLVFLE  
 GETITLRCHSWRNKPLNRISFFHNEKSVRYHHYSSNFSIPKANHSHSGDYICKGSLGRTQHQSKTVTITV  
 QGPKSSRSLPVL TIVA AVTGI A VAA I V I I L V S L V Y L K K K Q V P D N P P D L E E A A K T E A E N T I T Y S L L K H P E A  
 L D E E T E H D Y Q N H I

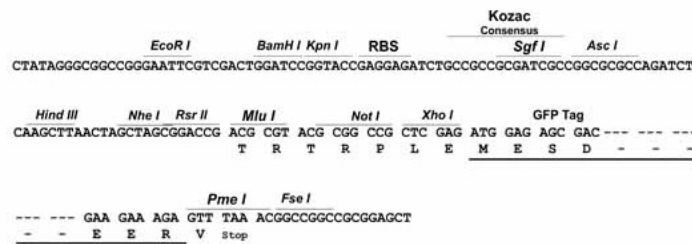
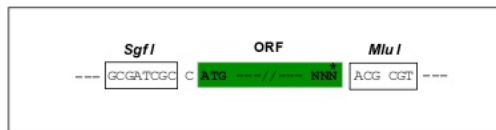
TRTRPLE - GFP Tag - V

**Chromatograms:** [https://cdn.origene.com/chromatograms/ja3646\\_e04.zip](https://cdn.origene.com/chromatograms/ja3646_e04.zip)

**Restriction Sites:** SgfI-MluI

**Cloning Scheme:**

Cloning sites used for ORF Shuttling:



**ACCN:** BC038070

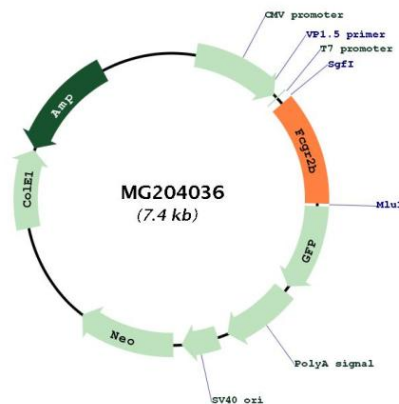
**ORF Size:** 879 bp

**OTI Disclaimer:** Due to the inherent nature of this plasmid, standard methods to replicate additional amounts of DNA in E. coli are highly likely to result in mutations and/or rearrangements. Therefore, OriGene does not guarantee the capability to replicate this plasmid DNA. Additional amounts of DNA can be purchased from OriGene with batch-specific, full-sequence verification at a reduced cost. Please contact our customer care team at [custsupport@origene.com](mailto:custsupport@origene.com) or by calling 301.340.3188 option 3 for pricing and delivery.

The molecular sequence of this clone aligns with the gene accession number as a point of reference only. However, individual transcript sequences of the same gene can differ through naturally occurring variations (e.g. polymorphisms), each with its own valid existence. This clone is substantially in agreement with the reference, but a complete review of all prevailing variants is recommended prior to use. [More info](#)

|                               |  |
|-------------------------------|--|
| <b>OTI Annotation:</b>        | This clone was engineered to express the complete ORF with an expression tag. Expression varies depending on the nature of the gene.   |
| <b>Components:</b>            | The ORF clone is ion-exchange column purified and shipped in a 2D barcoded Matrix tube containing 10ug of transfection-ready, dried plasmid DNA (reconstitute with 100 ul of water).   |
| <b>Reconstitution Method:</b> | <ol style="list-style-type: none"> <li>1. Centrifuge at 5,000xg for 5min.</li> <li>2. Carefully open the tube and add 100ul of sterile water to dissolve the DNA.</li> <li>3. Close the tube and incubate for 10 minutes at room temperature.</li> <li>4. Briefly vortex the tube and then do a quick spin (less than 5000xg) to concentrate the liquid at the bottom.</li> <li>5. Store the suspended plasmid at -20°C. The DNA is stable for at least one year from date of shipping when stored at -20°C.</li> </ol>  |
| <b>RefSeq:</b>                | <u><a href="#">BC038070</a></u> , <u><a href="#">AAH38070</a></u>  |
| <b>RefSeq Size:</b>           | 1407 bp  |
| <b>RefSeq ORF:</b>            | 881 bp   |
| <b>Locus ID:</b>              | 14130  |
| <b>Cytogenetics:</b>          | 1 78.02 cM   |
| <b>Gene Summary:</b>          | Receptor for the Fc region of complexed immunoglobulins gamma. Low affinity receptor. Involved in a variety of effector and regulatory functions such as phagocytosis of antigen-antibody complexes from the circulation and modulation of antibody production by B-cells. Isoform IIB1 and isoform IIB1' form caps but fail to mediate endocytosis or phagocytosis. Isoform IIB2 can mediate the endocytosis of soluble immune complexes via clathrin-coated pits. Isoform IIB1 and isoform IIB2 can down-regulate B-cell, T-cell, and mast cell activation when coaggregated to B-cell receptors for AG (BCR), T-cell receptors for AG (TCR), and Fc receptors, respectively.[UniProtKB/Swiss-Prot Function] |

### Product images:



Circular map for MG204036