

## Product datasheet for **MG204018**

### Igfbp3 (BC058261) Mouse Tagged ORF Clone

#### Product data:

Product Type: Expression Plasmids  
 Product Name: Igfbp3 (BC058261) Mouse Tagged ORF Clone  
 Tag: TurboGFP  
 Symbol: Igfbp3  
 Synonyms: IGFBP-3, IGfbp3  
 Mammalian Cell Selection: Neomycin  
 Vector: pCMV6-AC-GFP (PS100010)  
 E. coli Selection: Ampicillin (100 ug/mL)  
 ORF Nucleotide Sequence: >MG204018 representing BC058261  
 Red=Cloning site Blue=ORF Green=Tags(s)

TTTTGTAATACGACTCACTATAGGGCGGCCGGAATTCGTCGACTGGATCCGGTACCGAGGAGATCTGCC  
 GCC**CGATCGCC**

ATGCATCCCGCGGCCCGCGCTCTGGGCGGCTGCGCTCACTGCCCTCACTCTGCTCCGCGGACCGCCGG  
 TGGCGGAGCTGGCGGGGCGGGTGGGCGGGCCCCGTGGTGCCTGCGAACCGTGCACGCGCGTGC  
 GCTGTCCAGTGCAGCCTCCGCCACTGCGCCCGTGCACGGAGCTGGTGCAGAGCCCGGCTGCGGC  
 TGCTGCCTGACTTGCAGCTGCGGAAGGCGACGCTGCGGCGTCTACACGGAGCGCTGTGGACCGGCC  
 TCCGCTGCCAGCCGCGGCCCGGAGCAGTACCCGCTGAGGGCGTCTGAATGGCCGCGGTTCTGCGC  
 CAACGCCAGCGCTGCAGGCAGCCTAAGCACCTACCTCCCCTCCCAACCTGCTCCAGGAAACATCAGTGAG  
 TCCGAGGAGGAGCACAATGCTGGGAGTGTGAAAGCCAGTTGTCCCCAGCACACACCGAGTGACCGATT  
 CCAAGTTCATCCACTCCATGCCAAGATGGATGTCATCAAAAAGGCCACGCCAGGGACAGCCAGCGCTA  
 CAAAGTTGACTATGAGTCTCAAAGCACAGACACCCAGAATTCTCCTCCGAGTCTAAGCGGGAGACAGAA  
 TACGGTCCCTGCCGAGAGAAATGGAGGACACACTGAATCATCTGAAGTTCTCAATGTGCTGAGTCCCA  
 GAGGCGTCCACATCCCAAAGTGTGACAAGAAGGGTCTATAAGAAGAAGCAGTGCCGCCCTTCAAAGG  
 CAGAAAGCGGGGCTTCTGCTGGTGTGTGGACAAGTATGGGCAGCCCTTCCAGGCTACGACACCAAGGGG  
 AAAGACGACGTACATTGCCTCAGCGTGCAGAGCCAG

AC**CGGCCCGC**TCGAG - GFP Tag - GTTTAA



[View online »](#)

**Protein Sequence:** >MG204018 representing BC058261  
Red=Cloning site Green=Tags(s)

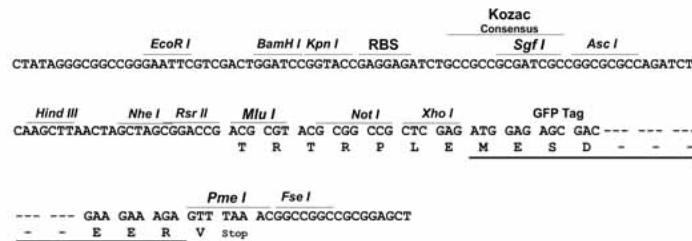
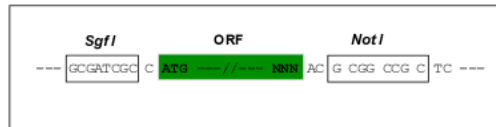
MHPARPALWAAAL TAL TLLRGPPVARAGAVGAGPVVRCEPCDARALSQCAPPPTAPACTELVREPGCG  
 CCLT CALREGDACGVYTERCGTGLRCQPRPAEQYPLRALLNGRGCANASAAGSLSTYLPSPAPGNISE  
 SEEEHNAGSVESQVVPSTHRVTDSKFHPLHAKMDVIKKGHARDSQRYKVDYESQSTDTQNF SSESKRETE  
 YGPCRREMEDTLNHLKFLNLVSPRGVHIPNCDKKG FYKKKQCRPSKGRKRGFCWCV D KYGQPLPGYDTKG  
 KDDVHCLSVQSQ

TRPLE - GFP Tag - V

**Restriction Sites:** SgfI-NotI

**Cloning Scheme:**

Cloning sites used for ORF Shuttling:



**ACCN:** BC058261

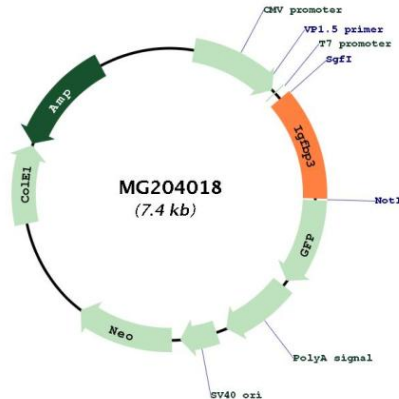
**ORF Size:** 878 bp

**OTI Disclaimer:** Due to the inherent nature of this plasmid, standard methods to replicate additional amounts of DNA in E. coli are highly likely to result in mutations and/or rearrangements. Therefore, OriGene does not guarantee the capability to replicate this plasmid DNA. Additional amounts of DNA can be purchased from OriGene with batch-specific, full-sequence verification at a reduced cost. Please contact our customer care team at [custsupport@origene.com](mailto:custsupport@origene.com) or by calling 301.340.3188 option 3 for pricing and delivery.

The molecular sequence of this clone aligns with the gene accession number as a point of reference only. However, individual transcript sequences of the same gene can differ through naturally occurring variations (e.g. polymorphisms), each with its own valid existence. This clone is substantially in agreement with the reference, but a complete review of all prevailing variants is recommended prior to use. [More info](#)

**OTI Annotation:** This clone was engineered to express the complete ORF with an expression tag. Expression varies depending on the nature of the gene.

<b>Components:</b>	The ORF clone is ion-exchange column purified and shipped in a 2D barcoded Matrix tube containing 10ug of transfection-ready, dried plasmid DNA (reconstitute with 100 ul of water).
<b>Reconstitution Method:</b>	<ol style="list-style-type: none"> <li>1. Centrifuge at 5,000xg for 5min.</li> <li>2. Carefully open the tube and add 100ul of sterile water to dissolve the DNA.</li> <li>3. Close the tube and incubate for 10 minutes at room temperature.</li> <li>4. Briefly vortex the tube and then do a quick spin (less than 5000xg) to concentrate the liquid at the bottom.</li> <li>5. Store the suspended plasmid at -20°C. The DNA is stable for at least one year from date of shipping when stored at -20°C.</li> </ol>
<b>RefSeq:</b>	<u>BC058261, AAH58261</u>
<b>RefSeq Size:</b>	2432 bp
<b>RefSeq ORF:</b>	878 bp
<b>Locus ID:</b>	16009
<b>Cytogenetics:</b>	11 4.75 cM
<b>Gene Summary:</b>	IGF-binding proteins prolong the half-life of the IGFs and have been shown to either inhibit or stimulate the growth promoting effects of the IGFs on cell culture. They alter the interaction of IGFs with their cell surface receptors. Also exhibits IGF-independent antiproliferative and apoptotic effects mediated by its receptor TMEM219/IGFBP-3R.[UniProtKB/Swiss-Prot Function]

**Product images:**


Circular map for MG204018