

Product datasheet for **MG204002**

Plpp6 (NM_028922) Mouse Tagged ORF Clone

Product data:

Product Type: Expression Plasmids
 Product Name: Plpp6 (NM_028922) Mouse Tagged ORF Clone
 Tag: TurboGFP
 Symbol: Plpp6
 Synonyms: 4932443D16Rik; Ppapdc2
 Mammalian Cell Selection: Neomycin
 Vector: pCMV6-AC-GFP (PS100010)
 E. coli Selection: Ampicillin (100 ug/mL)
 ORF Nucleotide Sequence: >MG204002 representing NM_028922
 Red=Cloning site Blue=ORF Green=Tags(s)

TTTTGTAATACGACTCACTATAGGGCGGCCGGAATTCGTCGACTGGATCCGGTACCGAGGAGATCTGCC
 GCC**CGATCGCC**

ATGCCGAGCCCCGGAGGACCATCGAGGGACGGCCGCTGGGCTCCTCGGGCGGAAGCAGCGTCCCGGGCA
 GCCCGGCCACGGCGGTGGCAGCGGGCGGCAGGTTTCGAGTTCCAATCGCTGCTGAACTGCCGCGCGGG
 CGCGGACCCCGCTGCGCTCGGCTGCGCGCGTCCGACAGCCGGTGCACCGGCGCGGCTCCTTCCCCTG
 GCCGCTCGGGCCCCGACAAGCAGCCCCGGCCCCGCGCGGAGGACGCCCGCATGAACCTGAACCCGT
 CCTTCTGGGCATCGCCCTGCGCTCCCTGCTGGCCATCGACCTGTGGCTGTCCAAGAAGCTGGGGGTGTG
 TGCTGGGGAGAGCTCGGCCTGGGGCAGCGTGGCGCCCTGATGAAGCTGCTGGAGATCTCAGGGCATGGC
 ATCCCCTGGCTGCTGGGCACCCTCTACTGCCTGCTTAGGAGCGACAGCTGGGCCGGCGCGAAGTGTGA
 TGAACCTGCTCTTCGCCCTGCTGTTGGACCTGCTGCTGGTAGCTGTGATTAAGGGCTGGTCCGCAGGCG
 CCGACCCGCGCACAATCAAAAGGACATGTTTTTACCCTCTCGGTGGACAGGTAATCCTTCCCTCGGGC
 CACGCCACGAGGGCCGCTGCTGCGGGTTTATCCTAAACCACCTGGTACTGGCCATTCACCTGAGGG
 TGCTGGTGGTCTGTGGGCTTCGCTCTGGGTCTCTAGGGTCATGCTCGGGCGGCACAACGTCACTGA
 TGTGGCTTTTGGCTTTTCTGGGCTACATGCAGTACAGCATTGTGGATTATTGCTGGCTGCACCCAC
 AATGTTCCAGTTCTTTTGTACTGTGGAATCAACAG

ACGCGTACGCGGCCGCTCGAG - GFP Tag - GTTTAA



[View online »](#)

Protein Sequence: >MG204002 representing NM_028922
 Red=Cloning site Green=Tags(s)

MPSPRRTIEGRPLGSSGGSSVPGSPAHHGGGSGGGRFEFQSLNCRAGADPACARLRASDSPVHRRGSFPL
 AASGPAQAAPAPPEDARMNLNPSFLGIALRSLAIDLWLSKLLGVCAGESSAWGSVRPLMKLLEISGHG
 IPWLLGTLYCLLRSDSWAGREVLNMLLFALLDLLLVAVIKGLVRRRRPAHNQKDMFFTLSDRYSPSG
 HATRAALVSRFILNHLVLAIPLRVLVVLWAFVLGLSRVMLGRHNVTDAFGFFLGYMQYSIVDYCWLSPH
 NVPVLFVLLWNQQ

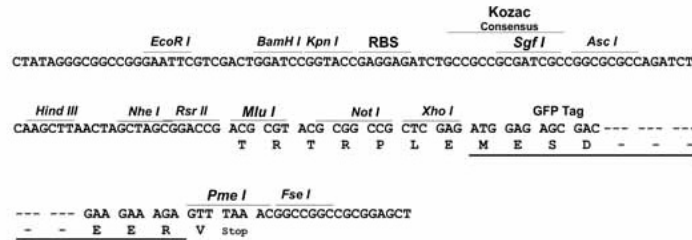
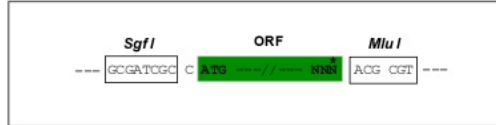
TRTRPLE - GFP Tag - V

Restriction Sites:

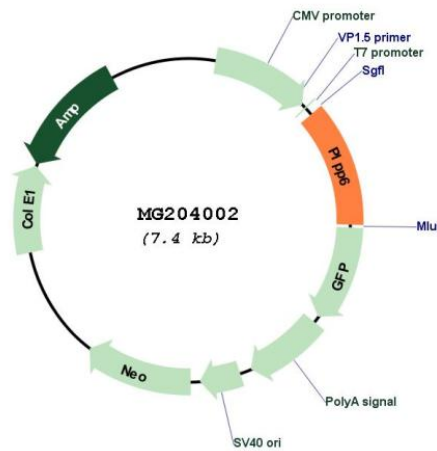
SgfI-MluI

Cloning Scheme:

Cloning sites used for ORF Shuttling:



Plasmid Map:



ACCN: NM_028922

ORF Size: 876 bp

OTI Disclaimer:	The molecular sequence of this clone aligns with the gene accession number as a point of reference only. However, individual transcript sequences of the same gene can differ through naturally occurring variations (e.g. polymorphisms), each with its own valid existence. This clone is substantially in agreement with the reference, but a complete review of all prevailing variants is recommended prior to use. More info
OTI Annotation:	This clone was engineered to express the complete ORF with an expression tag. Expression varies depending on the nature of the gene.
Components:	The ORF clone is ion-exchange column purified and shipped in a 2D barcoded Matrix tube containing 10ug of transfection-ready, dried plasmid DNA (reconstitute with 100 ul of water).
Reconstitution Method:	<ol style="list-style-type: none">1. Centrifuge at 5,000xg for 5min.2. Carefully open the tube and add 100ul of sterile water to dissolve the DNA.3. Close the tube and incubate for 10 minutes at room temperature.4. Briefly vortex the tube and then do a quick spin (less than 5000xg) to concentrate the liquid at the bottom.5. Store the suspended plasmid at -20°C. The DNA is stable for at least one year from date of shipping when stored at -20°C.
RefSeq:	NM_028922.3 , NP_083198.1
RefSeq Size:	2880 bp
RefSeq ORF:	879 bp
Locus ID:	74411
UniProt ID:	Q9D4F2
Cytogenetics:	19 C1
Gene Summary:	Phosphatase that dephosphorylates presqualene diphosphate (PSDP) into presqualene monophosphate (PSMP), suggesting that it may be indirectly involved in innate immunity. PSDP is a bioactive lipid that rapidly remodels to presqualene monophosphate PSMP upon cell activation. Displays diphosphate phosphatase activity with a substrate preference for PSDP > FDP > phosphatidic acid (By similarity).[UniProtKB/Swiss-Prot Function]