

Product datasheet for **MG203964**

1110004E09Rik (NM_026502) Mouse Tagged ORF Clone

Product data:

Product Type: Expression Plasmids
 Product Name: 1110004E09Rik (NM_026502) Mouse Tagged ORF Clone
 Tag: TurboGFP
 Symbol: 1110004E09Rik
 Mammalian Cell Selection: Neomycin
 Vector: pCMV6-AC-GFP (PS100010)
 E. coli Selection: Ampicillin (100 ug/mL)
 ORF Nucleotide Sequence: >MG203964 representing NM_026502
 Red=Cloning site Blue=ORF Green=Tags(s)

TTTTGTAATACGACTCACTATAGGGCGGCCGGAATTCGTCGACTGGATCCGGTACCGAGGAGATCTGCC
 GCC**CGATCGCC**

ATGGTTGTGCTGCACGTGAAGAGAGGGCAGCAGAGCCAGTTCTTACTGCAGGGCCTCCGGGAGCACGGAGC
 TGGAAAGAGCTCACGGCGCAGGTGGCCCGCTCTACAACGGCGGCTGAAGGTGCACCGGCTCTGCTCAGA
 GATGGAGGAGCTGGCAGAACACGGTGTCTTTCTGCACCCTAATATGCAAGGGCTGACTGATGAGCAGATC
 GAAGAGCTGAAACTGAAGGACGAGTGGGGGAGAAGTGTGTGCCAGTGGAGGGTCTGTTTTACGAAGG
 ACGAGATCGGGCGGAGGAACGGCAAGCTCCAAATGAGAAAATGAAGCAGGTTTTAAAGAAGACCGTGA
 AGAAGCCAAGGCGATAGTGTCTAAGAAACAAGTAGAAGCTGGAGTCTTTGTTACTATGGAGATGGTGAAA
 GATGCCTTGACCAGCTTCGAGGTGCGGTATGATCGTTTATCCCATGGGGCTGCCACCATACGATCCTA
 TCCGGATGGAATTTGAAAATAAAGAAGATTTGTCAGGAACTCAGGCAGCCCTCGAAGTCATCCAGGAGTC
 GGAGGCACAGCTGTGGTGGGCCCAAGGAGCTGAGAAGAACAAGAAGCTTTCTGACTATGTGGGGAAA
 AATGAGAAAACAAAATCATCGTCAAGATCCAGCAGAGAGGGCAGGGTCCCCAGCCCGGGAGCCTGTCA
 TCAGCAGTGAAGAACAAGCAGCTGATGCTGTTCTACCACAGAAGACAGGAGGAGCTCAAGAACTGGA
 AGAGAATGACGATGACTCCTGTCTGAATCCCCGTGGGCTGACAACACGGCTTTGAAAAGACATTTTCAT
 GCGTAAAAGACATAAAGTGGCGGCCAGG

ACGCGTACGCGGCCGCTCGAG - GFP Tag - GTTTAA



[View online »](#)

Protein Sequence: >MG203964 representing NM_026502
 Red=Cloning site Green=Tags(s)

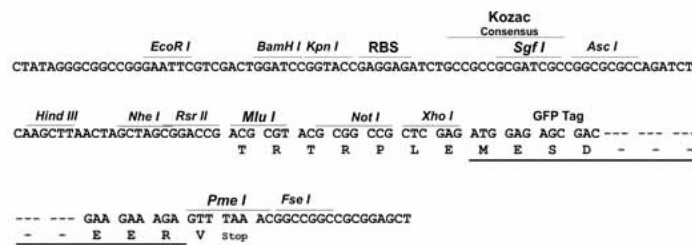
MVVLHVKRGDESQFLQAPGSTLEELTAQVARVYNGRLKVHRLCSEMEELAEHGVFLHPNMQGLTDEQI
 EELKLDKDEWGEKCVPSGGSVFTKDEIGRRNGQAPNEKMKQVLKKTVEEAKAIVSKKQVEAGVFTMEMVK
 DALDQLRGAVMIVYPMGLPPYDPIRMEFENKEDLSGTQAALVIEQESAEQLWAAKELRRTKKLSDYVVGK
 NEKTKIIVKIQQRGQGAPAREPVISSEEHKQLMLFYHRRQEELKLEENDDDDSLNSPWADNTALKRHFH
 GVKDIKWRPR

TRTRPLE - GFP Tag - V

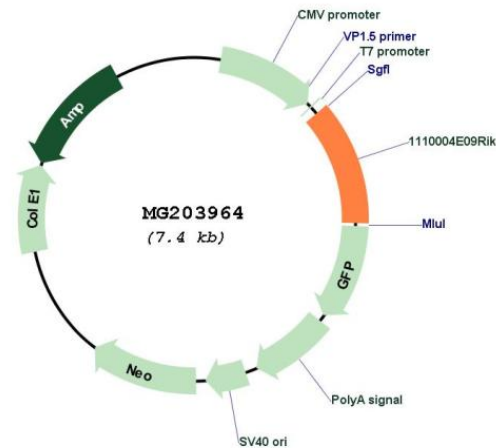
Restriction Sites: SgfI-MluI

Cloning Scheme:

Cloning sites used for ORF Shutting:



Plasmid Map:



ACCN: NM_026502

ORF Size: 870 bp

OTI Disclaimer:	The molecular sequence of this clone aligns with the gene accession number as a point of reference only. However, individual transcript sequences of the same gene can differ through naturally occurring variations (e.g. polymorphisms), each with its own valid existence. This clone is substantially in agreement with the reference, but a complete review of all prevailing variants is recommended prior to use. More info
OTI Annotation:	This clone was engineered to express the complete ORF with an expression tag. Expression varies depending on the nature of the gene.
Components:	The ORF clone is ion-exchange column purified and shipped in a 2D barcoded Matrix tube containing 10ug of transfection-ready, dried plasmid DNA (reconstitute with 100 ul of water).
Reconstitution Method:	<ol style="list-style-type: none">1. Centrifuge at 5,000xg for 5min.2. Carefully open the tube and add 100ul of sterile water to dissolve the DNA.3. Close the tube and incubate for 10 minutes at room temperature.4. Briefly vortex the tube and then do a quick spin (less than 5000xg) to concentrate the liquid at the bottom.5. Store the suspended plasmid at -20°C. The DNA is stable for at least one year from date of shipping when stored at -20°C.
RefSeq:	NM_026502.1 , NP_080778.1
RefSeq Size:	1139 bp
RefSeq ORF:	873 bp
Locus ID:	68001
UniProt ID:	Q8BL95
Cytogenetics:	16 C3.3
Gene Summary:	Plays a role in motile cilium function, possibly by acting on outer dynein arm assembly. Seems to be important for initiation rather than maintenance of cilium motility. Required for correct positioning of cilia at the apical cell surface, suggesting an additional role in the planar cell polarity (PCP) pathway. May suppress canonical Wnt signaling activity.[UniProtKB/Swiss-Prot Function]