

Product datasheet for **MG203959**

D16Ert472e (NM_025967) Mouse Tagged ORF Clone

Product data:

Product Type: Expression Plasmids
Product Name: D16Ert472e (NM_025967) Mouse Tagged ORF Clone
Tag: TurboGFP
Symbol: D16Ert472e
Synonyms: 1700010I10Rik; 2310009O17Rik; E330003K22Rik; Eurl
Mammalian Cell Selection: Neomycin
Vector: pCMV6-AC-GFP (PS100010)
E. coli Selection: Ampicillin (100 ug/mL)
ORF Nucleotide Sequence: >MG203959 representing NM_025967
 Red=Cloning site Blue=ORF Green=Tags(s)

TTTTGTAATACGACTCACTATAGGGCGGCCGGAATTCGTCGACTGGATCCGGTACCGAGGAGATCTGCC
 GCC**CGATCGCC**

ATGAACGAAGAGGAGCAGTTTGAAGCATTGACTTGAATGATGACAACATTTGCAGTGTTTGTAACTGG
 GAACAGACAAAGACACACTCTCCTTCTGCCACATTTGCTTCGAGCTAAATCTCGAGGGAGTGCCAAAGTC
 GAATCTTTTACACACAAATCAGTGAGAGGCCATAAAGACTGCTTTGAAAAATACCATTTAATAGCAAAC
 CAGGATTGTTCTCGTTCCAAGCTTCCAAAAGTACTTATGAAGGAGTTAAAACCATCGTGAGTAAGAAGA
 TAAACTGGATTGTGCAGTATGCCAAAAATAAAATCTGGATTTGGAGTCCGAGTGTCCAAAACCTCCCA
 GCATCCCCTGTTGAATTCAGGCATAAGCCAGAGAAGAAATTGCTCCACAGTTTACTCTCAGGTGCCA
 AAGTACTCGGCAAAAGGCTCAGCCGAAACGCAGGCAGCATCTCAAGCTATGCGCAGAGAATCCTGGAGC
 ACAGAGAAAAACAGACTTCGGGCTGGGTTTATTGGAAGACGCGGATGCATTGTGGACTCACAGTCACAG
 CCAGGCACAGAAAACAGAAGAGACAAGCTCTGGTCCGGAGGGGACTATCCAGACCCAGAATCCACATTAC
 AGCCGTGAAGAATTGAATTCGATGACTCTTGTGAAGTAGTACAAGTACTGAGTGCGAAGCTCCAACAGCGAA
 TCCAAGAGGTTTTGAAGAGTTAACACACCAGGTGCAAGAGAAGGACTCTCTGGCGTCAGAGCTCCATGT
 CCGTCACGTGGCTATCGAGCAACTCCTCAAGAAGTCTCAAGTGGCCATGCCTCCAAGTGGGACGGACA
 GGGACGAGGTCACACCTACCCATGAACCAC

ACGCGTACGCGGCCGCTCGAG - GFP Tag - GTTTAA



[View online »](#)

Protein Sequence: >MG203959 representing NM_025967
 Red=Cloning site Green=Tags(s)

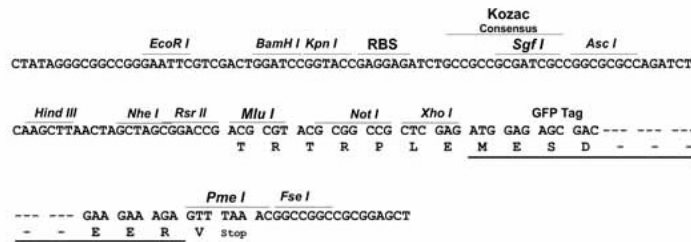
MNEEEQFVSDLNDDNICSVCKLGTDKDTLSFCHICFELNLEGVPKSNLLHTKSVRGHKDCFEKYHLIAN
 QDCSRSLKSKSTYEGVKTI VSKKINWIVQYAQNKNDLESECSKTSQHPLLNFRHKPEKLLPQFDSQVP
 KYSAKGSAGNAGSISSYAQRILEHRENTDFGLLLEDADALWTHSHSQAQKTEETSSGPEGTIQTQNPY
 SREELNSMTLAEVVQLSAKLQQRIQEVFEELTHQVQEKDSLASELHVRHVAIEQLLKNCSKLPCLQVGR
 GTRSHLPMNH

TRTRPLE - GFP Tag - V

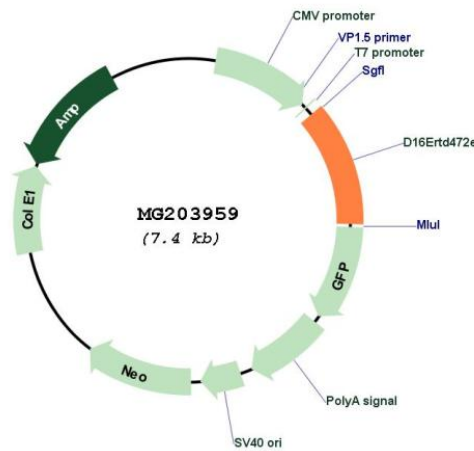
Restriction Sites: SgfI-MluI

Cloning Scheme:

Cloning sites used for ORF Shuttling:



Plasmid Map:



ACCN: NM_025967

ORF Size: 870 bp

OTI Disclaimer:	The molecular sequence of this clone aligns with the gene accession number as a point of reference only. However, individual transcript sequences of the same gene can differ through naturally occurring variations (e.g. polymorphisms), each with its own valid existence. This clone is substantially in agreement with the reference, but a complete review of all prevailing variants is recommended prior to use. More info
OTI Annotation:	This clone was engineered to express the complete ORF with an expression tag. Expression varies depending on the nature of the gene.
Components:	The ORF clone is ion-exchange column purified and shipped in a 2D barcoded Matrix tube containing 10ug of transfection-ready, dried plasmid DNA (reconstitute with 100 ul of water).
Reconstitution Method:	<ol style="list-style-type: none">1. Centrifuge at 5,000xg for 5min.2. Carefully open the tube and add 100ul of sterile water to dissolve the DNA.3. Close the tube and incubate for 10 minutes at room temperature.4. Briefly vortex the tube and then do a quick spin (less than 5000xg) to concentrate the liquid at the bottom.5. Store the suspended plasmid at -20°C. The DNA is stable for at least one year from date of shipping when stored at -20°C.
RefSeq:	NM_025967.2 , NP_080243.2
RefSeq Size:	2653 bp
RefSeq ORF:	873 bp
Locus ID:	67102
UniProt ID:	Q9D7G4
Cytogenetics:	16 45.36 cM
Gene Summary:	Plays a role in cortical progenitor cell proliferation and differentiation (PubMed:27404227). Promotes dendritic spine development of post-migratory cortical projection neurons by modulating the beta-catenin signaling pathway (PubMed:27404227).[UniProtKB/Swiss-Prot Function]