

Product datasheet for **MG203957**

Impa2 (NM_053261) Mouse Tagged ORF Clone

Product data:

Product Type: Expression Plasmids
Product Name: Impa2 (NM_053261) Mouse Tagged ORF Clone
Tag: TurboGFP
Symbol: Impa2
Synonyms: 2210415D20Rik; AI326924; AW259601
Mammalian Cell Selection: Neomycin
Vector: pCMV6-AC-GFP (PS100010)
E. coli Selection: Ampicillin (100 ug/mL)
ORF Nucleotide Sequence: >MG203957 representing NM_053261
Red=Cloning site Blue=ORF Green=Tags(s)

TTTTGTAATACGACTCACTATAGGGCGGCCGGAATTCGTCGACTGGATCCGGTACCGAGGAGATCTGCC
GCC**CGATCGCC**

ATGAAGCCGAGCAGCGAGGAAGAGGGAGAGTTGGTGCAGGGCGTGGGCCCTGGGATGAGTGCTTCGAGG
TGGCCGTGCAGTTGGCGCTGCGTGCGGGACAAATCATCAGGAAGGCCCTGACAGAGGAAAAACGCGTCTC
TACAAAAACATCTGCTGCCGATCTTGTGACAGAAACAGATCACCGAGTAGAAGATTTAATTGTTTCTGAG
TTGGCAAAGCGGTTTCTTACACACAGGTTTCATTGCAGAAGAGGCCACAGCCTCCGGGGCCAAGTGTGTGC
TACCCACAGCCCGACCTGGATCATCGACCCCATCGACGGCACCTGCAACTTCGTGCACAGGTTCCCCAC
TGTGGCAGTTAGCATCGGATTTGCTGTTACCAGGAGCTGGAATTTGGAGTGATTCACTGCACAGAG
GAGCGGCTGTACCCGGCAGGAGGGGCCAAGGTGCCTTTTGAATGGCCAGCGGCTCCAGGTCTCCAGGG
AGACAGATCTCGCAAAGGCCTTGTTCTGACAGAAATCGGGCCAAACGCGACCCCGATACCCTGAAAGT
ATTCTGAGTAACATGGAGCGGCTGCTGCACGCCAAGGCTCATGGCGTCCGAGTGATTGGCAGCTCCACC
TTGGCCCTCTGTTACCTGGCCTCGGGTGCAGCCGACGCCATTATCAGTTTGGCCTTCACTGCTGGGACC
TGGCAGCTGCCACAGTCATCATTAGAGAAGCAGGGCCATTGTGATTGACACCTCAGGTGGACCCCTTGA
CCTCATGTGTCAGAGTCGTAGCTGCTGGCACCAGAGAGATGGCAGTGCTCATAGCTCAGGCCCTACAA
ACTATTAACACGGCCGAGACGATGAGAAG

AG**CGGACCG**ACGCGTACGCGGCCGCTCGAG - GFP Tag - GTTTAA



[View online »](#)

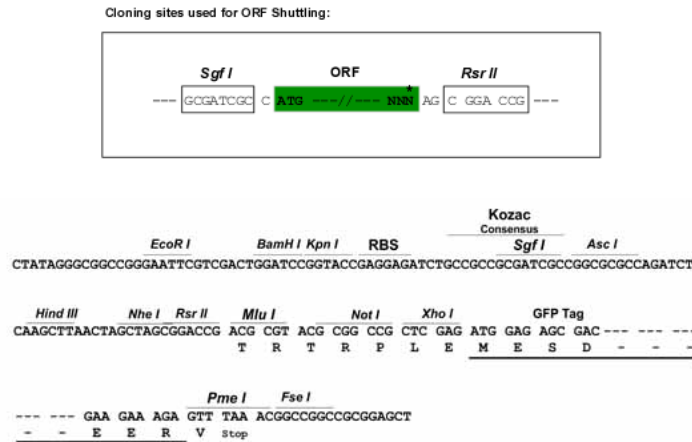
Protein Sequence: >MG203957 representing NM_053261
 Red=Cloning site Green=Tags(s)

MKPSSEEEGELVQGVGPWDECFEVAVQLALRAGQIIRKALTEEKRVSTKTSAADLVETDHRVEDLIVSE
 LRKRFPShRFIAEEATASGAKCVLTHSPTWIIDPIDGTCNFVHRFP TVAVSIGFAVHQELEFGVHHCTE
 ERLYTGRRGQGFACNGQRLQVSRETDLAKALVLTEIGPKRDPDTLKVFLSNMERLLHAKAHGVRVIGSST
 LALCYLASGAADAYYQFGLHCWDLAAATVIIREAGGIVIDTSSGPLDLMSCRVVAAGTREMAVLIAQALQ
 TINYGRDDEK

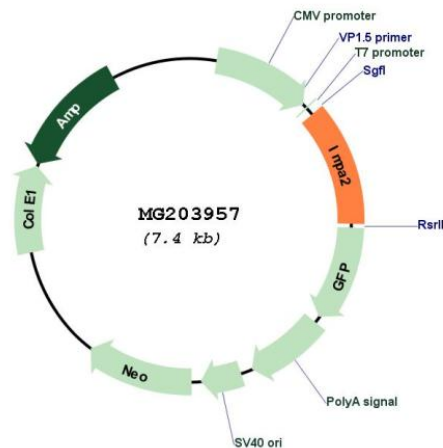
SGPTRRRLE - GFP Tag - V

Restriction Sites: SgfI-RsrII

Cloning Scheme:



Plasmid Map:



ACCN: NM_053261

ORF Size: 870 bp

OTI Disclaimer:	The molecular sequence of this clone aligns with the gene accession number as a point of reference only. However, individual transcript sequences of the same gene can differ through naturally occurring variations (e.g. polymorphisms), each with its own valid existence. This clone is substantially in agreement with the reference, but a complete review of all prevailing variants is recommended prior to use. More info
OTI Annotation:	This clone was engineered to express the complete ORF with an expression tag. Expression varies depending on the nature of the gene.
Components:	The ORF clone is ion-exchange column purified and shipped in a 2D barcoded Matrix tube containing 10ug of transfection-ready, dried plasmid DNA (reconstitute with 100 ul of water).
Reconstitution Method:	<ol style="list-style-type: none">1. Centrifuge at 5,000xg for 5min.2. Carefully open the tube and add 100ul of sterile water to dissolve the DNA.3. Close the tube and incubate for 10 minutes at room temperature.4. Briefly vortex the tube and then do a quick spin (less than 5000xg) to concentrate the liquid at the bottom.5. Store the suspended plasmid at -20°C. The DNA is stable for at least one year from date of shipping when stored at -20°C.
RefSeq:	NM_053261.2 , NP_444491.1
RefSeq Size:	1386 bp
RefSeq ORF:	873 bp
Locus ID:	114663
UniProt ID:	Q91UZ5
Cytogenetics:	18 E1
Gene Summary:	Can use myo-inositol monophosphates, scylloinositol 1,4-diphosphate, glucose-1-phosphate, beta-glycerophosphate, and 2'-AMP as substrates. Has been implicated as the pharmacological target for lithium Li(+) action in brain (By similarity).[UniProtKB/Swiss-Prot Function]