

## Product datasheet for **MG203909**

### Slc25a10 (NM\_013770) Mouse Tagged ORF Clone

#### Product data:

Product Type:	Expression Plasmids
Product Name:	Slc25a10 (NM_013770) Mouse Tagged ORF Clone
Tag:	TurboGFP
Symbol:	Slc25a10
Synonyms:	Dic
Mammalian Cell Selection:	Neomycin
Vector:	pCMV6-AC-GFP (PS100010)
E. coli Selection:	Ampicillin (100 ug/mL)
ORF Nucleotide Sequence:	>MG203909 representing NM_013770 Red=Cloning site Blue=ORF Green=Tags(s)

TTTTGTAATACGACTCACTATAGGGCGCCGGGAATTCGTCGACTGGATCCGGTACCGAGGAGATCTGCC  
GCC**CGATCGCC**

ATGGCCGAGGCACGCGCATCTCGCTGGTACTTTGGGGGGCTGGCTTCTGCGGAGCCGCTTGCTGCACGC  
ACCCGCTGGACCTGCTCAAGGTGCATCTACAGACCCAACAGGAGGTGAAGCTGCGCATGACTGGAATGGC  
ACTGCAGGTGGTGCAGCCGATGGCTTCTGGCGCTCTACAACGGCTGAGTGCCTCGTGTGCAGGCAG  
ATGACCTACTCTGACTCGGTCGCAATCTACGAGACCATGCGGGACTACATGACCAAGGACTCCCAGG  
GGCCTCTCCCCTTCTACAACAAGGTGTTGCTGGGCGGCATCAGTGGTTAACTGGAGGCTTCGTGGGGAC  
CCCAGCAGATTTGGTCAATGTCAGGATGCAAGACGACATGAAGCTGCCCCGAGCCAACGACGCAACTAC  
TCTCATGCCCTGGATGGTCTGTACCGTGTAGCCCGTGAAGAAAGCCTGAGGAAGCTTTCTCTGGAGCAA  
CTATGGCGTCCAGCCGTGGGGCCCTCGTCACTGTGGGCCAGCTGTCTGTATGACCAGGCCAAGCAACT  
GGTCTCAGCACTGGGTACCTGAGTGACAACATATTCACCCACTTTGTCTCCAGTTTCATTGCCGGCGGA  
TGTGCCACGTTTCTGTGCCAGCCCTCGATGTGCTGAAGACTCGCTGATGAACTCCAAGGGCGAGTACC  
AGGGTGTTCCTCACTGTGCCATGGAGACAGCAAAGCTTGGACCCAGGCCTTTTCAAGGGTCTCTTTCC  
CGCGGGCATCCGTCTCATCCCCACACTGTGCTCACTTTCATGTTCTCTGGAGCAGCTTCGGAAGCACTTT  
GGCATCAAAGTGCCAACCACC

**ACGCGT**ACGCGGCCGCTCGAG - GFP Tag - GTTTAA



[View online »](#)

**Protein Sequence:** >MG203909 representing NM\_013770  
 Red=Cloning site Green=Tags(s)

MAEARASRWYFGGLASCGAACCTHPLDLLKVHLQTQQEVKLRMTGMALQVVRTDGFALYNGLSASLCRQ  
 MTYSLTRFAIYETMRDYMTKDSQGPLPFYNKVLLGGISGLTGGFVGTPADLVNVRMNDMKLPSPQRNY  
 SHALDGLYRVAREESLRKLFSGATMASSRGALVTGQLSCYDQAKQLVLSTGYLSDNIFTHFVSSF IAGG  
 CATFLCQPLDVLKTRLMNSKGEYQGVFHCAMETAKLGPQAFFKGLFPAGIRLIPHTVLTFFMFLEQLRKHF  
 GIKVPTT

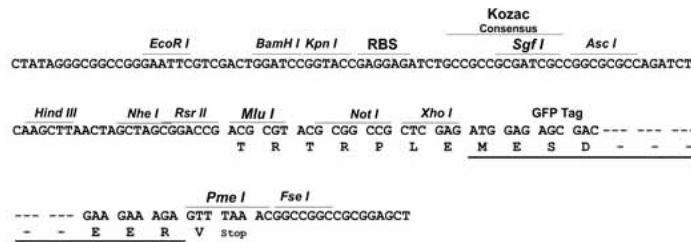
TRTRPLE - GFP Tag - V

**Restriction Sites:**

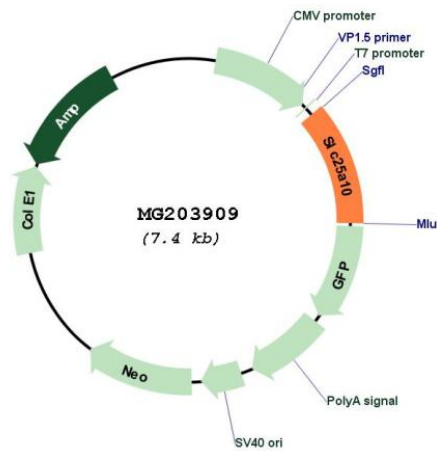
Sgfl-MluI

**Cloning Scheme:**

Cloning sites used for ORF Shuttling:



**Plasmid Map:**



**ACCN:** NM\_013770

**ORF Size:** 861 bp

<b>OTI Disclaimer:</b>	The molecular sequence of this clone aligns with the gene accession number as a point of reference only. However, individual transcript sequences of the same gene can differ through naturally occurring variations (e.g. polymorphisms), each with its own valid existence. This clone is substantially in agreement with the reference, but a complete review of all prevailing variants is recommended prior to use. <a href="#">More info</a>
<b>OTI Annotation:</b>	This clone was engineered to express the complete ORF with an expression tag. Expression varies depending on the nature of the gene.
<b>Components:</b>	The ORF clone is ion-exchange column purified and shipped in a 2D barcoded Matrix tube containing 10ug of transfection-ready, dried plasmid DNA (reconstitute with 100 ul of water).
<b>Reconstitution Method:</b>	<ol style="list-style-type: none"><li>1. Centrifuge at 5,000xg for 5min.</li><li>2. Carefully open the tube and add 100ul of sterile water to dissolve the DNA.</li><li>3. Close the tube and incubate for 10 minutes at room temperature.</li><li>4. Briefly vortex the tube and then do a quick spin (less than 5000xg) to concentrate the liquid at the bottom.</li><li>5. Store the suspended plasmid at -20°C. The DNA is stable for at least one year from date of shipping when stored at -20°C.</li></ol>
<b>RefSeq:</b>	<a href="#">NM_013770.2</a>
<b>RefSeq Size:</b>	2021 bp
<b>RefSeq ORF:</b>	864 bp
<b>Locus ID:</b>	27376
<b>UniProt ID:</b>	<a href="#">Q9QZD8</a>
<b>Cytogenetics:</b>	11 E2
<b>Gene Summary:</b>	Involved in translocation of malonate, malate and succinate in exchange for phosphate, sulfate, sulfite or thiosulfate across mitochondrial inner membrane.[UniProtKB/Swiss-Prot Function]