

Product datasheet for **MG203892**

Hoxb13 (NM_008267) Mouse Tagged ORF Clone

Product data:

Product Type:	Expression Plasmids
Product Name:	Hoxb13 (NM_008267) Mouse Tagged ORF Clone
Tag:	TurboGFP
Symbol:	Hoxb13
Mammalian Cell Selection:	Neomycin
Vector:	pCMV6-AC-GFP (PS100010)
E. coli Selection:	Ampicillin (100 ug/mL)
ORF Nucleotide Sequence:	>MG203892 representing NM_008267 Red=Cloning site Blue=ORF Green=Tags(s)

TTTTGTAATACGACTCACTATAGGGCGGCCGGAATTCGTCGACTGGATCCGGTACCGAGGAGATCTGCCGCC**CGATCGCC**

ATGGAGCCCGCAATTATGCCACCTTGGACGGGGCCAAGGATATCGAAGGCTTGCTGGGAGCTGGAGGGG
GTCGGAATCTAGTCTCCCACTCCTCCCACTGGCTAGCCATCCCAGCGCTCCAACGCTGATGCCAACTGT
CAACTATGCCCCCTGGATCTGCCAGGCTCTGCAGAGCCACCAAGCAGTGCCACCCTTGTCTGGGGTG
CCTCAGGGGGCATCTCCAGCTCCTGTGCCTTATGGCTACTTTGGAGGCGGGTACTACTCTTGCCAGAT
CCAGGAGTCCCTGAAACCTGTGCCAGACGGCCGCTGGCTACCTACCCTTCGAAACTCCTGCACC
TGGGAGGAGATATCCAGCCGTCACCGAGTTTGCCTTCTATCCGGGCTACCGGGACCATACCAGCCT
ATGGCCAGTTACCTGGATGTGTCTGTGGTGCAGACCCTGGGAGCCCGGAGAGCCTCGCCACGATTCTC
TGCTTCCCGTGGACAGTTACCAGCCCTGGGCCCTGGCCGGTGGCTGGAACAGCCAGATGTGTTGCCAAGG
TGAACAGAACCACCAGGTCCATTCTGAAAGCAGCGTTTGCAGAGCCAGTGTCCAGCACCTCCTCCC
GACGGCTGTGCCTTCCGCCGAGGCCGCAAAAAACGCATTCCTATAGCAAGGGGCAGTTGCGGGAGTTGG
AGCGGGAGTATGCAGCAACAAGTTTACTAAGGACAAGAGGCGCAAGATCTCGGCAGCCACCAGCCT
CTCTGAACGCCAGATTACCATCTGGTTTCAGAACCGCCGGTCAAGGAGAAGAAGTTCTTGCCAAGGTC
AAGACCAGCACTACCCCG

ACGCGTACGCGGCCGCTCGAG - GFP Tag - GTTTAA



[View online »](#)

Protein Sequence: >MG203892 representing NM_008267
Red=Cloning site Green=Tags(s)

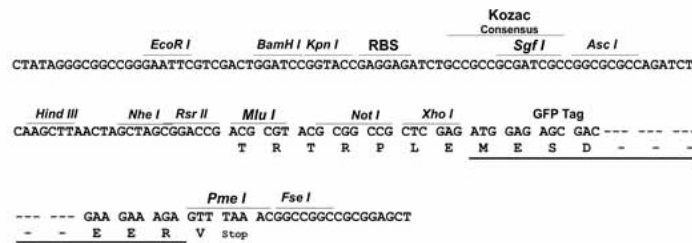
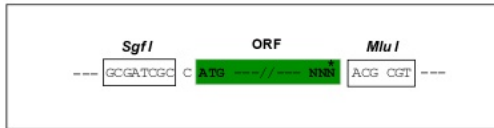
MEPGNYATLDGAKDIEGLLGAGGGRNLVSHSSPLASHPAAPTLMPTVNYAPLDLPGSAEPPKQCHPCPGV
 PQGASPAPVPYGYFGGGYYSCRVSRSSLKPCAQTAAATATYPSETPAGGEEYPSRPTEFAFYPGYPGYQP
 MASYLDSVVQTLGAPGEPRHDSLLPVDSYQPWALAGGWNSQMCCQGEQNPPGPFWKAFAEAPSVQHPPP
 DGCAFRGRKKRIPYSGQLRELEREYAANKFITKDKRRKISAATSLSERQITIWQNRNVKEKKVLAKV
 KTSTTP

TRTRPLE - GFP Tag - V

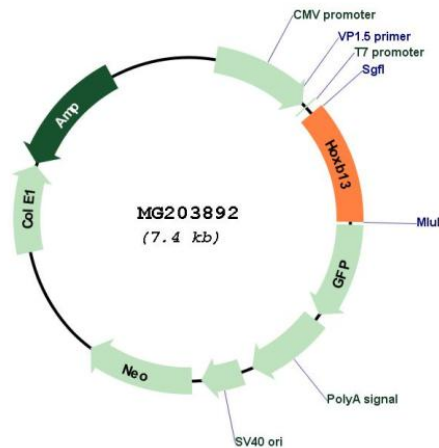
Restriction Sites: SgfI-MluI

Cloning Scheme:

Cloning sites used for ORF Shutting:



Plasmid Map:



ACCN: NM_008267

ORF Size: 858 bp

OTI Disclaimer:	The molecular sequence of this clone aligns with the gene accession number as a point of reference only. However, individual transcript sequences of the same gene can differ through naturally occurring variations (e.g. polymorphisms), each with its own valid existence. This clone is substantially in agreement with the reference, but a complete review of all prevailing variants is recommended prior to use. More info
OTI Annotation:	This clone was engineered to express the complete ORF with an expression tag. Expression varies depending on the nature of the gene.
Components:	The ORF clone is ion-exchange column purified and shipped in a 2D barcoded Matrix tube containing 10ug of transfection-ready, dried plasmid DNA (reconstitute with 100 ul of water).
Reconstitution Method:	<ol style="list-style-type: none">1. Centrifuge at 5,000xg for 5min.2. Carefully open the tube and add 100ul of sterile water to dissolve the DNA.3. Close the tube and incubate for 10 minutes at room temperature.4. Briefly vortex the tube and then do a quick spin (less than 5000xg) to concentrate the liquid at the bottom.5. Store the suspended plasmid at -20°C. The DNA is stable for at least one year from date of shipping when stored at -20°C.
RefSeq:	NM_008267.4
RefSeq Size:	1313 bp
RefSeq ORF:	861 bp
Locus ID:	15408
UniProt ID:	P70321
Cytogenetics:	11 59.63 cM
Gene Summary:	Sequence-specific transcription factor which is part of a developmental regulatory system that provides cells with specific positional identities on the anterior-posterior axis. Binds preferentially to methylated DNA (By similarity).[UniProtKB/Swiss-Prot Function]