

## Product datasheet for **MG203868**

### **Pqlc2 (NM\_145384) Mouse Tagged ORF Clone**

#### Product data:

Product Type:	Expression Plasmids
Product Name:	Pqlc2 (NM_145384) Mouse Tagged ORF Clone
Tag:	TurboGFP
Symbol:	Pqlc2
Synonyms:	BC019216
Mammalian Cell Selection:	Neomycin
Vector:	pCMV6-AC-GFP (PS100010)
E. coli Selection:	Ampicillin (100 ug/mL)
ORF Nucleotide Sequence:	>MG203868 representing NM_145384 Red=Cloning site Blue=ORF Green=Tags(s)

TTTTGTAATACGACTCACTATAGGGCGCCGGGAATTCGTCGACTGGATCCGGTACCGAGGAGATCTGCC  
GCC**CGATCGCC**

ATGGACCAGGCCCTACTGTTGGTTCCTGCTGGGCTGGATCGGTGGAGATTCCTGCAACCTCATTGGCT  
CCTTTCTGGCAGACCAGCTACCCCTGCAGACCTACACGGCTGTGTATTATGTCCTGGCCGACCTGATGAT  
GCTGACGCTGACTTCCATTATAAGTTCAAGAAGCGACCTTCTCCGTTGTCTGCCCTATCAATTCTGTG  
CTCTTGTTCATCTGGGGACGGTGTATCACACCACTGTTGAGCAGCACTGATCCTGTGGCTGTCCCA  
GGGAAGGCTTCCGGGGCGGACACTCCTGTCTGTGGAGCCAGGAATAAGCCCTTCACAAAGAAGGAGGT  
CATCGGCTTTGTCATCGGCTCCGCTCCAGCTTGTGTACCTGCTCTCGAGGCTGCCTCAGATTCGCACC  
AATTTTCATACGGCAGTCAACCCAAGGCATCTCCTACTCGCTGTTTCGCACTGGTGTGCTGGGGAACACGC  
TGTACGGGCTCAGCGTGCTGCTCAAGAACCCCGAGGTGGGCCAGAGTGAGGGCAGCTACCTGCTGCACCA  
CCTGCCCTGGCTCGTGGGACGCTGGGGGTGCTGCTGCTGCACACCATCGTATCCTTCAAAGCGTGTGAT  
GTTGGCACCGTTGTGTGGCAAGACGGCCTCTGCTTCAAGTGTGCACATCCCTGCCAGCCACCCCTCTGT  
CTACATACTCATCCACCTGCCATTAGCACATTCACCTATTCTCGTCCGTGTCTTCCATCTACAATCCA  
GCCTTTAACCCCTTCAATTTACCCATCCAACCTCATCCACCCACCCATCACCCACTTAGACACCTATCC  
ATCTATGCACTCACC

**ACGCGT**ACGCGGCCGCTCGAG - GFP Tag - GTTTAA



[View online »](#)

**Protein Sequence:** >MG203868 representing NM\_145384  
Red=Cloning site Green=Tags(s)

MDQALSLWFLLGWIGGDSNLIIGSFLADQLPLQTYTAVYYVLADLMMLTLYFHYKFKRPSLSAPINSV  
 LLFILGTVICITPLLSSSTDPVAVPREGFRGRTLLSVEPGNKPFTKKEVIGFVIGSASSLLYLLSRLPQIRT  
 NFIRQSTQGISYSLFALVMLGNTLYGLSVLLKNPEVQGSEGSYLLHHLPLWLVGSLGVLLLDITIVSFKACD  
 VGTVVWARRPLLQCAHPCQPTPLSTYSSTCPLAHSPIRPCVLPSTIQPLTTLHLP IQPHPTHHPLRHLS  
 IYALT

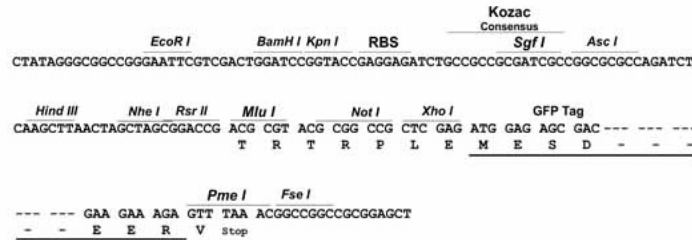
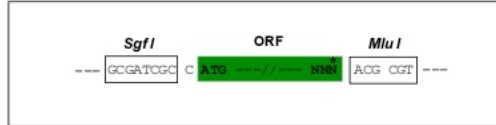
TRTRPLE - GFP Tag - V

**Restriction Sites:**

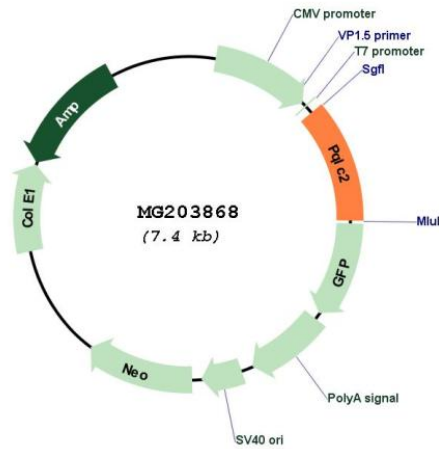
SgfI-MluI

**Cloning Scheme:**

Cloning sites used for ORF Shuttling:



**Plasmid Map:**



**ACCN:** NM\_145384

**ORF Size:** 855 bp

<b>OTI Disclaimer:</b>	The molecular sequence of this clone aligns with the gene accession number as a point of reference only. However, individual transcript sequences of the same gene can differ through naturally occurring variations (e.g. polymorphisms), each with its own valid existence. This clone is substantially in agreement with the reference, but a complete review of all prevailing variants is recommended prior to use. <a href="#">More info</a>
<b>OTI Annotation:</b>	This clone was engineered to express the complete ORF with an expression tag. Expression varies depending on the nature of the gene.
<b>Components:</b>	The ORF clone is ion-exchange column purified and shipped in a 2D barcoded Matrix tube containing 10ug of transfection-ready, dried plasmid DNA (reconstitute with 100 ul of water).
<b>Reconstitution Method:</b>	<ol style="list-style-type: none"><li>1. Centrifuge at 5,000xg for 5min.</li><li>2. Carefully open the tube and add 100ul of sterile water to dissolve the DNA.</li><li>3. Close the tube and incubate for 10 minutes at room temperature.</li><li>4. Briefly vortex the tube and then do a quick spin (less than 5000xg) to concentrate the liquid at the bottom.</li><li>5. Store the suspended plasmid at -20°C. The DNA is stable for at least one year from date of shipping when stored at -20°C.</li></ol>
<b>RefSeq:</b>	<a href="#">NM_145384.1</a> , <a href="#">NP_663359.1</a>
<b>RefSeq Size:</b>	2779 bp
<b>RefSeq ORF:</b>	882 bp
<b>Locus ID:</b>	212555
<b>UniProt ID:</b>	<a href="#">Q8C4N4</a>
<b>Cytogenetics:</b>	4 D3
<b>Gene Summary:</b>	Amino acid transporter that specifically mediates the pH-dependent export of the cationic amino acids arginine, histidine and lysine from lysosomes.[UniProtKB/Swiss-Prot Function]