

## Product datasheet for **MG203821**

### Lix1 (BC049574) Mouse Tagged ORF Clone

#### Product data:

Product Type:	Expression Plasmids
Product Name:	Lix1 (BC049574) Mouse Tagged ORF Clone
Tag:	TurboGFP
Symbol:	Lix1
Synonyms:	5730466L18Rik
Mammalian Cell Selection:	Neomycin
Vector:	pCMV6-AC-GFP (PS100010)
E. coli Selection:	Ampicillin (100 ug/mL)
ORF Nucleotide Sequence:	>MG203821 representing BC049574 Red=Cloning site Blue=ORF Green=Tags(s)

TTTTGTAATACGACTCACTATAGGGCGGCCGGAATTCGTCGACTGGATCCGGTACCGAGGAGATCTGCC  
GCC**CGATCGCC**

ATGGACAGAACCTTGAATCTCTGAGGCACATCATTGCCAAGCCTTGCCTCACAGAGACCCGGCTTTGG  
TCTTCAAAGACTGAATGTTGTGTCAATGTTACAGGAATTTGGGAAAGCAAGCAGCAGCAGAAAGCCAC  
CTTCTCCAGTGAGGGACTGGTGGTCTATGAGTCAATGCCTTCTCTGGGCTCCCTTTGTGAGCTATGTG  
ACTCTCCCTGGAGGGAGCTGCTTTGGCACTTTCAGTGTCTTAAGTAGAGCTGAGGCCAGCGGGGATG  
CTGCTAAAGTGGCGCTCATCAACTCTCTTCAATGAGCTACCCTCCGAAGGATCACCAAGGAGTTCAT  
CATGGAGAGTGTTCAAGGAAGCAGTAGCCTCCACCAGGGGCACGTTAGATGATGCGGATGACCCAAGCACA  
AGTGTGGGAGCCTATCACTACATGCTGGAGTCAAACATGGGGAAGACTATGCTGGAGTTTCAGGAACTAA  
TGACCATTTTCCAACACTGCACTGGAATGGAAGCCTGAAAGCCCTCCGTGAAACAAAGTCTCTCGACA  
GGAAGTCATCTCCTACTATTCCAATATTCTTTAGATGAAAAGATGCGTAGCCACATGGCCCTGGACTGG  
ATTATGAAGGAGCGTGAATCACCAGGAATCTCTCTCAAGAGCTGCGTGCAGCCCTAGGGCAGCTGGAGG  
AAGCCAGGAAGGCTGGACAAGAAGTACGATTTTACAAAGAAAAAAGAAATCCTGAGCTTGGCCCTGAC  
TCAGATCTATAGTGACCCTGACCCTTCTCACCCAGTGATGACCAGCTAAGCCTCACGGCTCTGTGTGGC  
TATCAT

**ACGCGT**ACGCGGCCGCTCGAG - GFP Tag - GTTTAA



[View online »](#)

**Protein Sequence:** >MG203821 representing BC049574  
 Red=Cloning site Green=Tags(s)

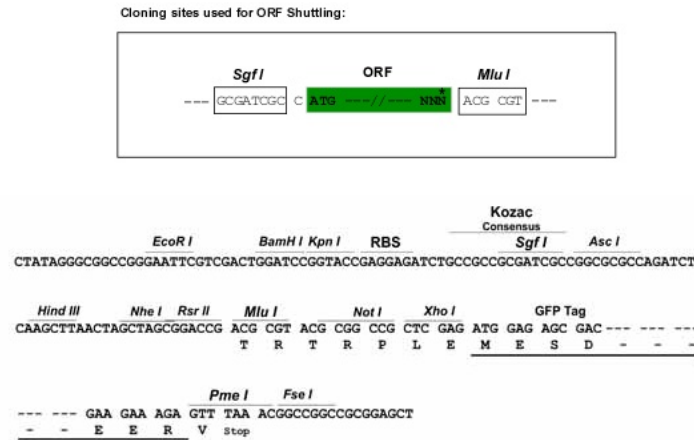
MDRTLES LRHIIA QALPHRDPALVFKDLNVV SMLQEFWESKQQKATFSSEGLVVYESMPSSGPPFVSYV  
 TLPGGSCFGNFQCCLSR AEARRDAAKVALINSLFNELPSRRITKEFIMESVQEA VASTRGTLD DADDPST  
 SVGAYHYMLESNMGKTML E FQELMTIFQLLHWNGSLKALRETKCSRQEVISYYSQYSLDEKMRSHMALDW  
 IMKERESPGILSQELRAALGQLEEAR KAGQELRFYKEKKEILSLALTQIYSDPD P SPSDDQLSLTALCG  
 YH

TRTRPLE - GFP Tag - V

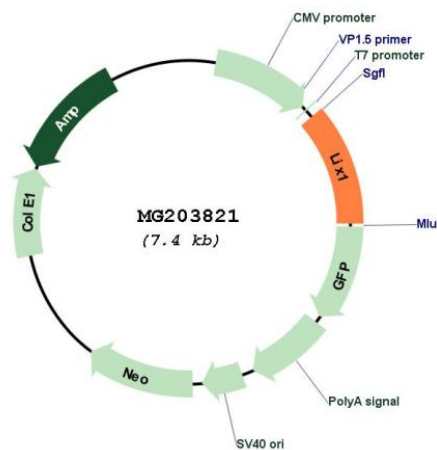
**Restriction Sites:**

SgfI-MluI

**Cloning Scheme:**



**Plasmid Map:**



**ACCN:** BC049574

**ORF Size:** 846 bp

<b>OTI Disclaimer:</b>	The molecular sequence of this clone aligns with the gene accession number as a point of reference only. However, individual transcript sequences of the same gene can differ through naturally occurring variations (e.g. polymorphisms), each with its own valid existence. This clone is substantially in agreement with the reference, but a complete review of all prevailing variants is recommended prior to use. <a href="#">More info</a>
<b>OTI Annotation:</b>	This clone was engineered to express the complete ORF with an expression tag. Expression varies depending on the nature of the gene.
<b>Components:</b>	The ORF clone is ion-exchange column purified and shipped in a 2D barcoded Matrix tube containing 10ug of transfection-ready, dried plasmid DNA (reconstitute with 100 ul of water).
<b>Reconstitution Method:</b>	<ol style="list-style-type: none"><li>1. Centrifuge at 5,000xg for 5min.</li><li>2. Carefully open the tube and add 100ul of sterile water to dissolve the DNA.</li><li>3. Close the tube and incubate for 10 minutes at room temperature.</li><li>4. Briefly vortex the tube and then do a quick spin (less than 5000xg) to concentrate the liquid at the bottom.</li><li>5. Store the suspended plasmid at -20°C. The DNA is stable for at least one year from date of shipping when stored at -20°C.</li></ol>
<b>RefSeq:</b>	<a href="#">BC049574.1</a>
<b>RefSeq Size:</b>	1367 bp
<b>RefSeq ORF:</b>	848 bp
<b>Locus ID:</b>	66643
<b>Cytogenetics:</b>	17 A3.1-A3.2