

## Product datasheet for **MG203817**

### **Kdelc1 (BC023141) Mouse Tagged ORF Clone**

#### Product data:

Product Type:	Expression Plasmids
Product Name:	Kdelc1 (BC023141) Mouse Tagged ORF Clone
Tag:	TurboGFP
Symbol:	Kdelc1
Synonyms:	1810049A15Rik; 5730416C13Rik; EP58; Kdel1
Mammalian Cell Selection:	Neomycin
Vector:	pCMV6-AC-GFP (PS100010)
E. coli Selection:	Ampicillin (100 ug/mL)
ORF Nucleotide Sequence:	>MG203817 representing BC023141 Red=Cloning site Blue=ORF Green=Tags(s)

TTTTGTAATACGACTCACTATAGGGCGGCCGGAATTCGTCGACTGGATCCGGTACCGAGGAGATCTGCC  
GCC**CGATCGCC**

ATGTT**CAGC**ATTT**CGCT**GCTTT**CCTGC**TTTT**CTG**GGGACTGTGCCAGCACTTGCCAGACCGGGGAG  
AGAGGAGGCTGAGCCAGAGAAGAGCGAAATATGGGGACCGGGCTAAAAGCACACGTGGTCTTCTGC  
CCGCTATTTCTACATTCGGGCGGTGGATACCTCAGGGGAACAGTTTACATCTTCTCCAGGTGAAAAGGTG  
TTCCAGGTTAAAATCTCAGCACCGGATGAGCAGTTCACGAGAGTTGGTGTCCAGGTTTTAGATCGAAAGG  
ACGGTTCTTTCATAGTAAGATACAGAATGTATGCCAGCTACAGAAATCTGAAGATAGAGGTTAAACACCA  
TGGGCAACATGTTGCCGAGTCTCCTTATGTTTTAAGAGGACCAGTTTACCATGAGAAGTGTACTGTCTCT  
TTGGAAGACAGTGACGCCTGGCTACGGGAGATGAACTGTTTCGGAACAATCTCTCAGATTCAGAAAGATC  
TGGCACATTTCCCTACTGTTGATCCTGAAAAGATTGCAGCAGAAATCCCAAAGCGATTTGGTCAGAGGCA  
AAGCCTGTGCTACTATACCTTAAAGGACAATAAGGTTTATATCAAGACTCATGGT**GAGC**AGTGGCTTT  
AGGATTTTCATGGATGCAATACTACTTT**CATT**GACTAGAAAGGTGAGGATGCCAGATGTGGAAATTTTTG  
TTAATTTGGGAGACTGGCCTTTGGAAAAAAGAAATCCA**ACTCCA**ACATTCAGCCGATCTTTTCTGGTG  
TGGCTCCACAGAGTCCAGGGATATTGTGATGCCTACCTACGACCTGACTGACTCTGTTCTAGAAACCATG  
GGCCGG

**ACGCGT**ACGCGGCCGCTCGAG - GFP Tag - GTTTAA



[View online »](#)

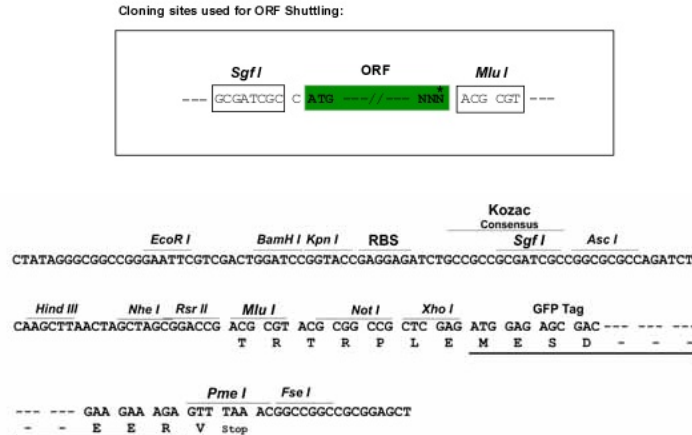
**Protein Sequence:** >MG203817 representing BC023141  
Red=Cloning site Green=Tags(s)

MFSISLLSCLFLGTVPALAQTGGERRLSPEKSEIWGPGLKAHVLPARYFYIRAVDTSGEQFTSSPGKVFQVKISAPDEQFTRVGVQLDRKDGSIIVRYRMYASYRNLIKIEVKHHGQHVAVESPVVLRGPVYHENCDCPLEDSAAWLREMNCSETISQIQKDLAHFPTVDPEKIAAEIPKRFGRQSLCHYTLKDNKVYIKTHGEHVGRIFMDAILLSLTRKVRMPDVEFFVNLGDWPLEKKKSNSNIQPIFSWCGSTESRDIVMPTYDLTDSVLETMGR

TRTRPLE - GFP Tag - V

**Restriction Sites:** SgfI-MluI

**Cloning Scheme:**



**ACCN:** BC023141

**ORF Size:** 848 bp

**OTI Disclaimer:** The molecular sequence of this clone aligns with the gene accession number as a point of reference only. However, individual transcript sequences of the same gene can differ through naturally occurring variations (e.g. polymorphisms), each with its own valid existence. This clone is substantially in agreement with the reference, but a complete review of all prevailing variants is recommended prior to use. [More info](#)

**OTI Annotation:** This clone was engineered to express the complete ORF with an expression tag. Expression varies depending on the nature of the gene.

**Components:** The ORF clone is ion-exchange column purified and shipped in a 2D barcoded Matrix tube containing 10ug of transfection-ready, dried plasmid DNA (reconstitute with 100 ul of water).

**Reconstitution Method:**

1. Centrifuge at 5,000xg for 5min.
2. Carefully open the tube and add 100ul of sterile water to dissolve the DNA.
3. Close the tube and incubate for 10 minutes at room temperature.
4. Briefly vortex the tube and then do a quick spin (less than 5000xg) to concentrate the liquid at the bottom.
5. Store the suspended plasmid at -20°C. The DNA is stable for at least one year from date of shipping when stored at -20°C.

**RefSeq:** [BC023141](#), [AAH23141](#)

**RefSeq Size:** 2156 bp

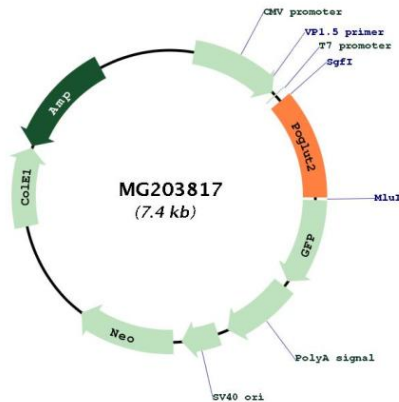
**RefSeq ORF:** 848 bp

**Locus ID:** 72050

**Cytogenetics:** 1 C1.1

**Gene Summary:** Protein glucosyltransferase that catalyzes the transfer of glucose from UDP-glucose to a serine residue within the consensus sequence peptide C-X-N-T-X-G-S-F-X-C. Can also catalyze the transfer of xylose from UDP-xylose but less efficiently. Specifically targets extracellular EGF repeats of proteins such as NOTCH1 and NOTCH3. May regulate the transport of NOTCH1 and NOTCH3 to the plasma membrane and thereby the Notch signaling pathway. [UniProtKB/Swiss-Prot Function]

### Product images:



Circular map for MG203817