

Product datasheet for **MG203813**

Cdv3 (NM_175833) Mouse Tagged ORF Clone

Product data:

Product Type:	Expression Plasmids
Product Name:	Cdv3 (NM_175833) Mouse Tagged ORF Clone
Tag:	TurboGFP
Symbol:	Cdv3
Synonyms:	2510010F10Rik; C79446; C230084J24Rik; TPP36
Mammalian Cell Selection:	Neomycin
Vector:	pCMV6-AC-GFP (PS100010)
E. coli Selection:	Ampicillin (100 ug/mL)
ORF Nucleotide Sequence:	>MG203813 representing NM_175833 Red=Cloning site Blue=ORF Green=Tags(s)

TTTTGTAATACGACTCACTATAGGGCGGCCGGAATTCGTCGACTGGATCCGGTACCGAGGAGATCTGCC
GCC**CGATCGCC**

ATGGCCGAGACCGAGGAGCGGAGCCTGGACAACCTCTTCGCCAAGAGGGACAAGAAGAAGAAGGAAC
GGAGCAGTCGCGCGCCAACCGCGCGAGCGCGGGCGGGAGCAGCGCGCGCGGGCTCCAGGCCGG
CGATGGCGGGAGCCTGGGCTCCGGTGCCAGGTCGGGCGACGGCGGGAGCTTGGGCTCCAGGTCC
GGCAGCGCGGGAGCTCGGGCTCTGGTGTAGGTCGGGAGACGGCGGGAGCTCGAGTCCGGAGACGGC
GGAGCGCGGGCCCGCCGCAAGGCCATAACGAAGGATGAAAATGAGTGGAAAGAATTTGAGCAAAGAGA
GGTTGATTACAGCGGATTAAGAGTTCAGGCAATGCAAATAAGTAAAAGGAAGATGATGATAATGAGAAG
AGAGAAGATCCAGGAGATAATTGGGAAGAAGGTGGAGGTGGCAGTGGAGCAGAAAAATCTTCAGGTCCCT
GGAATAAAACCGCTCCGGTACAAGCGCCTCCTGTCCAGTAAACAGTTACAGAAACCCCGGAGCCAGCAAT
GCCCAGTGGTGTATACAGGCCTCCTGGGCAAGGCTAACCACAACAAGGAAAACGCCACAAGGACCACCA
GAAATATACAGTGACACGCAGTCCCATCCCTGCAGTCCACTGCCAAGCATGTAGAGAGCCGGAAGGATA
AAGAAATGGAGAAGAGCTTTGAAGTAGTAAGACACAAAAATAGAGATAGGGAGGAGGTTTCAAAAAACCA
GGCCCTTAAACTTCAGCTAGACAACCAAGTATGCTGTGCTTGAGAAATCAGAAGTACAGCCACACACAGTAC
AGC

ACGCGTACGCGGCCGCTCGAG - GFP Tag - GTTTAA



[View online »](#)

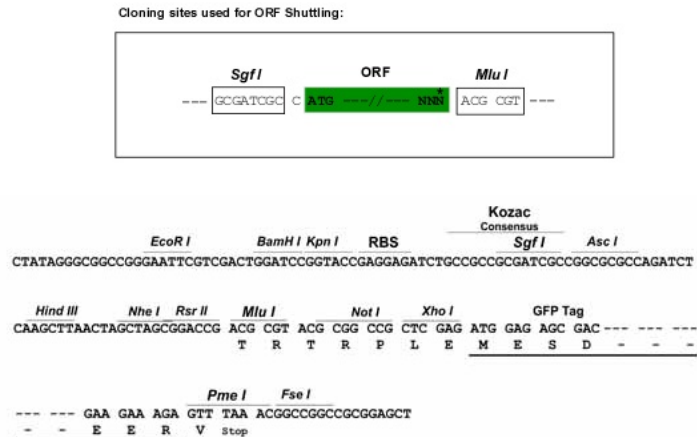
Protein Sequence: >MG203813 representing NM_175833
Red=Cloning site Green=Tags(s)

MAETEERSLDNFFAKRDKKKKKERSRAANAASGAGGSSAAAGSRPGDGGSLGSGARSGDGGSLGSGSRS
 GDGSSSGSGARSGDGGSSRSGDGGSSAGPAGKAITKDENEWKEFEQREVDYSGLRVQAMQISEKEDDDNEK
 REDPGDNWEEGGGGSGAEKSSGPWNKTAPVQAPPAPVTVTETPEPAMPSPGVYRPPGARLTTTRKTPQGP
 EIYSDTQFPSLQSTAKHVESRKDKEMEKSFVVRHKNRDREEVSKNQALKQLDNQYAVLENQKYSHTQY
 S

TRTRPLE - GFP Tag - V

Restriction Sites: SgfI-MluI

Cloning Scheme:



ACCN: NM_175833

ORF Size: 843 bp

OTI Disclaimer: The molecular sequence of this clone aligns with the gene accession number as a point of reference only. However, individual transcript sequences of the same gene can differ through naturally occurring variations (e.g. polymorphisms), each with its own valid existence. This clone is substantially in agreement with the reference, but a complete review of all prevailing variants is recommended prior to use. [More info](#)

OTI Annotation: This clone was engineered to express the complete ORF with an expression tag. Expression varies depending on the nature of the gene.

Components: The ORF clone is ion-exchange column purified and shipped in a 2D barcoded Matrix tube containing 10ug of transfection-ready, dried plasmid DNA (reconstitute with 100 ul of water).

Reconstitution Method:

1. Centrifuge at 5,000xg for 5min.
2. Carefully open the tube and add 100ul of sterile water to dissolve the DNA.
3. Close the tube and incubate for 10 minutes at room temperature.
4. Briefly vortex the tube and then do a quick spin (less than 5000xg) to concentrate the liquid at the bottom.
5. Store the suspended plasmid at -20°C. The DNA is stable for at least one year from date of shipping when stored at -20°C.

RefSeq: [NM_175833.2](#), [NP_787027.1](#)

RefSeq Size: 3335 bp

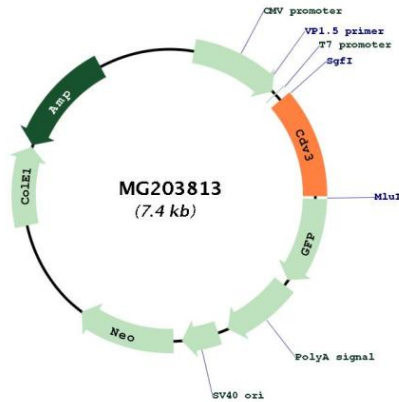
RefSeq ORF: 846 bp

Locus ID: 321022

UniProt ID: [Q4VAA2](#)

Cytogenetics: 9 F1

Product images:



Circular map for MG203813