

Product datasheet for **MG203809**

Eapp (NM_025456) Mouse Tagged ORF Clone

Product data:

Product Type: Expression Plasmids
 Product Name: Eapp (NM_025456) Mouse Tagged ORF Clone
 Tag: TurboGFP
 Symbol: Eapp
 Synonyms: 1810011O16Rik
 Mammalian Cell Selection: Neomycin
 Vector: pCMV6-AC-GFP (PS100010)
 E. coli Selection: Ampicillin (100 ug/mL)
 ORF Nucleotide Sequence: >MG203809 representing NM_025456
 Red=Cloning site Blue=ORF Green=Tags(s)

TTTTGTAATACGACTCACTATAGGGCGGCCGGAATTCGTCGACTGGATCCGGTACCGAGGAGATCTGCC
 GCC**CGATCGCC**

ATGAACCGACTCCAGGATGACTATGACCCGTACGCGGTGGAAGAGCCGAGCGACGAGGAGCCGGCTCTGA
 GCAGTTCTGAAGATGAAGTGGATGTGCTTTTACATGGAACCCAGACCAAAGCGAAAATCATCCGGGA
 ATGTCTTACTGGAGAAAGTGAGTCATCAAGTGAAGATGAATTTGAAAAAGAAATGGAGGCTGAATAAC
 TCCACCATGAAGACAATGGAGGACCAGTTATCCTCACTGGGAACAGGGTCTTCTCAGGAGTTGCCAAAG
 TGGGAGGAGTACAGAAAAGTTCTATGATGAGATATATTTGATTCTGATTCTGAGGATGAGGACAAAAC
 AGTGACCAAGAAGAAGAAGAACAACACAGGATTCCAACAAACGATGAGCTGCTGTATGATCCTGAG
 AAAGATAACAGAGACCAGGCCTGGGTTGACGCCAAGAGGAGGGGTTATCATGCTTTTGGATTGCAAAGGC
 CACGTCAGAAAACAACAGCCTGTTCCAAACAGTGATGCTGTTCTGAATTGCCAGCCTGTATGACGACATT
 GTGCCCTTATTGCCAGAGGCATGAATCCTACAAGACGCAGTACAGGGCAATGTTTGTGATGAATTGTTCT
 ATCAACAGAGAAGAGGTTCTGAGATAACAAGATCCAGAAAACAGGAGGAAACGGCGGAGTGCTAAGAAGA
 TGAGGTCTAATCCTGAAGATCCCGCAGAGAGAGAAGCGGAGGAAATCTATCACCTGTCTGTGCACAGA
 GTGTTCAACTGAAGTGGCAGTCTATGACAAGGATGAAGTCTTTCACCTTTTCAATGTTTTAGCGAGCCAT
 TCT

ACGCGTACGCGGCCGCTCGAG - GFP Tag - GTTTAA



[View online »](#)

Protein Sequence: >MG203809 representing NM_025456
 Red=Cloning site Green=Tags(s)

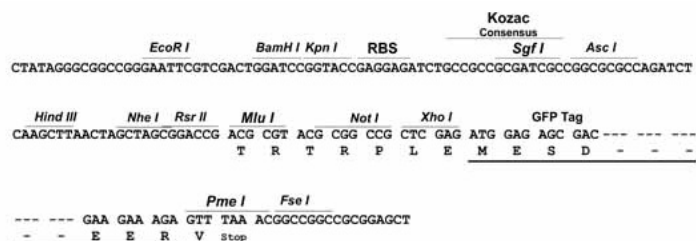
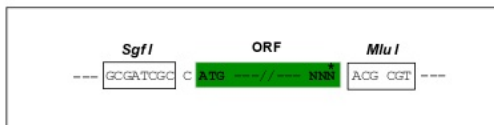
MNRLQDDYDPYAVEEPSDEEPALSSSEDEL DVLLHGTPDQKRKL IRECLTGESESSSEDEFKEMEAELN
 STMKTMEDQLSSLGTGSSSGVAKVGGVTEKFYDEIYFDSSEDEDKVTKTKKKKQHRIP TNDLLYDPE
 KDNRDQAWVDARRRKYHAFGLQRPRKQQPVPNSDAVLNCPACMTTLCLDCQRHESYKTQYRAMFVMNCS
 INREEVLYRKNPENRRRKRSAKKMRSNPEDPAEREAEEIYHPVMCTECSTEVAVYDKDEVFHF FNVLASH
 S

TRTRPLE - GFP Tag - V

Restriction Sites: SgfI-MluI

Cloning Scheme:

Cloning sites used for ORF Shuttling:



ACCN: NM_025456

ORF Size: 843 bp

OTI Disclaimer: The molecular sequence of this clone aligns with the gene accession number as a point of reference only. However, individual transcript sequences of the same gene can differ through naturally occurring variations (e.g. polymorphisms), each with its own valid existence. This clone is substantially in agreement with the reference, but a complete review of all prevailing variants is recommended prior to use. [More info](#)

OTI Annotation: This clone was engineered to express the complete ORF with an expression tag. Expression varies depending on the nature of the gene.

Components: The ORF clone is ion-exchange column purified and shipped in a 2D barcoded Matrix tube containing 10ug of transfection-ready, dried plasmid DNA (reconstitute with 100 ul of water).

Reconstitution Method:

1. Centrifuge at 5,000xg for 5min.
2. Carefully open the tube and add 100ul of sterile water to dissolve the DNA.
3. Close the tube and incubate for 10 minutes at room temperature.
4. Briefly vortex the tube and then do a quick spin (less than 5000xg) to concentrate the liquid at the bottom.
5. Store the suspended plasmid at -20°C. The DNA is stable for at least one year from date of shipping when stored at -20°C.

RefSeq: [NM_025456.4](#)

RefSeq Size: 1170 bp

RefSeq ORF: 846 bp

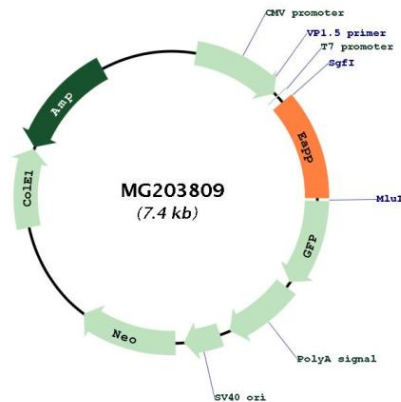
Locus ID: 66266

UniProt ID: [Q5BU09](#)

Cytogenetics: 12 C1

Gene Summary: May play an important role in the fine-tuning of both major E2F1 activities, the regulation of the cell-cycle and the induction of apoptosis. Promotes S-phase entry, and inhibits p14(ARP) expression (By similarity).[UniProtKB/Swiss-Prot Function]

Product images:



Circular map for MG203809