

Product datasheet for **MG203808**

Igfbp7 (NM_008048) Mouse Tagged ORF Clone

Product data:

Product Type: Expression Plasmids
Product Name: Igfbp7 (NM_008048) Mouse Tagged ORF Clone
Tag: TurboGFP
Symbol: Igfbp7
Synonyms: AGM; Fstl2; Mac25
Mammalian Cell Selection: Neomycin
Vector: pCMV6-AC-GFP (PS100010)
E. coli Selection: Ampicillin (100 ug/mL)
ORF Nucleotide Sequence: >MG203808 representing NM_008048
Red=Cloning site Blue=ORF Green=Tags(s)

TTTTGTAATACGACTCACTATAGGGCGGCCGGAATTCGTCGACTGGATCCGGTACCGAGGAGATCTGCC
 GCCCGATCGCC

ATGGAGCGGCCGCGCGCCCTGCTGCTGGGTGCAGCCGGACTGCTGCTCCTGCTCCTGCCCTCTCT
 CTTCTCTCTTCGGATGCCTGCGGCCGTGCGTCCGGCCTCTGCCCGCGCTGCCCGGCTCGGCTG
 CCCGCTGGGTGAGACCCGCGACGCGTGC GGGTGCTGCCGGTGTGTGCTCGCGGCGAGGGTGAGCCGTG
 GGGGGCGCGCGCCGGCGGGGGGCACTGCGCGCCGGCATGGAGTGC GTGAAGAGCCGAAGAGCGGA
 GGGGTAAGCCGGGCGAGCAGCCGGCGGTCCCGGACCCTCGCCGTGTGCGTGTGCAAGAGCCGCTACCC
 GGTGTGCGGCAGCAACGGCATCACCTACCCAGCGGCTGCCAGCTGCGCGCTGCCAGCCTGCGCGCCGAG
 AGCCGCGGGGAGAAGGCCATCACCCAGGTGAGCAAGGGCACCTGCGAGCAAGGTCCTTCCATAGTGACGC
 CCCCCAAGGACATCTGGAACGTCACTGGTGCCAAGGTGTTCTTGAGCTGTGAGGTCATCGGGATCCCAAC
 CCCTGTCTCATCTGGAACAAGTAAAAAGGGTCACTCTGGAGTTCAGCGGACAGAACTTTGCCTGGT
 GACCGGAAAAATCTGGCCATTGAGACCCGGGTGGTCCAGAAAAGCATGAAGTAACGGGCTGGGTGCTGG
 TATCTCTCTAAGTAAGGAGGACGCTGGAGAGTATGAGTGCCACGCATCCAACCCCAAGGGCAGGCTTC
 CGCGGCAGCCAAAATTACAGTGGTTGATGCCCTCCATGAAATACCACTGAAAAAAGGTGAAGGTGCTCAG
 TTA

AGCGGACCGACGCGTACGCGGCCGCTCGAG - GFP Tag - GTTTAA



[View online »](#)

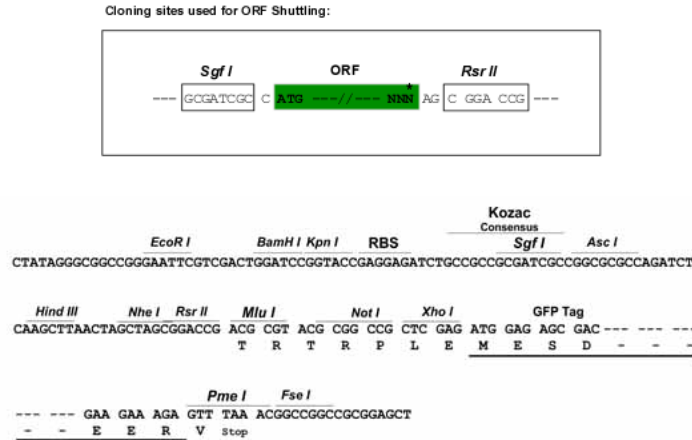
Protein Sequence: >MG203808 representing NM_008048
 Red=Cloning site Green=Tags(s)

MERPPRALLLGAAGLLLLLLPLSSSSSSDACGPCVPASCPALPRLGCPLGETRDACGCCPVCARGEPEPC
 GGAAGGGHCAPGMECVKSRKRRRGKAGAAAGGPATLAVCVCKSRYPVCGSNGITYPSGCQLRAASLRAE
 SRGEKAITQVSKGTCEQGPSIVTPPKDIWNVTGAKVFLSCEVIGIPTVLIWNKVKRHDHSGVQRTELLPG
 DRENLAIQTRGGPEKHEVTGWVLVSPLSKEDAGEYECHASNSQQAASAAKITVVDALHEIPLKKGEGAQ
 L

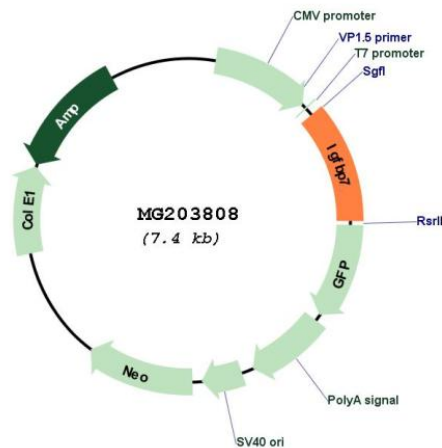
SGPTRRRLE - GFP Tag - V

Restriction Sites: SgfI-RsrII

Cloning Scheme:



Plasmid Map:



ACCN: NM_008048

ORF Size: 843 bp

OTI Disclaimer:	The molecular sequence of this clone aligns with the gene accession number as a point of reference only. However, individual transcript sequences of the same gene can differ through naturally occurring variations (e.g. polymorphisms), each with its own valid existence. This clone is substantially in agreement with the reference, but a complete review of all prevailing variants is recommended prior to use. More info
OTI Annotation:	This clone was engineered to express the complete ORF with an expression tag. Expression varies depending on the nature of the gene.
Components:	The ORF clone is ion-exchange column purified and shipped in a 2D barcoded Matrix tube containing 10ug of transfection-ready, dried plasmid DNA (reconstitute with 100 ul of water).
Reconstitution Method:	<ol style="list-style-type: none">1. Centrifuge at 5,000xg for 5min.2. Carefully open the tube and add 100ul of sterile water to dissolve the DNA.3. Close the tube and incubate for 10 minutes at room temperature.4. Briefly vortex the tube and then do a quick spin (less than 5000xg) to concentrate the liquid at the bottom.5. Store the suspended plasmid at -20°C. The DNA is stable for at least one year from date of shipping when stored at -20°C.
RefSeq:	NM_008048.2 , NP_032074.2
RefSeq Size:	1279 bp
RefSeq ORF:	849 bp
Locus ID:	29817
UniProt ID:	Q61581
Cytogenetics:	5 C3.3
Gene Summary:	Binds IGF-I and IGF-II with a relatively low affinity Stimulates prostacyclin (PGI ₂) production. Stimulates cell adhesion (By similarity).[UniProtKB/Swiss-Prot Function]