

## Product datasheet for **MG203799**

### **Rsrc1 (BC038303) Mouse Tagged ORF Clone**

#### Product data:

Product Type:	Expression Plasmids
Product Name:	Rsrc1 (BC038303) Mouse Tagged ORF Clone
Tag:	TurboGFP
Symbol:	Rsrc1
Synonyms:	1200013F24Rik; SRrp53
Mammalian Cell Selection:	Neomycin
Vector:	pCMV6-AC-GFP (PS100010)
E. coli Selection:	Ampicillin (100 ug/mL)
ORF Nucleotide Sequence:	>MG203799 representing BC038303 Red=Cloning site Blue=ORF Green=Tags(s)

TTTGTAAATACGACTCACTATAGGGCGGCCGGAATTCGTCGACTGGATCCGGTACCGAGGAGATCTGCC  
GCC**CGATCGCC**

ATGGGACGCCGGTCTTCAGACACTGAAGAGGAAAGCAGAAGCAAGAGGAAAAAGAAACACCGAGGCGCT  
CGTCTTCAAGCAGCTCTTCAGACAGCAGGACATACAGCCGCAAGAAGGGCGGGAGGAGCCGAGGTCCGA  
CTCAAGGTCTGGTCTAGAGACCGCCAGCTTCGCTCGATTCTTATGAGAGAAGGCGCAGATCAAGCAGC  
AGCTCTTCTTATGGCTCCAGAAGGAAAAGAAGTCGAGTCGTTCCAGGGCCGAGGGAAACCTATAGAG  
TTCAAAGGTCTCGGTCAAAAAGCAGAACCAGAAGGTCCAGGTCAAGGCCTCGTCCAGCTCACATAGTAG  
AAGCAGTGGAAGATCCAGTCACAGAAGAACCCGTAGCAGGTCCAGGGACAGAGACAGACGTAAAGTCCGG  
GACAAAGAGAAAAGAGAAAAGGAGAAGGATAAAGGCAAGACAAAGAAAGTGCACAGCATCAAACGCGGGG  
ATTCTGGAACATCAAAGCTGGATTAGAATCTGCCTCCAGCTGAGCAGGCCAAAGCCAGACTGCAATT  
GGTCTTGAAGCTGCTGCAAAAGCTGATGAAGCATTAAAGCCAAAGAAAGGAGTGAGGAAGAAGCAAAG  
AGAAGAAAAGAAGAAGACCAAGCCACCCTGGTAGAACAAGTCAAAGAGTAAAGGAAATCGAAGCAATTG  
AAAGTGATTCTTTGTTTCAGCAGACATTCAGATCAAGTAAAGACGTCAAAAAGCTATTTATTGAAAAGGC  
CGAGGCTGAAGAAAAGTGTTCAAGAGATTAATCGCTCTCCGACAAGAAAGGCTGATGGGCAGTCCCGTG  
GCC

**ACGCGT**ACGCGGCCGCTCGAG - GFP Tag - GTTTAA

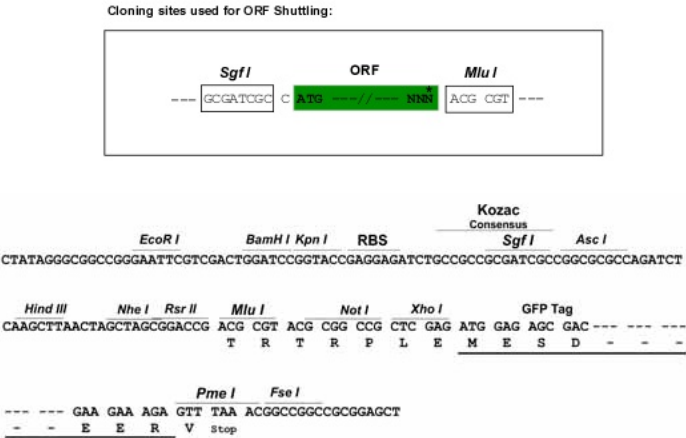

[View online »](#)

**Protein Sequence:** >MG203799 representing BC038303  
 Red=Cloning site Green=Tags(s)

MGRRSSDTEEESRSKRKKKHHRRSSSSSSSDSRTYSRKKGRRPRSDSRWSRDRQLRSHSYERRRRSS  
 SSSYGSRKRKRSRSRGRGKPYRVQSRSRKSRTRRSRPRPRSHSRSSGRSSHRRTRRSRDRDRRKVR  
 DKEKREKEDKGDKEVHSIKRGDSGNIKAGLEHLPPAEQAKARLQLVLEAAAKADEALKAKERSEEEAK  
 RRKEEDQATLVEQVKRVKEIEAIESDSFVQQTFRSSKDVKKLFIEKAEAEKWKRLIALRQERLMGSPV  
 A

**Restriction Sites:** SgfI-MluI

**Cloning Scheme:** TRTRPLE - GFP Tag - V



**ACCN:** BC038303

**ORF Size:** 843 bp

**OTI Disclaimer:** The molecular sequence of this clone aligns with the gene accession number as a point of reference only. However, individual transcript sequences of the same gene can differ through naturally occurring variations (e.g. polymorphisms), each with its own valid existence. This clone is substantially in agreement with the reference, but a complete review of all prevailing variants is recommended prior to use. [More info](#)

**OTI Annotation:** This clone was engineered to express the complete ORF with an expression tag. Expression varies depending on the nature of the gene.

**Components:** The ORF clone is ion-exchange column purified and shipped in a 2D barcoded Matrix tube containing 10ug of transfection-ready, dried plasmid DNA (reconstitute with 100 ul of water).

**Reconstitution Method:**

1. Centrifuge at 5,000xg for 5min.
2. Carefully open the tube and add 100ul of sterile water to dissolve the DNA.
3. Close the tube and incubate for 10 minutes at room temperature.
4. Briefly vortex the tube and then do a quick spin (less than 5000xg) to concentrate the liquid at the bottom.
5. Store the suspended plasmid at -20°C. The DNA is stable for at least one year from date of shipping when stored at -20°C.

**Note:** Plasmids are not sterile. For experiments where strict sterility is required, filtration with 0.22um filter is required.

**RefSeq:** BC038303, AAH38303

**RefSeq Size:** 1182 bp

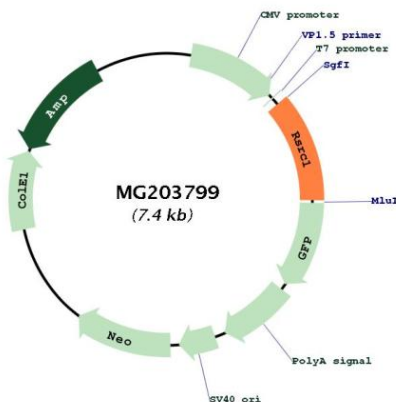
**RefSeq ORF:** 845 bp

**Locus ID:** 66880

**Cytogenetics:** 3 E1

**Gene Summary:** Plays a role in pre-mRNA splicing. Involved in both constitutive and alternative pre-mRNA splicing. May have a role in the recognition of the 3' splice site during the second step of splicing (By similarity).[UniProtKB/Swiss-Prot Function]

## Product images:



Circular map for MG203799