

Product datasheet for **MG203780**

Vsig4 (BC025105) Mouse Tagged ORF Clone

Product data:

Product Type:	Expression Plasmids
Product Name:	Vsig4 (BC025105) Mouse Tagged ORF Clone
Tag:	TurboGFP
Symbol:	Vsig4
Synonyms:	MGC36211, Z39IG, A530061A11
Mammalian Cell Selection:	Neomycin
Vector:	pCMV6-AC-GFP (PS100010)
E. coli Selection:	Ampicillin (100 ug/mL)
ORF Nucleotide Sequence:	>MG203780 representing BC025105 Red=Cloning site Blue=ORF Green=Tags(s)

TTTTGTAATACGACTCACTATAGGGCGGCCGGAATTCGTCGACTGGATCCGGTACCGAGGAGATCTGCC
GCC**CGATCGCC**

ATGGAGATCTCATCAGGCTTGCTGTTCTGGGCCACCTAATAGTGCTCACCTATGGCCACCCACCCCTAA
AAACACCTGAGAGTGTGACAGGGACCTGAAAAGGAGATGTGAAGATTCAGTGCATCTATGATCCCCTGAG
AGGCTACAGGCAAGTTTTGGTGAATGGCTGGTAAGACACGGCTCTGACTCCGTCACCATCTTCTACGT
GACTCCACTGGAGACCATATCCAGCAGGCAAAGTACAGAGGCCGCTGAAAAGTGAGCCACAAAGTCCAG
GAGATGTGTCCCTCCAAATAAATACCCTGCAGATGGATGACAGGAATCACTATAACATGTGAGGTCACCTG
GCAGACTCCTGATGGAAACCAAGTAATAAGAGATAAGATCATTGAGCTCCGTGTTTCGGAAATATAATCCA
CCTAGAATCAATACTGAAGCACCTACAACCTGCACTCCTCTTTGGAAGCAACAATAATGAGTTCAA
CCTCTGACTTGACCACTAATGGGACTGGAAAACCTGAGGAGACATTGCTGGTTCAGGGAGGAACCTGCC
AATCTTTGCCATAATCTTCATCATCTCCCTTTGCTGCATAGTAGCTGTCACCATACCTTATATCTTGTTT
CGCTGCAGGACATTCCAACAAGAGTATGTCTATGGAGTGAGCAGGGTGTTCAGGAGGAAGACAAGCAACT
CTGAAGAAACCACAAGGGTGACTACCATCGCAACTGATGAACCAGATTCCAGGCTCTGATTAGTGACTA
CTCTGATGATCCTTGCCCTCAGCCAGGAGTACCAAATAACCATCAGATCAACAATGTCTATTCTCGCTGC

ACGCGTACGCGGCCGCTCGAG - GFP Tag - GTTTAA



[View online »](#)

Protein Sequence: >MG203780 representing BC025105
Red=Cloning site Green=Tags(s)

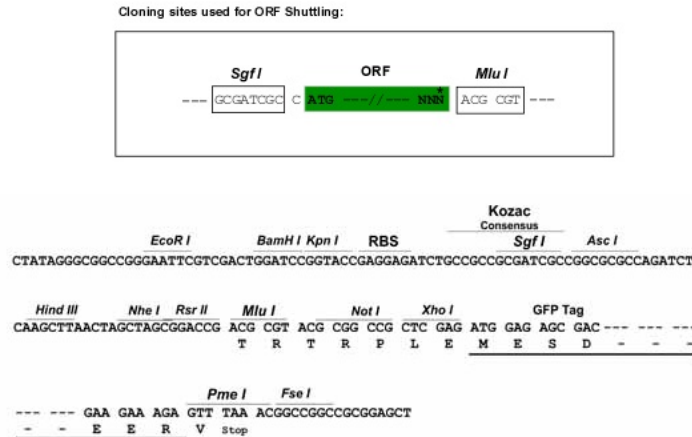
MEISSGLLFLGHLIVLTYGHPTLKTPE SVTGTWKGDVKIQCIYDPLRGYRQVLVKWLVRHGSDSVTIFLR
 DSTGDHIQQA KYRGLK VSHKVP GDVSLQINTLQMDDRNHYTCEVTWQTPDGNQVIRDKIELRVRKYNP
 PRINTEAPTTLHSSLEATTIMSSSDLTTNGTGKLEETIAGSGRNLPFAIFIFIISLCCIVAVTIPYILF
 RCRTFQQEYVYGVSRVFA RKTSNSEETTRVTTIATDEPDSQALISDYSDDPCLSQEYQITIRSTMSIPAC

TRTRPLE - GFP Tag - V

Chromatograms: https://cdn.origene.com/chromatograms/ja1694_a07.zip

Restriction Sites: SgfI-MluI

Cloning Scheme:



ACCN: BC025105

ORF Size: 840 bp

OTI Disclaimer: The molecular sequence of this clone aligns with the gene accession number as a point of reference only. However, individual transcript sequences of the same gene can differ through naturally occurring variations (e.g. polymorphisms), each with its own valid existence. This clone is substantially in agreement with the reference, but a complete review of all prevailing variants is recommended prior to use. [More info](#)

OTI Annotation: This clone was engineered to express the complete ORF with an expression tag. Expression varies depending on the nature of the gene.

Components: The ORF clone is ion-exchange column purified and shipped in a 2D barcoded Matrix tube containing 10ug of transfection-ready, dried plasmid DNA (reconstitute with 100 ul of water).

Reconstitution Method:

1. Centrifuge at 5,000xg for 5min.
2. Carefully open the tube and add 100ul of sterile water to dissolve the DNA.
3. Close the tube and incubate for 10 minutes at room temperature.
4. Briefly vortex the tube and then do a quick spin (less than 5000xg) to concentrate the liquid at the bottom.
5. Store the suspended plasmid at -20°C. The DNA is stable for at least one year from date of shipping when stored at -20°C.

Note: Plasmids are not sterile. For experiments where strict sterility is required, filtration with 0.22um filter is required.

RefSeq: [BC025105](#), [AAH25105](#)

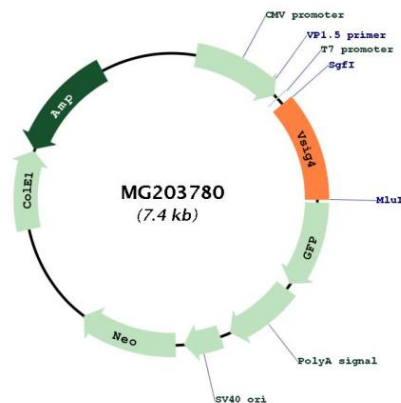
RefSeq Size: 1423 bp

RefSeq ORF: 842 bp

Locus ID: 278180

Cytogenetics: X C3

Product images:



Circular map for MG203780