

## Product datasheet for **MG203773**

### **Fhl4 (NM\_010214) Mouse Tagged ORF Clone**

#### Product data:

Product Type:	Expression Plasmids
Product Name:	Fhl4 (NM_010214) Mouse Tagged ORF Clone
Tag:	TurboGFP
Symbol:	Fhl4
Mammalian Cell Selection:	Neomycin
Vector:	pCMV6-AC-GFP (PS100010)
E. coli Selection:	Ampicillin (100 ug/mL)
ORF Nucleotide Sequence:	>MG203773 representing NM_010214 Red=Cloning site Blue=ORF Green=Tags(s)

TTTTGTAATACGACTCACTATAGGGCGGCCGGAATTCGTCGACTGGATCCGGTACCGAGGAGATCTGCC  
GCC**CGATCGCC**

ATGTCTGAGTTCAAATGCCACCATTGCGAGGAATCCTTGCAAGGTAAAAAGTATGTGCAGAAGGATGGAG  
CCAACACTGTGTGACATGCTTTGACTCGCATTGTGCCAATATCTGTGAGGAATGCCACAAGCCCATAGG  
TGCAGATTCCAAGGAGGTGTGTTATAAGGAGCAATCTGGCACAACACCTGCTTCAAATGTTCCAAGTGT  
TCTCAACTCTTGGCTACTGAGACCTTTGTTGCCCTGGGACAAGAATATCCTGTGCAACAAGTGTGCCACTC  
GAGTCACCTTCCCAAGTGCAAAGGGTGCCTCAAAGATATTGAGGAAGGAGACCATAATGTGGAATACAA  
AGGTAGTATCTGGCATAAAAACTGCTTTGTCTGCACCAACTGCAAGGACATCATTGGAACCAAAAAATTC  
TTCCCTAAAGATGAGGGATTCTACTGTGTGACTTGTTATGATGCCTTGTTTACCAAGCATTGTATGAAAT  
GCAAAAAGCCCATCACATCTGGAGGAGTCAGTTACCAGGATCAGCCCTGGCATAGTGAGTGCTTTGTATG  
TGTTTCTGCTCTAAGGAGCTGAGTGGACAGCGTTTCACTGCTATGGATGACCAGTATTTTTGTGTGGAT  
TGCTACAAGAATAATAGCCAAGAAGTGTGCTGGGTGCAAGAACCCCATCACTGGGTTTGGTAAAGGCG  
CCAATGTGGTGGCCCATGAGCAGAATTCCTGGCATGACTACTGCTTCAACTGCAAAACCTGTTCTGTAA  
TCTAGCCAATAAGCACTTTGTGTTTCATGATGAGCAGGTACTGTCCTGACTGTGCCAGAAATCTA

**ACGCGT**ACGCGGCCGCTCGAG - GFP Tag - GTTTAA



[View online »](#)

**Protein Sequence:** >MG203773 representing NM\_010214  
Red=Cloning site Green=Tags(s)

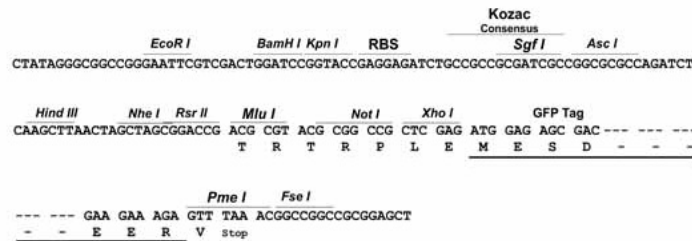
MSEFKCHHCEESLQGGKYYQKDGANYCVTCFDSHCANICQECHKPIGADSKEVCYKEQFWHNTCFKCSKC  
 SLLLATETFVAWDKNILCNKCATRVTFPKCKGCLKDIEEGDHNVEYKGSIWHKNCVFCTNCKDIIGTKNF  
 FPKDEGFYCVTCYDALFTKHKMKCKKPIITSGGVS YQDQPHWSECFVCVSCSKELSGQRF TAMDDQYFCVD  
 CYKNYIAKKCAGCKNPITGFGKANVVAHEQNSWHDYCFNCKTCSVNLANKHFVFHDEQVYCPDCARNL

TRTRPLE - GFP Tag - V

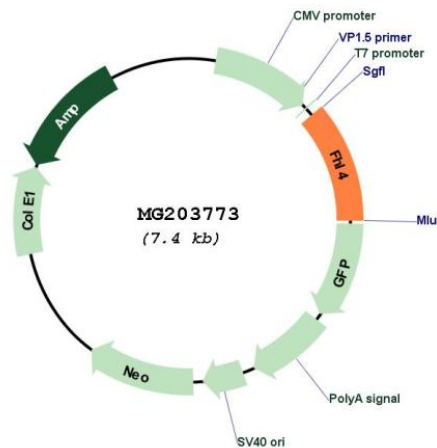
**Restriction Sites:** SgfI-MluI

**Cloning Scheme:**

Cloning sites used for ORF Shuttling:



**Plasmid Map:**



**ACCN:** NM\_010214

**ORF Size:** 837 bp

<b>OTI Disclaimer:</b>	The molecular sequence of this clone aligns with the gene accession number as a point of reference only. However, individual transcript sequences of the same gene can differ through naturally occurring variations (e.g. polymorphisms), each with its own valid existence. This clone is substantially in agreement with the reference, but a complete review of all prevailing variants is recommended prior to use. <a href="#">More info</a>
<b>OTI Annotation:</b>	This clone was engineered to express the complete ORF with an expression tag. Expression varies depending on the nature of the gene.
<b>Components:</b>	The ORF clone is ion-exchange column purified and shipped in a 2D barcoded Matrix tube containing 10ug of transfection-ready, dried plasmid DNA (reconstitute with 100 ul of water).
<b>Reconstitution Method:</b>	<ol style="list-style-type: none"><li>1. Centrifuge at 5,000xg for 5min.</li><li>2. Carefully open the tube and add 100ul of sterile water to dissolve the DNA.</li><li>3. Close the tube and incubate for 10 minutes at room temperature.</li><li>4. Briefly vortex the tube and then do a quick spin (less than 5000xg) to concentrate the liquid at the bottom.</li><li>5. Store the suspended plasmid at -20°C. The DNA is stable for at least one year from date of shipping when stored at -20°C.</li></ol>
<b>RefSeq:</b>	<a href="#">NM_010214.4</a> , <a href="#">NP_034344.2</a>
<b>RefSeq Size:</b>	2583 bp
<b>RefSeq ORF:</b>	840 bp
<b>Locus ID:</b>	14202
<b>Cytogenetics:</b>	10 C1