

Product datasheet for **MG203749**

M6pr (NM_010749) Mouse Tagged ORF Clone

Product data:

Product Type:	Expression Plasmids
Product Name:	M6pr (NM_010749) Mouse Tagged ORF Clone
Tag:	TurboGFP
Symbol:	M6pr
Synonyms:	CD-MPR; Mpr46
Mammalian Cell Selection:	Neomycin
Vector:	pCMV6-AC-GFP (PS100010)
E. coli Selection:	Ampicillin (100 ug/mL)
ORF Nucleotide Sequence:	>MG203749 representing NM_010749 Red=Cloning site Blue=ORF Green=Tags(s)

TTTTGTAATACGACTCACTATAGGGCGGCCGGAATTCGTCGACTGGATCCGGTACCGAGGAGATCTGCC
GCC**CGATCGCC**

ATGTTCCCTTCTCTGGCTGCTGGAGGACTGAACTGTTATTGTTGCTACTCCTGGCTGTGGCTGTGAGAG
AATCCTGGCAGATAGAAGAAAAATCGTGTGACCTGGTAGGAGAGAAGGATAAGGAGTCAAAGAACGAGGT
GGCTCTCCTGGAGAGTTACGGCCACTGTTTAACAAAAGTTTTGAGAGTACTGTGGCCAGGGCTCAGAC
ACATACAGCTACATATTCAGAGTATGCCGGAAGCTAGCAACCACTCCTCTGGAGCAGGCCTGGTCCAGA
TCAACAAAAGCAATGACAAGGAGACAGTGGTTGGGAGAATCAACGAGACTCACATCTTCAATGGAAGTAA
TTGGATCATGCTGATATATAAAGGGGGTATGAATATGACAACCACTGTGGCAAAGAGCAGCGCCGTGCA
GTGGTATGATCTCCTGCAATCGGCACACACTAGCGGCTAATTTTAACCCAGTGTCTGAGGAACGAGGCA
AAGTCCAGGATTGCTTCTACCTCTTTGAGATGGATAGCAGCCTGGCCTGTTACCAGAGGTCTCACACCT
CAGTGTGGGCTCGATCTTACTTGTATATTTGCATCATTGGTTGCTGTCTATATCATTGGGGTTTCTTA
TACCAGCGACTGGTAGTGGGGCCAAGGGAATGGAGCAGTTTCTCATCTGGCCTTCTGGCAGGATCTTG
GCAACCTAGTAGCTGATGGTTGTGACTTTGTGTCCGATCCAACCCCGCAATGTGCCTGCAGCATATCG
TGGAGTGGGAGATGACCAGCTGGGGGAAGAGTCGGAAGAAAGGGATGATCATCTGCTACCAATG

ACGCGTACGCGGCCGCTCGAG - GFP Tag - GTTTAA



[View online »](#)

Protein Sequence: >MG203749 representing NM_010749
 Red=Cloning site Green=Tags(s)

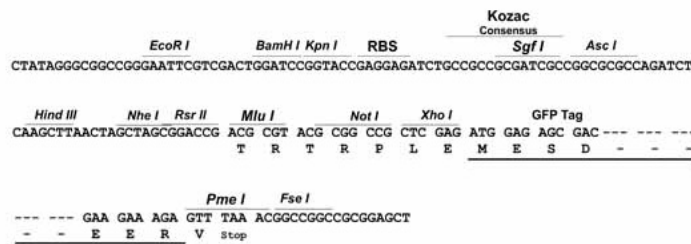
MFPFSGCWRETELLLLLLLAVAVRESWQIEEKSCDLVGEKDKEKNEVALLERLRPLFNKSFESTVGGQSD
 TYSYIFRVCREASNHSSGAGLVQINKSNDKETVVGRINETHIFNGSNWIMLIYKGGDEYDNHCGKEQRRR
 VVMISCNRHTLAANFNVPVSEERKVVQDFYLFEMDSSLACSPVSHLSVGSILLVIFASLVAVYIIGGFL
 YQRLVVGAKGMEQFPHLAFWQDLGNLVADGDFVCRSKPRNVPAAYRGGVDDQLGEESEERDDHLLPM

TRTRPLE - GFP Tag - V

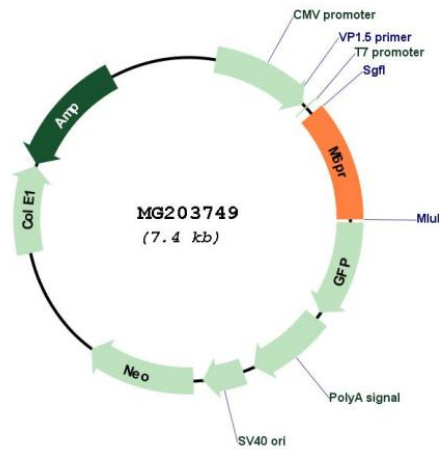
Restriction Sites: SgfI-MluI

Cloning Scheme:

Cloning sites used for ORF Shutting:



Plasmid Map:



ACCN: NM_010749

ORF Size: 834 bp

OTI Disclaimer:	The molecular sequence of this clone aligns with the gene accession number as a point of reference only. However, individual transcript sequences of the same gene can differ through naturally occurring variations (e.g. polymorphisms), each with its own valid existence. This clone is substantially in agreement with the reference, but a complete review of all prevailing variants is recommended prior to use. More info
OTI Annotation:	This clone was engineered to express the complete ORF with an expression tag. Expression varies depending on the nature of the gene.
Components:	The ORF clone is ion-exchange column purified and shipped in a 2D barcoded Matrix tube containing 10ug of transfection-ready, dried plasmid DNA (reconstitute with 100 ul of water).
Reconstitution Method:	<ol style="list-style-type: none">1. Centrifuge at 5,000xg for 5min.2. Carefully open the tube and add 100ul of sterile water to dissolve the DNA.3. Close the tube and incubate for 10 minutes at room temperature.4. Briefly vortex the tube and then do a quick spin (less than 5000xg) to concentrate the liquid at the bottom.5. Store the suspended plasmid at -20°C. The DNA is stable for at least one year from date of shipping when stored at -20°C.
RefSeq:	NM_010749.6 , NP_034879.2
RefSeq Size:	2258 bp
RefSeq ORF:	837 bp
Locus ID:	17113
UniProt ID:	P24668
Cytogenetics:	6 57.52 cM
Gene Summary:	Transport of phosphorylated lysosomal enzymes from the Golgi complex and the cell surface to lysosomes. Lysosomal enzymes bearing phosphomannosyl residues bind specifically to mannose-6-phosphate receptors in the Golgi apparatus and the resulting receptor-ligand complex is transported to an acidic prelysosomal compartment where the low pH mediates the dissociation of the complex.[UniProtKB/Swiss-Prot Function]