

Product datasheet for **MG203733**

Cbr3 (NM_173047) Mouse Tagged ORF Clone

Product data:

Product Type: Expression Plasmids
Product Name: Cbr3 (NM_173047) Mouse Tagged ORF Clone
Tag: TurboGFP
Symbol: Cbr3
Synonyms: 1110001J05Rik; C81353
Mammalian Cell Selection: Neomycin
Vector: pCMV6-AC-GFP (PS100010)
E. coli Selection: Ampicillin (100 ug/mL)
ORF Nucleotide Sequence: >MG203733 representing NM_173047
Red=Cloning site Blue=ORF Green=Tags(s)

TTTTGTAATACGACTCACTATAGGGCGGCCGGAATTCGTCGACTGGATCCGGTACCGAGGAGATCTGCC
GCC**CGATCGCC**

ATGTCGTCCTGCAGCCGCGTGGCCCTGGTAACTGGGGCTAACAAAGGCATCGGCTTTGCGATCACGCGTG
ACCTGTGTCGGAAATTCTCCGGGACGTGGTGCTCACGGCGCGGACGAGGCGCGGGCCGCGCGGCGGT
GCAGCAGCTGCAGGCGGAGGGCCTGAGCCACGCTTCCACCAGCTGGACATCGACGACCCGAGAGCATC
CGTGCCTGCGCGACTTTCTGCGCAAGGAGTACGGGGACTTAACTGCTGGTCAACAACGCGGGCATCG
CCTTTAGAATGGATGACCAACACCCTTCGACATTCAAGCTGAGGTGACTGAAGACGAACTTTTTTGC
CACTAGAAATGTCTGACTGAGTTACTGCCTATAATGAAACCACATGGTAGAGTGGTGAACATCAGCAGT
CTGCAGGGGTTAAAAGCCCTTGAGAACTGCAGGGAAGATCTTCAGGAAAAGTTCCGATGTGACACTTA
CCGAGGTGGACCTGGTCGACCTCATGAAAAAGTTTGTGGAGGATACAAAAATGAAGTCCATGAGAGGGA
AGGTTGGCCAGACTCGGCTTACGGGGTGTGCAAGCTGGGGTGACAGTCTTACGAGGATCTCGCCCGG
CAGCTGGATGAAAAGAGGAAAGCGGACAGGATTCTGCTCAATGCCTGCTGCCCGGATGGGTGAAGACCG
ACATGGCGAGGGACCAGGGCTCCCGACCGTGAAGAGGGGGCCGAAACCCCGTTTACTTGCTCTCCT
GCCTCCAGATGCCACTGAACTCACGGCCAGCTAGTCCGTGACAAAGTTGTGCAAAGTTGG

AC**CGGCCCGCTCGAG** - GFP Tag - GTTTAA



[View online »](#)

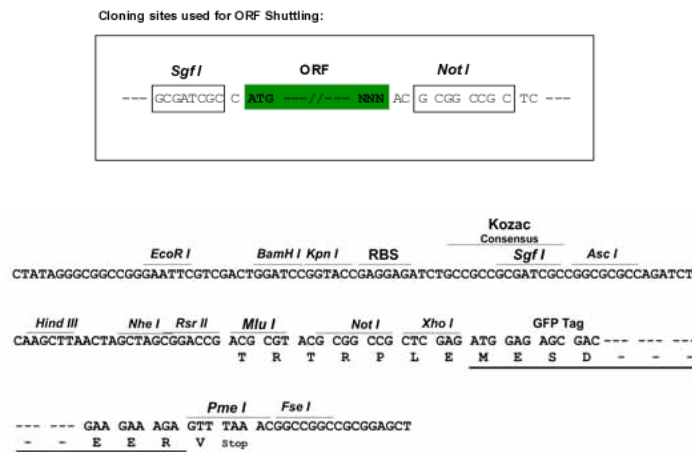
Protein Sequence: >MG203733 representing NM_173047
Red=Cloning site Green=Tags(s)

MSSCSRVALVTGANKGIGFAITRDLCRKFSGDVVLARDEARGRAAVQQLQAEGLSPRFHQLDIDDPQSI
 RALRDFLRKEYGGLNVLVNNAGIAFRMDDPTPFDIQAEVTLKTNFFATRNVCTELLPIMKPHGRVNNISS
 LQGLKALENCREDLQEKFRCDTLTEVDLVLMKKFVEDTKNEVHEREGWPDAYSAYGSKLGVTVLTRLAR
 QLDEKRRADRILLNACCPGWVKDMARDQGSRTVEEGAETPVYLLALLPPDATEPHGQLVRDKVVQTW

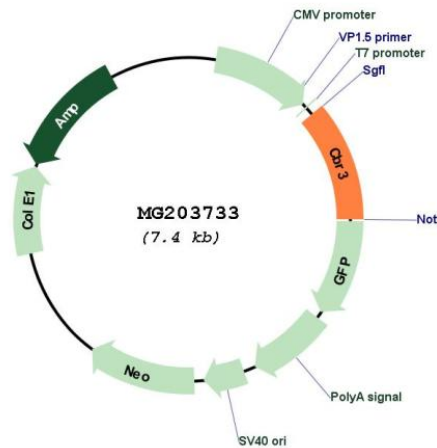
TRPLE - GFP Tag - V

Restriction Sites: Sgfl-NotI

Cloning Scheme:



Plasmid Map:



ACCN: NM_173047

ORF Size: 831 bp

OTI Disclaimer:	The molecular sequence of this clone aligns with the gene accession number as a point of reference only. However, individual transcript sequences of the same gene can differ through naturally occurring variations (e.g. polymorphisms), each with its own valid existence. This clone is substantially in agreement with the reference, but a complete review of all prevailing variants is recommended prior to use. More info
OTI Annotation:	This clone was engineered to express the complete ORF with an expression tag. Expression varies depending on the nature of the gene.
Components:	The ORF clone is ion-exchange column purified and shipped in a 2D barcoded Matrix tube containing 10ug of transfection-ready, dried plasmid DNA (reconstitute with 100 ul of water).
Reconstitution Method:	<ol style="list-style-type: none">1. Centrifuge at 5,000xg for 5min.2. Carefully open the tube and add 100ul of sterile water to dissolve the DNA.3. Close the tube and incubate for 10 minutes at room temperature.4. Briefly vortex the tube and then do a quick spin (less than 5000xg) to concentrate the liquid at the bottom.5. Store the suspended plasmid at -20°C. The DNA is stable for at least one year from date of shipping when stored at -20°C.
RefSeq:	NM_173047.3
RefSeq Size:	1198 bp
RefSeq ORF:	834 bp
Locus ID:	109857
UniProt ID:	Q8K354
Cytogenetics:	16 54.58 cM
Gene Summary:	Has low NADPH-dependent oxidoreductase activity towards 4-benzoylpyridine and menadione (in vitro).[UniProtKB/Swiss-Prot Function]