

## Product datasheet for **MG203719**

### Mad2l1bp (NM\_025649) Mouse Tagged ORF Clone

#### Product data:

Product Type:	Expression Plasmids
Product Name:	Mad2l1bp (NM_025649) Mouse Tagged ORF Clone
Tag:	TurboGFP
Symbol:	Mad2l1bp
Synonyms:	0610009D16Rik; 2510031P20Rik; AU018945; AW550977; C76045; CMT2A; CMT2B; Mad2lbp; mKIAA0110
Mammalian Cell Selection:	Neomycin
Vector:	pCMV6-AC-GFP (PS100010)
E. coli Selection:	Ampicillin (100 ug/mL)
ORF Nucleotide Sequence:	>MG203719 representing NM_025649 Red=Cloning site Blue=ORF Green=Tags(s)

TTTTGTAATACGACTCACTATAGGGCGGCCGGAATTCGTCGACTGGATCCGGTACCGAGGAGATCTGCC  
GCC**CGATCGCC**

ATGGCTGCGTCCGGTGAGGAGGATATGTCCGAAGTGTCCCTGCTGCTGCCCAAATTTGGATTGGTATG  
AGAAGCCGGAAGAACTCATGCTCCTGAAGTAGATCTTGAGACTGTCATCCCGCCAGCCAGGAACCTTC  
CAATCCTGCGGAGCCCTTTGCCCCAAGAGACCTGGTGCCGGTGGTGTTCGCCGGCCTGTGAGCCAGGAA  
GACTGCTGCCAGTTTACTTGTGAAGTCTCAAGCATATCCTGTACCAGCGCCATCAGCTCCCTCTGCCCT  
ATGAACAGCTGAAGCACTTCTACCGAAAGCTCCCAGGCAGAGGACACAGCAAGGAAGAAAGCTTGGCT  
CGCCACGGAGGCGAGGAACAGGAAGTGTACAGAGGCTTTGGCGGAGCTGGAGAGCGTCCTCAGTCACCTA  
CGAGACTTCTTTGCCCGGACACTCGTACCACAAGTGTGATCCTTCTGGAGGCAATGCCCTCAGCCCTA  
AAGAAATCTATGAACTTGACCTGTCCAGGCTGGCTCCATTTCGGTGTGGACCAGGGCTGAACACGGCGGC  
TTGCTTGCCTCGTCTCTTTCAGAGCCATCTTCTGGCGGATCCATTTAGCGAACTGCAGACTCCCCGGCTC  
ATGGGTACCATTGTCATGGTTACAGGCCACCGTGACTGTGGAGAAGATTGGTTTCAACCGAACTGAACT  
ACCGGGTCCCCAGCCGGGCCACAACTCACCGTGACTGTCATGTGGCAGACCTTCCGTCCCAGCCAT  
GGCTTCAGAGGATTACATTTGGTTCCAGGCACCGGTGACACTTAAAGGTTTTTCATGAG

**ACGCGT**ACGCGGCCGCTCGAG - GFP Tag - GTTTAA



[View online »](#)

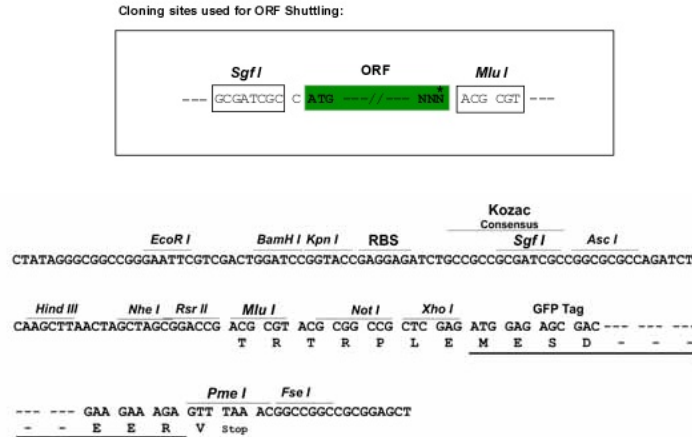
**Protein Sequence:** >MG203719 representing NM\_025649  
Red=Cloning site Green=Tags(s)

MAASGEEDMSELSPAAAPNLDWYEKPEETHAPEVDLETVIPPAQEPSNPAEPFCPRDLVPVVFPGPVSQE  
 DCCQFTCELLKHILYQRHQLPLPYEQLKHFYRKAPQAEDTARKKAWLATEARNRKCQALAEESVLSHL  
 RdffARTLVPQVILLGGNALSPKEFYELDL SRLAPFGVDQGLNTAACLRRLFRAIFLADPFSELQTPPL  
 MGTIVMVQGHRCGEDWFPKLNRYRVP SRGHKLTVTLSCGRPSVPAMASEDYIWFQAPVTLKGFHE

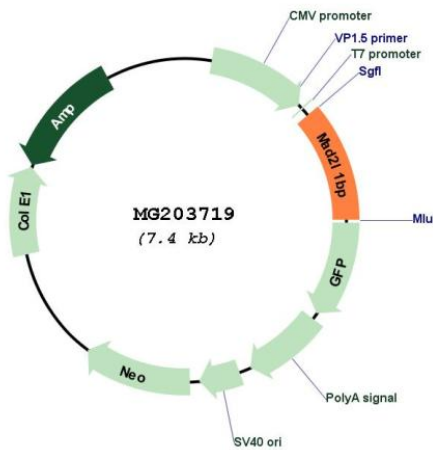
TRTRPLE - GFP Tag - V

**Restriction Sites:** SgfI-MluI

**Cloning Scheme:**



**Plasmid Map:**



**ACCN:** NM\_025649

**ORF Size:** 828 bp

<b>OTI Disclaimer:</b>	The molecular sequence of this clone aligns with the gene accession number as a point of reference only. However, individual transcript sequences of the same gene can differ through naturally occurring variations (e.g. polymorphisms), each with its own valid existence. This clone is substantially in agreement with the reference, but a complete review of all prevailing variants is recommended prior to use. <a href="#">More info</a>
<b>OTI Annotation:</b>	This clone was engineered to express the complete ORF with an expression tag. Expression varies depending on the nature of the gene.
<b>Components:</b>	The ORF clone is ion-exchange column purified and shipped in a 2D barcoded Matrix tube containing 10ug of transfection-ready, dried plasmid DNA (reconstitute with 100 ul of water).
<b>Reconstitution Method:</b>	<ol style="list-style-type: none"><li>1. Centrifuge at 5,000xg for 5min.</li><li>2. Carefully open the tube and add 100ul of sterile water to dissolve the DNA.</li><li>3. Close the tube and incubate for 10 minutes at room temperature.</li><li>4. Briefly vortex the tube and then do a quick spin (less than 5000xg) to concentrate the liquid at the bottom.</li><li>5. Store the suspended plasmid at -20°C. The DNA is stable for at least one year from date of shipping when stored at -20°C.</li></ol>
<b>RefSeq:</b>	<a href="#">NM_025649.1</a> , <a href="#">NP_079925.1</a>
<b>RefSeq Size:</b>	1254 bp
<b>RefSeq ORF:</b>	831 bp
<b>Locus ID:</b>	66591
<b>UniProt ID:</b>	<a href="#">Q9DCX1</a>
<b>Cytogenetics:</b>	17 C
<b>Gene Summary:</b>	May function to silence the spindle checkpoint and allow mitosis to proceed through anaphase by binding MAD2L1 after it has become dissociated from the MAD2L1-CDC20 complex.[UniProtKB/Swiss-Prot Function]