

Product datasheet for **MG203713**

Sntb1 (BC003748) Mouse Tagged ORF Clone

Product data:

Product Type:	Expression Plasmids
Product Name:	Sntb1 (BC003748) Mouse Tagged ORF Clone
Tag:	TurboGFP
Symbol:	Sntb1
Mammalian Cell Selection:	Neomycin
Vector:	pCMV6-AC-GFP (PS100010)
E. coli Selection:	Ampicillin (100 ug/mL)
ORF Nucleotide Sequence:	>MG203713 representing BC003748 Red=Cloning site Blue=ORF Green=Tags(s)

TTTTGTAATACGACTCACTATAGGGCGGCCGGGAATTCGTCGACTGGATCCGGTACCGAGGAGATCTGCC
GCC**CGATCGCC**

ATGGCGGTAGCGGCAGCGGCTGTGGCTGCGCCGGCTGGCGGTGGAGGCGCCCGGGCGCAGCGGAGCGGAC
TGCTGGAAGTTTTGGTGCGGGATCGCTGGCATAAAGTTCTGGTGAACCTTGAGCGAGGACGCCCTGGTGT
GAGCTGCGAGGAGGGCGCTGCGGCGTACAACGGCATAGGGGCTGCCACCAATGGTTCGTTCTGCAGGGGC
TCCGGGACCGGGCACCCGGTCCCGGTGTCGCTCAAGCCCCGACTCTCCCGCCGGGTCCGCACCCGCT
TCACCGACCTCCCGGAGCAGGTACCTGAGTCCATCTCAAACAGAAAGAGGGGCGTGAAGGTGCTGAAGCA
GGAGCTGGGCGGGCTGGCATTAGCATCAAAGGGGCAAGGAAAACAAGATGCCATACTCATCAGCAAG
ATCTTCAAGGGGCTGGCAGCGGATCAGACCCAAGCCCTGTATGTGGCGATGCCATCCTGTCGGTGAACG
GAGCAGACCTGCGGGACGCCACCCACGACGAGGCAGTGCAGGCATTGAAGCGCGCAGGCAAGGAAGTGT
GCTGGAAGTGAAGTATATGAGAGAAGCCACACCTTACGTGAAGAAAGGTCCCGGTGCTGAGATTGGA
TGGGAAACACCTCCACCTGAGTCTCCAAGATTAGGGGTTGGCTCTGCAGAGCCTCTGTCATCCCAGTCT
TCTCCTCCATAGAGACCGAAAAGCATCCCCCTCAAGATGTGTTATGTCACCCGGAACATGACCTTGGC
TGACCCTGAAAACAGCACCCATCTAGTGACCTCATACCAATACAAGGATGGGCTGCT

ACGCGTACGCGGCCGCTCGAG - GFP Tag - GTTTAA



[View online »](#)

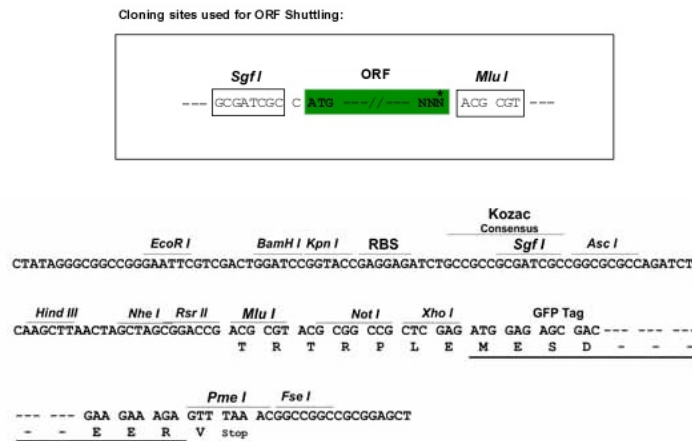
Protein Sequence: >MG203713 representing BC003748
Red=Cloning site Green=Tags(s)

MAVAAAVAAPAGGGGARAQRSGLLLEVLVRDRWHKVLVNLSEDALVLSCEEGAAAYNGIGAATNGSFCRG
 SGTGHPVPGVAQAPDSPAGVRTAFTDLPEQVPESISNQKRGVKVLKQELGGLGISIKGGKENKMPILISK
 IFKGLAADQTQALYVGDAILSVNGADLRDATHDEAVQALKRAGKEVLLVVKYMRATPYVKKGSPVSEIG
 WETPPPEPRLGGGSAEPLSSQSF5FHRDRKSIPLKMCYVTRNMTLADPENSTHPSDLIPIQGWAA

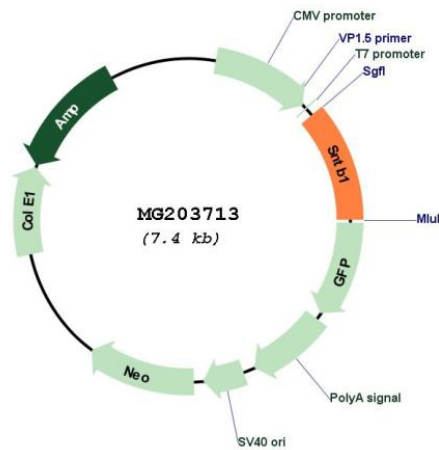
TRTRPLE - GFP Tag - V

Restriction Sites: SgfI-MluI

Cloning Scheme:



Plasmid Map:



ACCN: BC003748

ORF Size: 830 bp

OTI Disclaimer:	The molecular sequence of this clone aligns with the gene accession number as a point of reference only. However, individual transcript sequences of the same gene can differ through naturally occurring variations (e.g. polymorphisms), each with its own valid existence. This clone is substantially in agreement with the reference, but a complete review of all prevailing variants is recommended prior to use. More info
OTI Annotation:	This clone was engineered to express the complete ORF with an expression tag. Expression varies depending on the nature of the gene.
Components:	The ORF clone is ion-exchange column purified and shipped in a 2D barcoded Matrix tube containing 10ug of transfection-ready, dried plasmid DNA (reconstitute with 100 ul of water).
Reconstitution Method:	<ol style="list-style-type: none">1. Centrifuge at 5,000xg for 5min.2. Carefully open the tube and add 100ul of sterile water to dissolve the DNA.3. Close the tube and incubate for 10 minutes at room temperature.4. Briefly vortex the tube and then do a quick spin (less than 5000xg) to concentrate the liquid at the bottom.5. Store the suspended plasmid at -20°C. The DNA is stable for at least one year from date of shipping when stored at -20°C.
RefSeq:	BC003748 , AAH03748
RefSeq Size:	1239 bp
RefSeq ORF:	830 bp
Locus ID:	20649
Cytogenetics:	15 22.14 cM
Gene Summary:	Adapter protein that binds to and probably organizes the subcellular localization of a variety of membrane proteins. May link various receptors to the actin cytoskeleton and the dystrophin glycoprotein complex.[UniProtKB/Swiss-Prot Function]