

Product datasheet for **MG203698**

Cox11 (NM_199008) Mouse Tagged ORF Clone

Product data:

Product Type:	Expression Plasmids
Product Name:	Cox11 (NM_199008) Mouse Tagged ORF Clone
Tag:	TurboGFP
Symbol:	Cox11
Synonyms:	2010004I09Rik
Mammalian Cell Selection:	Neomycin
Vector:	pCMV6-AC-GFP (PS100010)
E. coli Selection:	Ampicillin (100 ug/mL)
ORF Nucleotide Sequence:	>MG203698 representing NM_199008 Red=Cloning site Blue=ORF Green=Tags(s)

TTTTGTAATACGACTCACTATAGGGCGGCCGGAATTCGTCGACTGGATCCGGTACCGAGGAGATCTGCC
GCC**CGATCGCC**

ATGGGAGGGCTCTGGTGTCCGGGATGGAGGTTGGTGGCTTCGTGTGGCCGGGGCTGGAGGCACCCGGGT
GGTCAGGGCGGACTGTGGTGAACGCAGAGCTGGTGCTTAGGCCCGGGTGGGATGGGCTCGGAGGCAGCGGA
GCGGGGTCTGAGACGCCCTCGGGACATGGAAGCGCCCGTGCGGGGTCCGGGGCCCGCAGCAGCCGCCA
CGGCGGCCGAGGAGCAGCAACCCCTTCCAGCGCGCAGGAGGACGAGTGGCGGGCGGGAACAAGACGG
TGCTCACCTACGTGGCCGCGCCCGTGGGCATGCTGGGGCCCTCCTACGCCGGTGCCCTCTATCG
GCTCTACTGCCAGACTACTGGACTTGGAGGATCAGCAGTGGCCGGGCACTCCTCAGACCAGATCGAGAAC
ATGGTGCCTGTCAAGGACCGGGTCATTAAGGTCACCTTCAATGCTGACGTTTCATGCCAGTCTCCAGTGGA
ACTTCAGACCTCAGCAAACAGAGATCTATGTGGTACCAGGAGAGACTGCACTGGCATTATATAAAGCTAA
GAATCCTACTGACAAACCAGTAATTGGAATTTCTACATAAATGTTGTACCGTTTGAAGCTGGACAGTAT
TTCAATAAGATACAGTGCTTCTGTTTTGAAGAACAAGGCTTAATCCACAAGAAGAAGTAGATATGCCAG
TGTTTTTCTACATTGATCCTGAATTTGCAGAAGATCCAAGAATGGTGAATGTCGACCTCATCACTTTTC
TTACACTTTTTTTGAAGCAAAGGAAGGGCACAAGTTGCCAGTTCAGGCTATAAT

ACGCGTACGCGGCCGCTCGAG - GFP Tag - GTTTAA



[View online »](#)

Protein Sequence: >MG203698 representing NM_199008
 Red=Cloning site Green=Tags(s)

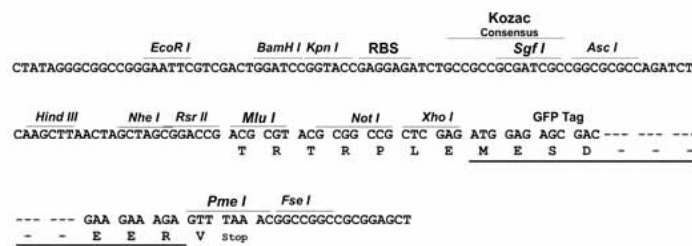
MGGLWCPGWRLVASCGRGWRQPGWSGRTVVNAELVLRPGWDGLGGAERGLRRLGTWKRPCGVRGPATQPP
 RRPSSNPFQRAQEDWRRRNTVLTYVAAAAGMLGASYAAVPLYRLYCQTTGLGGSVAVAGHSSDQIEN
 MYPVKDRVIKVTFNADVHASLQWNFRPQQTEIYVVPGETALAFYKAKNPTDKPVIIGISTYNNVVPFEAGQY
 FNKIQCFCFEEQRLNPQEEVDMPVFFYIDPEFAEDPRMVNDLITLSYTFEAKEGHKLPVPGYN

TRTRPLE - GFP Tag - V

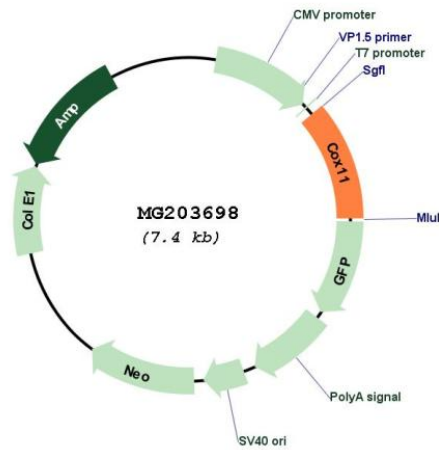
Restriction Sites: SgfI-MluI

Cloning Scheme:

Cloning sites used for ORF Shutting:



Plasmid Map:



ACCN: NM_199008

ORF Size: 825 bp

OTI Disclaimer:	The molecular sequence of this clone aligns with the gene accession number as a point of reference only. However, individual transcript sequences of the same gene can differ through naturally occurring variations (e.g. polymorphisms), each with its own valid existence. This clone is substantially in agreement with the reference, but a complete review of all prevailing variants is recommended prior to use. More info
OTI Annotation:	This clone was engineered to express the complete ORF with an expression tag. Expression varies depending on the nature of the gene.
Components:	The ORF clone is ion-exchange column purified and shipped in a 2D barcoded Matrix tube containing 10ug of transfection-ready, dried plasmid DNA (reconstitute with 100 ul of water).
Reconstitution Method:	<ol style="list-style-type: none">1. Centrifuge at 5,000xg for 5min.2. Carefully open the tube and add 100ul of sterile water to dissolve the DNA.3. Close the tube and incubate for 10 minutes at room temperature.4. Briefly vortex the tube and then do a quick spin (less than 5000xg) to concentrate the liquid at the bottom.5. Store the suspended plasmid at -20°C. The DNA is stable for at least one year from date of shipping when stored at -20°C.
RefSeq:	NM_199008.2 , NP_950173.1
RefSeq Size:	2259 bp
RefSeq ORF:	828 bp
Locus ID:	69802
UniProt ID:	Q6P8I6
Cytogenetics:	11 D
Gene Summary:	Exerts its effect at some terminal stage of cytochrome c oxidase synthesis, probably by being involved in the insertion of the copper B into subunit I.[UniProtKB/Swiss-Prot Function]