

Product datasheet for **MG203686**

Nubp2 (NM_011956) Mouse Tagged ORF Clone

Product data:

Product Type: Expression Plasmids
Product Name: Nubp2 (NM_011956) Mouse Tagged ORF Clone
Tag: TurboGFP
Symbol: Nubp2
Synonyms: D17Wsu11e
Mammalian Cell Selection: Neomycin
Vector: pCMV6-AC-GFP (PS100010)
E. coli Selection: Ampicillin (100 ug/mL)
ORF Nucleotide Sequence: >MG203686 representing NM_011956
Red=Cloning site Blue=ORF Green=Tags(s)

TTTTGTAATACGACTCACTATAGGGCGCCGGGAATTCGTCGACTGGATCCGGTACCGAGGAGATCTGCC
GCC**CGATCGCC**

ATGGAGGCTGCTGCCGGTGAGCGTGCAGAACCCGGGAACCTGGCCGGGTGCGACACATCATCCTTGTTCT
TTTCTGAAAAGGGTGGCCTTGGGAAAAGCACCATCTCCACGGAGTTGGCCCTGGCTCGGCCACCAGGG
CAAGAAGGTGGGAATCCTAGATGTGGACCTGTGCGGTCCAGCATAACCACACATGCTCCGTGCACAAGGC
AAGGCCGTGCACCAGTGTGACAATGGCTGGGTGCCTGTCTTTGTGGATCAGGAGCAGAGCATCTCCCTTA
TGCTGTGGGGTTCCTGTGAAAACCCGTATGAGGCCGTGGTGTGGAGAGGTCCAAGAAACATGCACT
GATAAAGCAGTTTGTGTCTGACGTGGCCTGGGGGAGCTGGATTATCTGGTTGTGGACACACCTCCAGGG
ACCTCTGATGAGCACATGGCCACTATGGAAGCCCTGCGCCCTACAGGCCCTTGGGGCTTTGTAGTCA
CCACACCACAGGCGGTGTCTATTGGGGATGTGAGGCGGGAGCTGACCTTCTGTAAGAAGACTGGGCTGCA
GGTGATAGGGTTCATAGAGAACATGAGCGGCTTACCTGCCCACACTGCGCTGAGTGCACCAATGTCTTC
TCCAGCGGAGTGGGAGGAGCTGGCCGGCTGGCTGGAGTTCCTTTTTAGGCTCTGTCCCCTGGATT
CCCAACTACCAGGAGCTTGGAGGAAGGGCGTGACTTCATCCAGGAATTTCCAAAGCACTGCATATTC
CGCACTCAGTCCATAGCCCAGAGAGTTGTGCACAGGATGTCTGCCCTGTGCTCC

ACGCGTACGCGGCCGCTCGAG - GFP Tag - GTTTAA



[View online »](#)

Protein Sequence: >MG203686 representing NM_011956
Red=Cloning site Green=Tags(s)

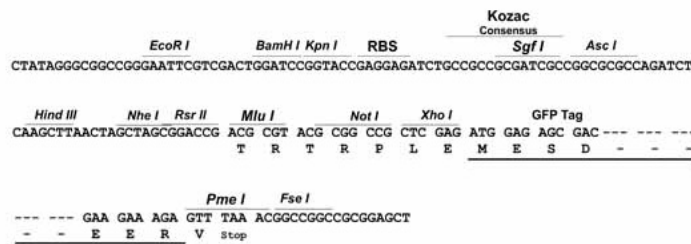
MEAAAGERAEPGNLAGVRHIILVLSGKGGVGKSTISTELALALRHQKKVGILDVLCGPSIPHMLRAQG
 KAVHQCDNGWVPVFDVQEQSISLMSVGFLLLENPDEAVVWRGPKKHALIKQFVSDVAWGQLDYLVDTPPG
 TSDEHMATMEALRPYRPLGALVVTTPQAVSIGDVRRELTFCKTKGLQVIGVIENMSGFTCPHCAECTNVF
 SSGSGEELARLAGVPFLGSVPLDSQLTRSLEEGRDFIQEFPKSTAYSALTSIAQRVVHRMSALCS

TRTRPLE - GFP Tag - V

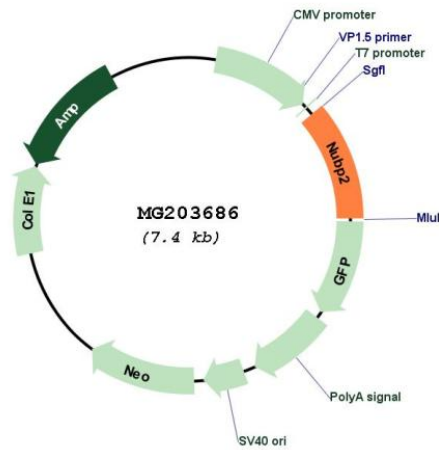
Restriction Sites: SgfI-MluI

Cloning Scheme:

Cloning sites used for ORF Shutting:



Plasmid Map:



ACCN: NM_011956

ORF Size: 825 bp

OTI Disclaimer:	The molecular sequence of this clone aligns with the gene accession number as a point of reference only. However, individual transcript sequences of the same gene can differ through naturally occurring variations (e.g. polymorphisms), each with its own valid existence. This clone is substantially in agreement with the reference, but a complete review of all prevailing variants is recommended prior to use. More info
OTI Annotation:	This clone was engineered to express the complete ORF with an expression tag. Expression varies depending on the nature of the gene.
Components:	The ORF clone is ion-exchange column purified and shipped in a 2D barcoded Matrix tube containing 10ug of transfection-ready, dried plasmid DNA (reconstitute with 100 ul of water).
Reconstitution Method:	<ol style="list-style-type: none">1. Centrifuge at 5,000xg for 5min.2. Carefully open the tube and add 100ul of sterile water to dissolve the DNA.3. Close the tube and incubate for 10 minutes at room temperature.4. Briefly vortex the tube and then do a quick spin (less than 5000xg) to concentrate the liquid at the bottom.5. Store the suspended plasmid at -20°C. The DNA is stable for at least one year from date of shipping when stored at -20°C.
RefSeq:	NM_011956.3
RefSeq Size:	1462 bp
RefSeq ORF:	828 bp
Locus ID:	26426
UniProt ID:	Q9R061
Cytogenetics:	17 12.53 cM
Gene Summary:	Component of the cytosolic iron-sulfur (Fe/S) protein assembly (CIA) machinery. Required for maturation of extramitochondrial Fe-S proteins. The NUBP1-NUBP2 heterotetramer forms a Fe-S scaffold complex, mediating the de novo assembly of an Fe-S cluster and its transfer to target apoproteins. Negatively regulates cilium formation and structure (PubMed:23807208). [UniProtKB/Swiss-Prot Function]