

Product datasheet for **MG203676**

6530403A03Rik (BC021443) Mouse Tagged ORF Clone

Product data:

Product Type: Expression Plasmids
Product Name: 6530403A03Rik (BC021443) Mouse Tagged ORF Clone
Tag: TurboGFP
Symbol: 6530403A03Rik
Synonyms: 1110050F08Rik; 6530403A03Rik; C6orf151
Mammalian Cell Selection: Neomycin
Vector: pCMV6-AC-GFP (PS100010)
E. coli Selection: Ampicillin (100 ug/mL)
ORF Nucleotide Sequence: >MG203676 representing BC021443
 Red=Cloning site Blue=ORF Green=Tags(s)

TTTTGTAATACGACTCACTATAGGGCGGCCGGAATTCGTCGACTGGATCCGGTACCGAGGAGATCTGCC
 GCC**CGATCGCC**

ATGGAGACCGAACCTCCTCTGGAAGAGCGCGTCGGCTCCAGGAGGAGCTGAGCGAGTTTGTGGAGA
 GCTGCTGCCGGACGCTGGAGGAGGTGACGGCGTCCCTGGGATGGAGCCTGGATCAGCTGGACCCCGGGGA
 CGAGGCGGAGGCCGAGGATGAAATCGCCATATGCCTTATGATTCCAATCATCGCATGCCAAATCATCA
 CTAACAAAGCACATGGAATCTTGCAGATTGAGGAACTGGGATATACAAAGAGGAAGAGAATGAAATGT
 ACAATCCTACTTTTTCTATGAAAATTTGAAGATTCCTTCAGTTACTTTGAATAAGGATTCACAGTTCCA
 GATAATTAACAAGCTAGGACTACAGCTGGGAAAGATGGTGATTGTTATAGCCAGAGAATGTATTCTTCA
 GTGCCTGTTGAAGTTCCTCTGAATCACAAACGATCTGTTTGTGACCTCACACAAATGGATCGCCTTGCC
 TGTATGATTTTGTCAATACCAAAAAATCATACACTGAGGTGATCCGGGATGTGATCAAGGTGCACATGGA
 GGAGCTGAGCAGCCACTGGCAGGAAGAGCAGGGGAGAGCAGGAGACGCTGCTGAGAAGAATGAAGAAAGG
 CGGTACGTTTCACTAGATTACCGGCAGTCTGGTGGAAATTTGGATGTTGAAAGTTACAGACATAGAA
 GGGCTCGGAGTAGGAGCCACACAAACGAAAAAGAAATAAAGATAAAAGTTCTGAGTCAAGAAGAAGAAA
 AGAGAGGGATGGAGAAAGACATCATAGTCATAAAAGAAGAAAGCAAAAAATA

ACGCGTACGCGGCCGCTCGAG - GFP Tag - GTTTAA



[View online »](#)

Protein Sequence: >MG203676 representing BC021443
Red=Cloning site Green=Tags(s)

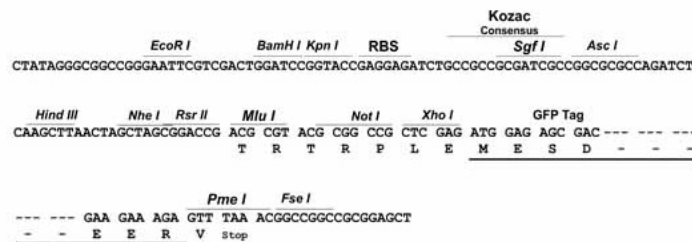
METEPPPLEERRRLQEELSEFVESCRTLEEVTASLGWSLDQLDPGDEAEAEDEIAICPYDSNHRMPKSS
 LTKHMESCRLRKLGYTKEEENEMYNPTFFYENLKIPSVTLNKDSQFQIIKQARTTAGKDGDCYSQRMYS
 VPVEVPLNHKRSVCDLTQMDRLALYDFVITKKSYTEVIRDVIKVHMEELSSHWQEEQGRAGDAAEKNEER
 RSASVDSRQSGGSYLDVESSRHRARRSRSPHKRRRNKDKSSESRRRKERDGERHHSHKRRKQKI

TRTRPLE - GFP Tag - V

Restriction Sites: SgfI-MluI

Cloning Scheme:

Cloning sites used for ORF Shutting:



ACCN: BC021443

ORF Size: 824 bp

OTI Disclaimer: The molecular sequence of this clone aligns with the gene accession number as a point of reference only. However, individual transcript sequences of the same gene can differ through naturally occurring variations (e.g. polymorphisms), each with its own valid existence. This clone is substantially in agreement with the reference, but a complete review of all prevailing variants is recommended prior to use. [More info](#)

OTI Annotation: This clone was engineered to express the complete ORF with an expression tag. Expression varies depending on the nature of the gene.

Components: The ORF clone is ion-exchange column purified and shipped in a 2D barcoded Matrix tube containing 10ug of transfection-ready, dried plasmid DNA (reconstitute with 100 ul of water).

Reconstitution Method:

1. Centrifuge at 5,000xg for 5min.
2. Carefully open the tube and add 100ul of sterile water to dissolve the DNA.
3. Close the tube and incubate for 10 minutes at room temperature.
4. Briefly vortex the tube and then do a quick spin (less than 5000xg) to concentrate the liquid at the bottom.
5. Store the suspended plasmid at -20°C. The DNA is stable for at least one year from date of shipping when stored at -20°C.

RefSeq: [BC021443](#), [AAH21443](#)

RefSeq Size: 987 bp

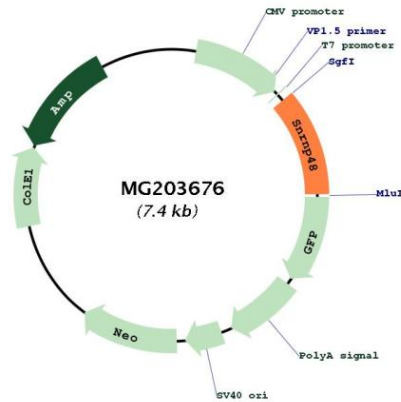
RefSeq ORF: 824 bp

Locus ID: 67797

Cytogenetics: 13 A3.3

Gene Summary: Likely involved in U12-type 5' splice site recognition.[UniProtKB/Swiss-Prot Function]

Product images:



Circular map for MG203676