

Product datasheet for **MG203630**

Cutc (BC026775) Mouse Tagged ORF Clone

Product data:

Product Type:	Expression Plasmids
Product Name:	Cutc (BC026775) Mouse Tagged ORF Clone
Tag:	TurboGFP
Symbol:	Cutc
Synonyms:	2310039I18Rik; AI326282; CGI-32
Mammalian Cell Selection:	Neomycin
Vector:	pCMV6-AC-GFP (PS100010)
E. coli Selection:	Ampicillin (100 ug/mL)
ORF Nucleotide Sequence:	>MG203630 representing BC026775 Red=Cloning site Blue=ORF Green=Tags(s)

TTTTGTAATACGACTCACTATAGGGCGGCCGGAATTCGTCGACTGGATCCGGTACCGAGGAGATCTGCC
GCC**CGATCGCC**

ATGAAGAAAGGGGCTTCTTGCGAGCGGAAACAGGCGTGGATATCGTCGGGGAAGCGGGAGCAGGAAATG
GATTTCTTATGGAAGTGTGTGTAGATTCGGTGGAGTCCGCTGTGAATGCAGAAAGAGGAGGTGCTGGTCCG
GATTGAACTGTGCTCTGGTCTACTGGAGGGAGGAACACCCAGTATGGGTGTTCTTCAAGTAGTAAAA
CAGAGTGTTCAGATCCCAGTGTGTTGTGATGATCCGCCACGCGGAGGCGACTTCTTATACTCCGACCGTG
AAGTTGAGGTGATGAAGGCTGACATTCGCCTTGCCAAGCTTTATGGTGCCGATGGTTTGGTGTGGGGC
ATTGACTGAAGATGGACACATTGACAAAGAGCTATGCTTGTCTCTGTAGCTCTTGCCGCCCTCTGCCG
GTCACTTTCCACAGAGCCTTTGATATGGTTCATGATCCAATGGCAGCTCTGGAGACCCTCTAACCTTAG
GATTTGAACGCGTCTGACCAAGTGGATGCGACAGCTCAGCACTGGAAGGACTGCCTCTAATAAAGCAACT
CATAGACCAGGCAAAAGGAGGATTGTGGTAATGCCAGGAGGTGGAATAACAGATAAAAACTGCAAGG
ATCCTTGAGGTTCCGGTGTACAGAATCCACTGCTCTGCCGATCTCCAGAGACTCAGGAATGAAGT
TTCGAAATTCCTGTGCAATGGGAGCTTCGCTTGTCTCATTGAGAAATTTCTCTAAAGGTAACAGATGT
GACAAAAGTAAGGACTTTGAATGCAATTGCAAAGGACGTCCTAGT

AGCGGACCGACGCGTACGCGGCCGCTCGAG - GFP Tag - GTTTAA



[View online »](#)

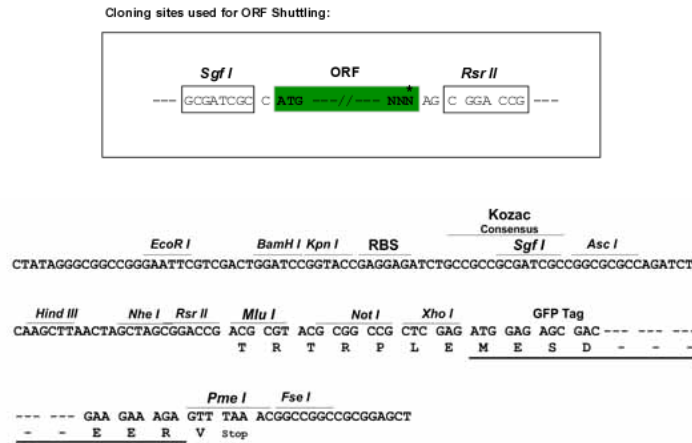
Protein Sequence: >MG203630 representing BC026775
 Red=Cloning site Green=Tags(s)

MKKGASCEKQAWISSGKAGAGNGFLMEVCVDSVESAVNAERGGAGRIELCSGLLEGTTSPMGVLQVVK
 QSVQIPVFVMIRPRGGDFLYSDREVEVMKADIRLAKLYGADGLVFGALTEDGHIDKELCLSLVALCRPLP
 VTFHRAFDMVHDPMAALETLLTLGFERVLTSGCDSSALEGLPLIKQLIDQAKGRIVVMPPGGGITDKNLQR
 ILEGGATEFHCSARSSRDSGMKFRNSSVAMGASLAHSEYSLKVTDVTKVRTLNIAIKDVLV

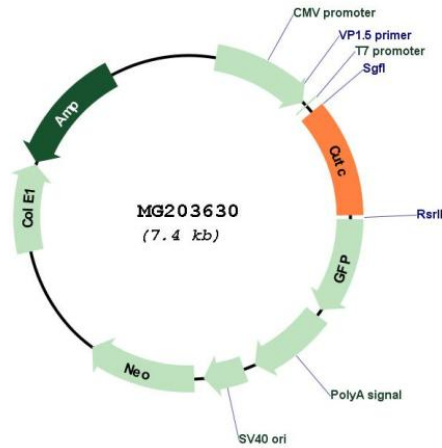
SGPTRRRLE - GFP Tag - V

Restriction Sites: SgfI-RsrII

Cloning Scheme:



Plasmid Map:



ACCN: BC026775

ORF Size: 818 bp

OTI Disclaimer:	The molecular sequence of this clone aligns with the gene accession number as a point of reference only. However, individual transcript sequences of the same gene can differ through naturally occurring variations (e.g. polymorphisms), each with its own valid existence. This clone is substantially in agreement with the reference, but a complete review of all prevailing variants is recommended prior to use. More info
OTI Annotation:	This clone was engineered to express the complete ORF with an expression tag. Expression varies depending on the nature of the gene.
Components:	The ORF clone is ion-exchange column purified and shipped in a 2D barcoded Matrix tube containing 10ug of transfection-ready, dried plasmid DNA (reconstitute with 100 ul of water).
Reconstitution Method:	<ol style="list-style-type: none">1. Centrifuge at 5,000xg for 5min.2. Carefully open the tube and add 100ul of sterile water to dissolve the DNA.3. Close the tube and incubate for 10 minutes at room temperature.4. Briefly vortex the tube and then do a quick spin (less than 5000xg) to concentrate the liquid at the bottom.5. Store the suspended plasmid at -20°C. The DNA is stable for at least one year from date of shipping when stored at -20°C.
RefSeq:	BC026775 , AAH26775
RefSeq Size:	1241 bp
RefSeq ORF:	818 bp
Locus ID:	66388
Cytogenetics:	19 C3
Gene Summary:	May play a role in copper homeostasis. Can bind one Cu(1+) per subunit (By similarity). [UniProtKB/Swiss-Prot Function]