

Product datasheet for **MG203591**

BC030392 Mouse Tagged ORF Clone

Product data:

Product Type: Expression Plasmids
Product Name: BC030392 Mouse Tagged ORF Clone
Tag: TurboGFP
Mammalian Cell Selection: Neomycin
Vector: pCMV6-AC-GFP (PS100010)
E. coli Selection: Ampicillin (100 ug/mL)
ORF Nucleotide Sequence: >MG203591 representing BC030392
 Red=Cloning site Blue=ORF Green=Tags(s)

TTTTGTAATACGACTCACTATAGGGCGGCCGGAATTCGTCGACTGGATCCGGTACCGAGGAGATCTGCC
 GCC**CGATCGCC**

ATGAACTCTTCTCCAGGCTTCATGACTGTGATGCTCCTCATATTCACAATGGCCAGGGGGACTCAGTGA
 CTCAGACGGAAGGTCAAGTGGCCCTCTCAGAAGAGGACTTTCTTACGATACACTGCAACTACTCAGCCTC
 AGGGTACCCAGCTCTGTTCTGGTATGTGCAGTATCCCGGAGAAGGGCCACAGTTCCTCTTTAGAGCCTCA
 AGGGACAAAGAGAAAGGAAGCAGCAGAGGGTTTGAAGCCACATAAATAAAGAAGCCACCTCCTTCCACT
 TGCAGAAAAGCCTCAGTGAAGAGTCAGACTCGGCTGTGTACTACTGTGCTCTGAGGAATTATGGGGCAG
 TGGCAACAAGCTCATCTTTGGAAGTGGCACTCTGCTTTCTGTCAAGCCAAACATCCAGAACCAGAACCT
 GCTGTGTACCAAGTAAAAAGATCCTCGGTCTCAGGACAGCACCTCTGCTGTTCCAGCAGTTCGACTCCC
 AAATCAATGTGCCGAAAACCATGGAATCTGGAACGTTTCATCACTGACAAAAGTGTGCTGGACATGAAAGC
 TATGGATTCCAAGAGCAATGGGGCCATTGCCTGGAGCAACAGACAAGCTTCACCTGCCAAGATATCTTC
 AAAGAGACCAACGCCACCTACCCAGTTCAGACGTTCCCTGTGATGCCACGTTGACCGAGAAAAGCTTTG
 AAACAGATATGAACCTAACTTTCAAACCTGTGAGTTATGGGACTCCGAATCCTCTGCTGAAAGTAGC
 GGGATTTAACCTGCTCATGACGCTGAGGCTGTGGTCCAGT

ACGCGTACGCGGCCGCTCGAG - GFP Tag - GTTTAA

Protein Sequence: >MG203591 representing BC030392
 Red=Cloning site Green=Tags(s)

MNSSPGFMTVMLLIIFTMAQGDSTVQTEGQVALSEEDFLTIHCNYSASGYPALFWYVQYPGEGPQFLFRAS
 RDKEKSSRGFEATYNKEATSFHLQKASVQESDSAVYYCALRNYGGSGNKLIFGTGTLISVKPNIQNPEP
 AVYQLKDRSQDSTLCLFDFDQINVPKTMESGTFITDKTVLDMKAMDSKSNNGAIAWSNQTSTFCQDIF
 KETNATYPSSDVPCDATLTKSFETDMNLNFQNLVSMGLRILLKLVAGFNLLMTRLRLWSS

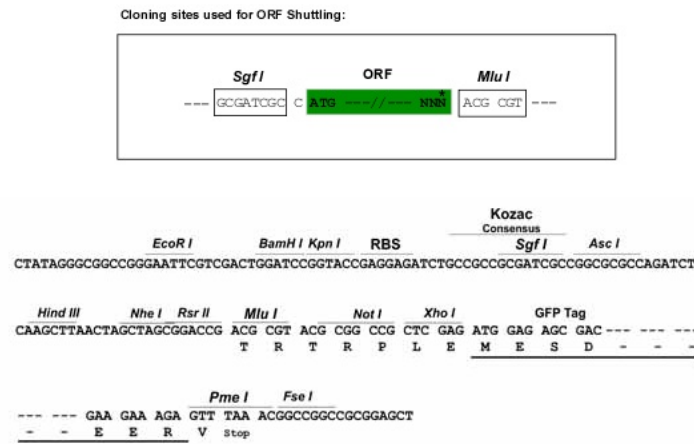
TRTRPLE - GFP Tag - V



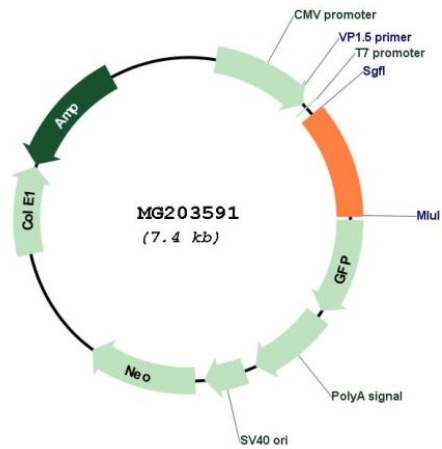
[View online »](#)

Restriction Sites: Sgfl-MluI

Cloning Scheme:



Plasmid Map:



ACCN: BC030392

ORF Size: 812 bp

OTI Disclaimer: The molecular sequence of this clone aligns with the gene accession number as a point of reference only. However, individual transcript sequences of the same gene can differ through naturally occurring variations (e.g. polymorphisms), each with its own valid existence. This clone is substantially in agreement with the reference, but a complete review of all prevailing variants is recommended prior to use. [More info](#)

OTI Annotation: This clone was engineered to express the complete ORF with an expression tag. Expression varies depending on the nature of the gene.

Components:	The ORF clone is ion-exchange column purified and shipped in a 2D barcoded Matrix tube containing 10ug of transfection-ready, dried plasmid DNA (reconstitute with 100 ul of water).
Reconstitution Method:	<ol style="list-style-type: none">1. Centrifuge at 5,000xg for 5min.2. Carefully open the tube and add 100ul of sterile water to dissolve the DNA.3. Close the tube and incubate for 10 minutes at room temperature.4. Briefly vortex the tube and then do a quick spin (less than 5000xg) to concentrate the liquid at the bottom.5. Store the suspended plasmid at -20°C. The DNA is stable for at least one year from date of shipping when stored at -20°C.
RefSeq:	<u>BC030392</u>
RefSeq Size:	1340 bp
RefSeq ORF:	812 bp