

Product datasheet for **MG203588**

Igsf5 (NM_028078) Mouse Tagged ORF Clone

Product data:

Product Type: Expression Plasmids
Product Name: Igsf5 (NM_028078) Mouse Tagged ORF Clone
Tag: TurboGFP
Symbol: Igsf5
Synonyms: 2010003D20Rik; Jam4; JCAM
Mammalian Cell Selection: Neomycin
Vector: pCMV6-AC-GFP (PS100010)
E. coli Selection: Ampicillin (100 ug/mL)
ORF Nucleotide Sequence: >MG203588 representing NM_028078
 Red=Cloning site Blue=ORF Green=Tags(s)

TTTTGTAATACGACTCACTATAGGGCGGCCGGAATTCGTCGACTGGATCCGGTACCGAGGAGATCTGCC
 GCC**CGATCGCC**

ATGGAGGGCAGCTGGAGAGATGTCCTGGCTGTGCTGGTCATCCTGGCTCAGCTGACAGCTTCCGGATCCA
 GTTATCAGATCATAGAAGGTCCTCAGAATGTAACAGTCCCTAAAGGACTCAGAGGCTCACTTCAACTGCAC
 CGTGACTCACGGCTGGAAGCTTCTCATGTGGACTCTTAACCAAATGGTGGTGCTGAGTCTCACACCCAA
 GGACCCATCATCACAACAACCGCTTACCTATGCCAGTTACAACAGCACTGACAGCTTCATCTCGGAGT
 TGATCATCCATGATGTGCAGCCCAGTGACTCGGGATCCGTGCAATGCAGCCTGCAGAACAGCCATGGGT
 TGGATCTGCCTTCTCAGTGCAAGACAGTATTGGAGAGGAAGGCCAGCACTGCCGACCTGGGCCATC
 ATCCTGCTGGCAGTGGCCTTTCTTCTGCTCTTGATCCTGATCATTGTTTTGATTATAATATTCTGTTGCT
 GTTGTGCCTCCAGGAGAGAAAAGGAAGAATCTACTTATCAAAATGAAATAAGGAAATCTGCAAAACATGAG
 GACAAACAAGCAGATCCGGAGACAAAGTTAAAAAGTGGAAAGGAAAACACTACGGGTACAGTTCGGATGAG
 GCAAAGGCTGCACAGACTGCATCTCCTCCTAAATCTGCTGAAGTCAGCCTTCCAGAAAAACGCAGCA
 GTAGCCTTCTTATCAGGAACCAATAACATCAGCCCGGTCCAGCAACTCATCCACGGGTTTCTTTGA
 CATCGCCAGTCCCTCAGAAGGTGAGAAATGTGACTTTAGT

ACGCGTACGCGGCCGCTCGAG - GFP Tag - GTTTAA



[View online »](#)

Protein Sequence: >MG203588 representing NM_028078
 Red=Cloning site Green=Tags(s)

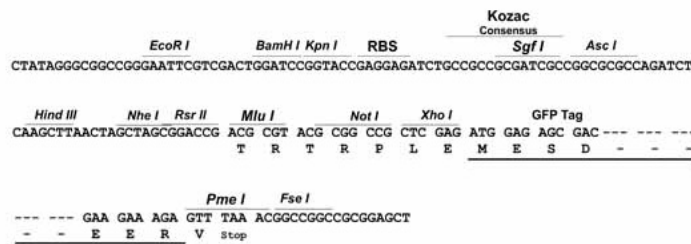
MEGSRDVLAVLVILAQLTASGSSYQIIEGPQNVTVLKDSEAHFNCTVTHGWKLLMWTLNQMVLVSLTTO
 GPIITNNRFTYASYNSTDSFISELIIHDVQPSDSGVSQCSLQNSHGFGSAFLSVQDSIGEEGPALPTWAI
 ILLAVAFSLLLILIIIVLIIIFCCCCASRREKEESTYQNEIRKSANMRTNKADPETKLKSGKENYGYSSDE
 AKAAQTASLPPKSAEVSLEPKRSSSLPYQELNKHQPGPATHPRVSFDIASPOKVRNVTLV

TRTRPLE - GFP Tag - V

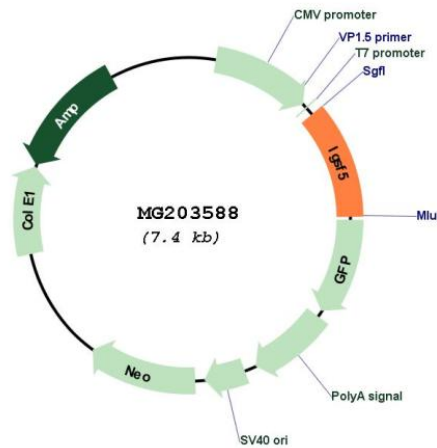
Restriction Sites: SgfI-MluI

Cloning Scheme:

Cloning sites used for ORF Shutting:



Plasmid Map:



ACCN: NM_028078

ORF Size: 810 bp

OTI Disclaimer:	The molecular sequence of this clone aligns with the gene accession number as a point of reference only. However, individual transcript sequences of the same gene can differ through naturally occurring variations (e.g. polymorphisms), each with its own valid existence. This clone is substantially in agreement with the reference, but a complete review of all prevailing variants is recommended prior to use. More info
OTI Annotation:	This clone was engineered to express the complete ORF with an expression tag. Expression varies depending on the nature of the gene.
Components:	The ORF clone is ion-exchange column purified and shipped in a 2D barcoded Matrix tube containing 10ug of transfection-ready, dried plasmid DNA (reconstitute with 100 ul of water).
Reconstitution Method:	<ol style="list-style-type: none">1. Centrifuge at 5,000xg for 5min.2. Carefully open the tube and add 100ul of sterile water to dissolve the DNA.3. Close the tube and incubate for 10 minutes at room temperature.4. Briefly vortex the tube and then do a quick spin (less than 5000xg) to concentrate the liquid at the bottom.5. Store the suspended plasmid at -20°C. The DNA is stable for at least one year from date of shipping when stored at -20°C.
RefSeq:	NM_028078.3 , NP_082354.1
RefSeq Size:	1552 bp
RefSeq ORF:	813 bp
Locus ID:	72058
UniProt ID:	Q7TSN7
Cytogenetics:	16 C4
Gene Summary:	Provides, together with MAGI1, an adhesion machinery at tight junctions, which may regulate the permeability of kidney glomerulus and small intestinal epithelial cells. Mediates calcium-independent homophilic cell adhesion. In testis, it may function as a cell adhesion molecule rather than a tight-junction protein. It may participate in the adhesion between spermatogonia-spermatogonia, spermatogonia-Sertoli cells, and Sertoli cells-Sertoli cells. [UniProtKB/Swiss-Prot Function]