

## Product datasheet for **MG203561**

### Capns1 (NM\_009795) Mouse Tagged ORF Clone

#### Product data:

Product Type:	Expression Plasmids
Product Name:	Capns1 (NM_009795) Mouse Tagged ORF Clone
Tag:	TurboGFP
Symbol:	Capns1
Synonyms:	Capa-4; Capa4; Capn4; Cdps; Css1; D7Erttd146e
Mammalian Cell Selection:	Neomycin
Vector:	pCMV6-AC-GFP (PS100010)
E. coli Selection:	Ampicillin (100 ug/mL)
ORF Nucleotide Sequence:	>MG203561 representing NM_009795 Red=Cloning site Blue=ORF Green=Tags(s)

TTTTGTAATACGACTCACTATAGGGCGGCCGGAATTCGTCGACTGGATCCGGTACCGAGGAGATCTGCC  
GCC**CGATCGCC**

ATGTTCTTGTTGAATTCGTTCTTGAAGGGCGGCGGTGGCGGTGGGGGAGGCGGGGTCTGGCGGGGGCC  
TGGGGAATGTGCTCGGAGGCCTGATCAGCGGAGCTGCTGGCGGCGGCGGCGGTGGCGGTGGAGGCATGGG  
ACTGGGAGGAGGTGGCGGAGGCGGTGGAAGTCCATGCGCATCCTGGCGGAGTCATTAGCGCCATCAGC  
GAGGCTGCTGCGCAGTACAACCCGGAGCCTCCGCTCCACGTAGTCATTACTCCAATATTGAGGCCAACG  
AGAGTGAAGAAGTCCGTCAGTTCAGGAACTTTTGTCCAGCTGGCTGGAGACGACATGGAGGTCAGCGC  
CACAGAACTCATGAATATCCTCAACAAGGTCGTGACCCGACCCGGATCTGAAAATGATGGTTTTGGC  
ATTGACACTTGTGCGGAGCATGGTGGCCGTCATGGATAGCGACACCACAGGCAAGCTGGGCTTTGAGGAGT  
TCAAATACCTCTGGAACAACATTAAGTGGCAGGCTATATACAAACGCTTTGATACTGACCGATCAGG  
GACTATCGGTAGCCATGAACTTCCAGGGGCTTTGAGGCAGCAGGATCCACCTGAATGAGCATCTCTAC  
AGCATGATCATCCGGCGCTACGCAGATGAGAGCGGGAACATGGATTTGATAACTTCATCAGCTGCTTGG  
TCAGGCTAGATGCCATGTTCCGCGCTTCAAATCTCTTGACAAAAATGGCACCAGGACAGATCCAAGTGAA  
CATCCAGGAGTGGCTGCAGCTGACTATGTATTCC

**ACGCGT**ACGCGGCCGCTCGAG - GFP Tag - GTTTAA



[View online »](#)

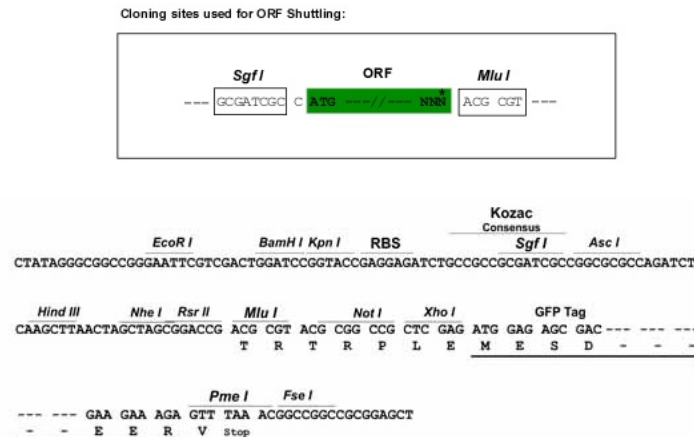
**Protein Sequence:** >MG203561 representing NM\_009795  
 Red=Cloning site Green=Tags(s)

MFLVNSFLKGGGGGGGGGLGGGLGNVLGGLISGAAGGGGGGGGMLGGGGGGGTAMRILGGVIS AIS  
 EAAAQYNPEPPPPRSHYSNIEANESEEVQRKLFVQLAGDDMEVSATELMNILNKVVTRHPDLKTDGFG  
 IDTCRSMVAVMDSDTTGKLGFEFKYLWNNIKKWQAIYKRFDTRSGTIGSHELPGAFEAAGFHLNEHLY  
 SMIRRVADESGNMFDFNFISCLVRLDAMFRAFKSLDKNGTGQIQVNIQEWLQLTMYS

TRTRPLE - GFP Tag - V

**Restriction Sites:** Sgfl-Mlul

**Cloning Scheme:**



**ACCN:** NM\_009795

**ORF Size:** 804 bp

**OTI Disclaimer:** The molecular sequence of this clone aligns with the gene accession number as a point of reference only. However, individual transcript sequences of the same gene can differ through naturally occurring variations (e.g. polymorphisms), each with its own valid existence. This clone is substantially in agreement with the reference, but a complete review of all prevailing variants is recommended prior to use. [More info](#)

**OTI Annotation:** This clone was engineered to express the complete ORF with an expression tag. Expression varies depending on the nature of the gene.

**Components:** The ORF clone is ion-exchange column purified and shipped in a 2D barcoded Matrix tube containing 10ug of transfection-ready, dried plasmid DNA (reconstitute with 100 ul of water).

**Reconstitution Method:**

1. Centrifuge at 5,000xg for 5min.
2. Carefully open the tube and add 100ul of sterile water to dissolve the DNA.
3. Close the tube and incubate for 10 minutes at room temperature.
4. Briefly vortex the tube and then do a quick spin (less than 5000xg) to concentrate the liquid at the bottom.
5. Store the suspended plasmid at -20°C. The DNA is stable for at least one year from date of shipping when stored at -20°C.

**RefSeq:** [NM\\_009795.4](#)

**RefSeq Size:** 1462 bp

**RefSeq ORF:** 807 bp

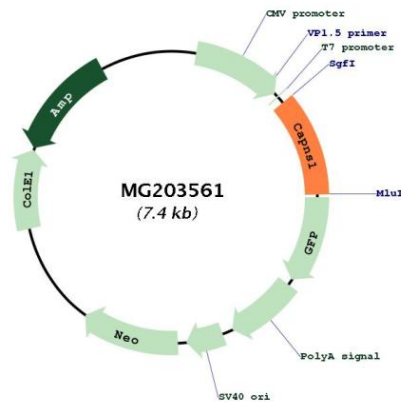
**Locus ID:** 12336

**UniProt ID:** [O88456](#)

**Cytogenetics:** 7 17.31 cM

**Gene Summary:** Regulatory subunit of the calcium-regulated non-lysosomal thiol-protease which catalyzes limited proteolysis of substrates involved in cytoskeletal remodeling and signal transduction. [UniProtKB/Swiss-Prot Function]

**Product images:**



Circular map for MG203561