

## Product datasheet for **MG203500**

### **Apoa1 (NM\_009692) Mouse Tagged ORF Clone**

#### Product data:

Product Type:	Expression Plasmids
Product Name:	Apoa1 (NM_009692) Mouse Tagged ORF Clone
Tag:	TurboGFP
Symbol:	Apoa1
Synonyms:	Al; Alp-1; Ap; apo-Al; Apoa-1; apoA-I; Brp-; Brp-14; Ltw-; Ltw-1; Lvtw; Lvtw-1; Se; Sep; Sep-1; Sep-2; Sep2
Mammalian Cell Selection:	Neomycin
Vector:	pCMV6-AC-GFP (PS100010)
E. coli Selection:	Ampicillin (100 ug/mL)
ORF Nucleotide Sequence:	>MG203500 representing NM_009692 Red=Cloning site Blue=ORF Green=Tags(s)

TTTTGTAATACGACTCACTATAGGGCGGCCGGAATTCGTCGACTGGATCCGGTACCGAGGAGATCTGCC  
GCC**GCGATCGCC**

ATGAAAGCTGTGGTGCTGGCCGTGGCTCTGGTCTTCTGACAGGGAGCCAGGCTTGGCACGTATGGCAGC  
AAGATGAACCCAGTCCAATGGGACAAAGTGAAGGATTCGCTAATGTGTATGTGGATGCGGTCAAAGA  
CAGCGGCAGAGACTATGTGTCCAGTTTGAATCCTCCTCCTTGGGCCAACAGCTGAACCTGAATCTCCTG  
GAAAACCTGGGACACTCTGGGTTCAACCGTTAGTCAGCTGCAGGAACGGCTGGGCCATTGACTCGGGACT  
TCTGGGATAACCTGGAGAAAGAAACAGATTGGGTGAGACAGGAGATGAACAAGGACCTAGAGGAAGTGAA  
ACAGAAGGTGCAGCCCTACCTGGACGAATTCAGAAGAAATGGAAAGAGGATGTGGAGCTCTACCGCCAG  
AAGGTGGCGCCTCTGGGCGCCGAGCTGCAGGAGAGCGCGCCAGAAGCTGCAGGAGCTGCAAGGGAGAC  
TGTCCCTGTGGCTGAGGAATTCGCGACCGCATGCGCACACAGTAGACTCTCTGCGCACACAGCTAGC  
GCCCCACAGCGAACAGATGCGCGAGAGCCTGGCCAGCGCCTGGCTGAGCTCAAGAGCAACCCCTACCTTG  
AACGAGTACCACACCAGGGCCAAAACCCACCTGAAGACACTTGGCGAGAAAGCCAGACCTGCGCTGGAGG  
ACCTGCGCCATAGTCTGATGCCCATGCTGGAGACGCTTAAGACCAAAGCCAGAGTGTGATCGACAAGGC  
CAGCGAGACTCTGACTGCCAG

**ACGCGT**ACGCGGCCGCTCGAG - GFP Tag - GTTTAA



[View online »](#)

**Protein Sequence:** >MG203500 representing NM\_009692  
 Red=Cloning site Green=Tags(s)

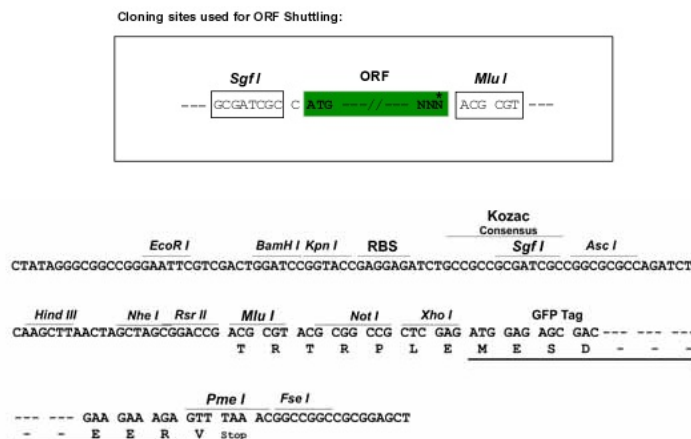
MKAVVLAVALVFLTGSQAWHVWQQDEPQSQWDKVKDFANVYVDAVKDSGRDYVSQFESSLGQQLNLL  
 ENWDTLGSTVSQLQERLGPLTRDFWNLKEDTDWVRQEMNKDLEEYKQKVPYLDLDEFQKKWKEDVELYRQ  
 KVAPLGAELQESARQKLQELQGRSPVAEEFRDRMRTHVDSLRTQLAPHSEQMRESLAQRRLAELKSNPTL  
 NEYHTRAKTHLKTLEKARPALEDLRHSLMPMLETLKTKAQSVIDKASETLTAQ

TRTRPLE - GFP Tag - V

**Chromatograms:** [https://cdn.origene.com/chromatograms/ja2741\\_b03.zip](https://cdn.origene.com/chromatograms/ja2741_b03.zip)

**Restriction Sites:** SgfI-MluI

**Cloning Scheme:**



**ACCN:** NM\_009692

**ORF Size:** 792 bp

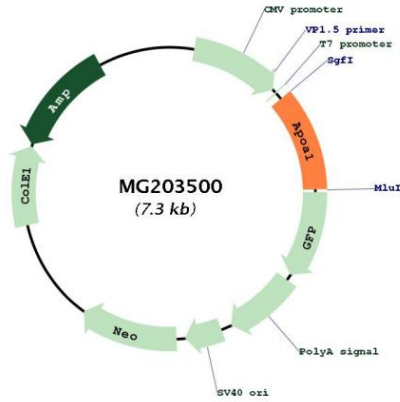
**OTI Disclaimer:** Due to the inherent nature of this plasmid, standard methods to replicate additional amounts of DNA in E. coli are highly likely to result in mutations and/or rearrangements. Therefore, OriGene does not guarantee the capability to replicate this plasmid DNA. Additional amounts of DNA can be purchased from OriGene with batch-specific, full-sequence verification at a reduced cost. Please contact our customer care team at [custsupport@origene.com](mailto:custsupport@origene.com) or by calling 301.340.3188 option 3 for pricing and delivery.

The molecular sequence of this clone aligns with the gene accession number as a point of reference only. However, individual transcript sequences of the same gene can differ through naturally occurring variations (e.g. polymorphisms), each with its own valid existence. This clone is substantially in agreement with the reference, but a complete review of all prevailing variants is recommended prior to use. [More info](#)

**OTI Annotation:** This clone was engineered to express the complete ORF with an expression tag. Expression varies depending on the nature of the gene.

<b>Components:</b>	The ORF clone is ion-exchange column purified and shipped in a 2D barcoded Matrix tube containing 10ug of transfection-ready, dried plasmid DNA (reconstitute with 100 ul of water).
<b>Reconstitution Method:</b>	<ol style="list-style-type: none"><li>1. Centrifuge at 5,000xg for 5min.</li><li>2. Carefully open the tube and add 100ul of sterile water to dissolve the DNA.</li><li>3. Close the tube and incubate for 10 minutes at room temperature.</li><li>4. Briefly vortex the tube and then do a quick spin (less than 5000xg) to concentrate the liquid at the bottom.</li><li>5. Store the suspended plasmid at -20°C. The DNA is stable for at least one year from date of shipping when stored at -20°C.</li></ol>
<b>RefSeq:</b>	<u>NM_009692.2</u>
<b>RefSeq Size:</b>	988 bp
<b>RefSeq ORF:</b>	795 bp
<b>Locus ID:</b>	11806
<b>UniProt ID:</b>	<u>Q00623</u>
<b>Cytogenetics:</b>	9 25.36 cM
<b>Gene Summary:</b>	<p>This gene encodes a preproprotein that is proteolytically cleaved to yield a signal peptide and a proprotein that is subsequently processed to generate the active mature peptide. The encoded protein is the major protein component of plasma high density lipoprotein (HDL). This protein facilitates the removal of cholesterol and other fats from tissues by transporting them to the liver for excretion. This protein is a cofactor for lecithin cholesterolacyltransferase, an enzyme that catalyzes the conversion of free cholesterol to cholesteryl esters. Mutations in this gene in humans causes familial HDL deficiency, Tangier disease and familial visceral amyloidosis. Similar clinical features are exhibited by mice with mutations in this gene. This gene is clustered with three other apolipoprotein genes on chromosome 9. [provided by RefSeq, Dec 2013]</p>

Product images:



Circular map for MG203500