

Product datasheet for **MG203492**

Muc10 (BC042902) Mouse Tagged ORF Clone

Product data:

Product Type:	Expression Plasmids
Product Name:	Muc10 (BC042902) Mouse Tagged ORF Clone
Tag:	TurboGFP
Symbol:	Muc10
Synonyms:	Muc10
Mammalian Cell Selection:	Neomycin
Vector:	pCMV6-AC-GFP (PS100010)
E. coli Selection:	Ampicillin (100 ug/mL)
ORF Nucleotide Sequence:	>MG203492 representing BC042902 Red=Cloning site Blue=ORF Green=Tags(s)

TTTTGTAATACGACTCACTATAGGGCGGCCGGAATTCGTCGACTGGATCCGGTACCGAGGAGATCTGCC
GCC**CGATCGCC**

ATGAAAAATGAAATGTTTCATCTTGGCCTGTTGGCTCTTACTTCATATTTTCATGCCTGGTGAAAGTCATC
ACAAGTCAAGAAGTTCACAATTCCTGTGAGAAAATATCTAGAAGACCCAAGATATCCAAGATATCCAAG
ACCACATTATTCCTATGGTTTCATTCCAAGCTCTCAAAGTTTCCAAAAGACAATCAATGGTATAAGATG
TGCCCTCCAGGAACCTTAATGCTGATCAGTCGCCGTTCTCCTAAATTTCTATGCATTCTAAAAGAC
AGATTATCTGTGATAAAACGAAACCAAATGCAACCACACCAGCACCTACCACCAAACCTACCACAAATGC
AACTACACCAGCACCAACCAACAGAATACCACAAATGCAATCACACCAGCACCGACCCCAACCTACC
ACAAATGCAACCACACCAGCACCAACCAACAGAATACCACAAATGCAACCACACCAGCACCGACCCCTCA
AACCTACCACAAATGTAACCACACCAGCAACAACCACAAATGTAACCACACCAGCAACAACCACAAATGC
AACCACACCAGCAACAACCACAAATGCAACCACACCAGCAACAACCACCAATCTACAACAAAAGAACCT
ACTACTCACCTAAGCCTAGCACCTCTACAGCCATACCTACAACAATAAGTCTGCAAATAGTACTTCTCT
CTACTACAATACTACTACCATCCAAACTACAGCTCCAACATTTGCGGAAGTGTTTTGGAAGTCTTTTCA
GCAGATCTTTAGGTTAAAGAAA

ACGCGTACGCGGCCGCTCGAG - GFP Tag - GTTTAA



[View online »](#)

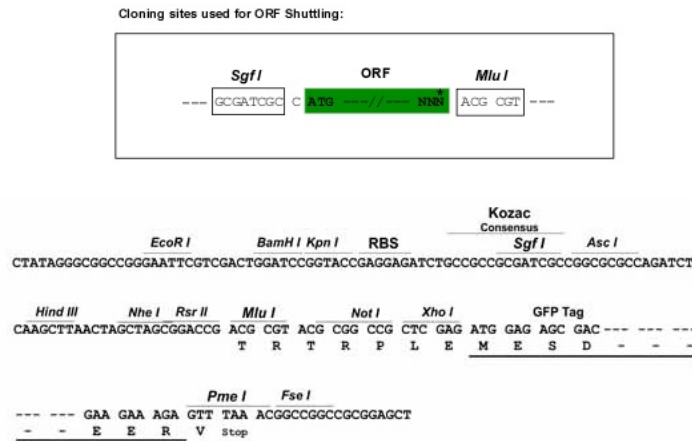
Protein Sequence: >MG203492 representing BC042902
 Red=Cloning site Green=Tags(s)

MKNEMFILGLLALTSYFMPGESHHKSRSSQFPVRKYLEDPYPRYPYRPHYSYGFIPSSPKFKPDNQWYKM
 CPPGTTMLISRRSPKFLCIPKRQIISDKTKPNATTPAPTTPKPTTNATTPAPTNRITTTNATTPAPT
 TNATTPAPTNRITTTNATTPAPTLKPTTNVTTTPATTTNVTTTPATTTNATTPATTTNATTPATTTKSTTKEP
 TTSPKPSTSTAIPTTTKSANSTSTTTSTTIQTTAPTFAEVFWKFFQIFRLKK

TRTRPLE - GFP Tag - V

Restriction Sites: SgfI-MluI

Cloning Scheme:



ACCN: BC042902

ORF Size: 792 bp

OTI Disclaimer: The molecular sequence of this clone aligns with the gene accession number as a point of reference only. However, individual transcript sequences of the same gene can differ through naturally occurring variations (e.g. polymorphisms), each with its own valid existence. This clone is substantially in agreement with the reference, but a complete review of all prevailing variants is recommended prior to use. [More info](#)

OTI Annotation: This clone was engineered to express the complete ORF with an expression tag. Expression varies depending on the nature of the gene.

Components: The ORF clone is ion-exchange column purified and shipped in a 2D barcoded Matrix tube containing 10ug of transfection-ready, dried plasmid DNA (reconstitute with 100 ul of water).

Reconstitution Method:

1. Centrifuge at 5,000xg for 5min.
2. Carefully open the tube and add 100ul of sterile water to dissolve the DNA.
3. Close the tube and incubate for 10 minutes at room temperature.
4. Briefly vortex the tube and then do a quick spin (less than 5000xg) to concentrate the liquid at the bottom.
5. Store the suspended plasmid at -20°C. The DNA is stable for at least one year from date of shipping when stored at -20°C.

RefSeq: [BC042902.1](#)

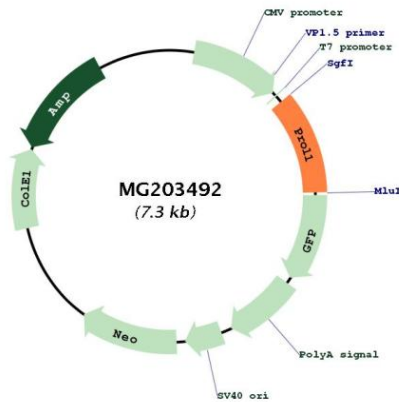
RefSeq Size: 1030 bp

RefSeq ORF: 794 bp

Locus ID: 17830

Cytogenetics: 5 E1

Product images:



Circular map for MG203492